


Luppitt Packet
November 2022





**SUCCESSFULLY SELLING COUNTRY
AND VILLAGE PROPERTY IN YOUR PARISH**

If you would like any advice, please contact your local Devon team:

HONITON 01404 42456 devon@humberts.com	humberts.com MOVING YOU SINCE 1842
--	--

**Come along to an informal
New Year's Eve
Get Together
At Luppitt Village Hall Hub Pub
Saturday 31st December from 8pm
Bring your own food**

THE LUPPITT PACKET

Welcome to the November edition of the Luppitt Packet. November never seems to settle, as if it has some identity crisis. It's weather is so changeable, the two seasons of autumn and winter battling. However there is much to look forward to in Luppitt this month from an entertainments perspective, and also that time of year that we officially remember the fallen in many conflicts past and present. Thank you for your support and contributions to this edition, and if you would like to contribute to future editions, please contact us at editors@luppittpacket.co.uk

We are very fortunate to have so many wonderful artists in Luppitt. This months Cover Art submitted by Marion Chown.

Trevor, Martin & Luppitt packet team

CONTENTS

What's On.....	4-11	Advertisements	31-44
Features	12-24	Parish Council	45-49
Bulletin Board	25	Directory	50
St Mary's Church.....	26		

Serving: Luppitt, Wick, Beacon, Shaugh and Shelvin

**COPY DATE FOR THE DECEMBER/JANUARY ISSUE IS 19TH
NOVEMBER 2022**

editors@luppittpacket.co.uk

Editors & Adverts	Trevor Bevan & Martin Hemsley	
Treasurer	John Hayes	01404 890114
Distribution	Mandy Riley	07817517425

!THE LUPPITT PACKET ONLINE!

We have created a Luppitt Packet website www.luppittpacket.co.uk, so that from time-to-time we can share more colour photos and background.

Our archive of PDF copies of The Packet dating from 2010 up to the current edition will continue on the website www.luppitt.net, which is hosted by Peter Sage, and contains a wealth of information about Luppitt – its history, people, photos, family trees etc.

DISCLAIMER

The Editorial Team take no responsibility for the information given or views expressed in the Luppitt Packet and will not be liable for any direct, indirect or consequential loss arising from the use of the information and advertisements contained in this publication. Although every endeavour is made to meet the requirements of advertisers, no responsibility can be accepted for failure to insert an advertisement upon any specified date. The Editorial Team reserve the right to refuse or amend any advertisement without assigning any reason.

What's on

November

Tues. 1 Luppitt Parish Council meeting 8:00pm
Wed 9 Luppitt Neighbourhood Plan Referendum Q&A's Village hall 7-9pm
Sat 12 Concert for Ukraine, Concert commences at 7:00pm
Fri 18 Quiz Night 7:30 for 8:00pm
Sat 19 Luppitt Neighbourhood Plan Referendum Q&A's Village hall 10am-12
Wed 23 Mobile Library Mountstephens 10:45am -11:15am
Thur 24 Luppitt Neighbourhood Plan Referendum

REGULAR EVENTS IN THE VILLAGE HALL

Village Hub Pub	7:30pm every Wednesday and Friday
Bowls	7.30pm Mondays
Poppy club	10:30 to 12:30 every Tuesday Village hall
Friday Coffee / Market	11am until 1pm
Sat 26 th Coffee / Market	11am until 1pm

Luppitt Entertainments Committee Events

Friday 18th November 7:30 for 8:00pm - Quiz Night

Saturday 17th December 7:00 for 7:30pm – Christmas Party

**Saturday 31st December 8:00pm – Come along and see in the
New Year at the Hub Pub**

To all junior artists of Luppitt



Design our **Christmas** front cover

Theme:

"Christmas in Luppitt"

Criteria:

Any child living in Luppitt

Age up to 16

Drawn or painted b/w or colour on A4/A5 card /
paper

To be submitted by November 7th to one of our
editorial team. Name and age on back of entry.

A prize of a £25 voucher for winning entry.

Entries will be judged by two local artists. All
entries will be displayed in Village Hall.

Good Luck

Please Note: All pictures to be in portrait orientation like the packet cover



Raising funds for Upottery Football Club



UPOTTERY FOOTBALL CLUB

WINE & WISDOM

£6 PER PERSON - MAX 6 PEOPLE PER TEAM
INCLUDES FOOD & A BOTTLE OF WINE PER TABLE

FRIDAY 11TH NOVEMBER 2022
7.30PM FOR 8.00PM START,
UPOTTERY VILLAGE HALL

R.S.V.P to Phil Joyce or Kayla Jones by 4th November 2022

Email: philipjoyce53@gmail.com 07835 334549 or
michaelajones27@gmail.com 07564 337736



ADVANCE NOTICE

THE LUPPITT PLAYERS

will be performing a pantomime

"ROBIN HOOD"

2nd, 3rd & 4th FEBRUARY 2023

Luppitt Village Hall

Box Office Enquiries: Telephone: 891268

All profits will support local charities

More info in December Packet



CONCERT FOR UKRAINE

Luppitt Village Hall
Saturday 12th November

A Fabulous Evening of Folk, Folk Rock, Ceilidh and Classical Music

First on stage will be mezzo-soprano **Iryna Ilivtska**. Iryna studied opera at the Conservatory of Classical Music and Jazz in Zurich before moving on to the Academy of Music in Milan.

Also performing in the first half will be Luppitt musicians **Robin Nancarrow** and **Sue Wilson**, busking duo 'Blue Sky', plus songs from **Becky Cottrell-Jury** from Cornwall.

The tempo will rise dramatically in the second half when 'The Walnuts' take over the stage. Everyone in the audience is guaranteed to be foot-tapping and entertained by this five-strong Ceilidh rock band.

Founded by Scotsman Davie McGirr, band members include TV presenter, Matt Allwright (from Rogue Traders), and broadcaster Fergus Muirhead.

All proceeds to the Red Cross Ukraine Appeal

Tickets will go on sale mid-September at £10
(as this is a fund raiser, over 18's only please)

To reserve tickets please call:

Christine Kalisch – 07592 122884 christinejarman25@gmail.com
or 4YouFromMe Honiton High St 01404 43300 www.4youfromme.co.uk

Doors, licensed bar and coffee bar will open at 6.00pm
Performance starts at 7.00pm

If you would like to support but cannot attend the concert, visit:
<https://www.kindlink.com/fundraising/british-red-cross/5417>

**Some of the local Luppitt performers in the Ukraine concert
November 12th at 7pm**



David Kalisch

Blue Sky



Roger Hicks



Sue Wilson



Robin Nancarrow



Quiz Night

Luppitt Village Hall

Friday 18th November

7:30 for 8:00pm



Bar and Raffle

Teams of 6

£6 per head including Supper

Please note: Cash Only

Names to Pat Bussey: 892720

Or email pat.bussey27@gmail.com

By 11th November please

Luppitt Packet coffee morning at Village Hall

On December 3rd at 11 o'clock til 1 o'clock

Christmas Raffle

Mince pies etc.

Reveal of the Christmas front cover, by children of Luppitt, for the December Luppitt Packet. Plus prize giving for the winner. A small gift + certificate for all children who take part.



Luppitt Childrens Christmas Party

Saturday 10th December 2022

Village Hall 11-1 o'clock

Dancing, singing and games with

Strictly Dizzy Dancing

Hot food served

Visit from Father Christmas

Text or email Sarah on

07594701338

sarahchown@hotmail.com



Fun, informal & relaxed carol singing performances

Sunday 4 December

3pm Christingle Service at Luppitt Village Hall

Friday 16 December

8.30pm The Hub Pub at Luppitt Village Hall

Sunday 18 December

1pm The York Inn, Churchingford

2.30pm The Sidmouth Arms, Upottery

6.30pm Carols by Candlelight at St Mary's Church, Luppitt

Rehearsals 4-5pm on Sundays from Sunday 23 October

For more information email luppittchristmaschoir@gmail.com

or leave a message on 01404 891140

Luppitt Christmas Party

**Three Course Meal with
Disco, Bar and Raffle**

**Luppitt Village Hall
Saturday 17th December
7:00 for 7:30pm**

**Tickets £25 per head, Cash only please
From Tracey Rosewell:
Email dolishfarm@btinternet.com
or phone 891218 evenings
By 10th December**

*** Tables of 8 – 10 ***

*** Places not confirmed until paid for ***

*** Please specify any dietary requirements ***



THE QUEUE TO END ALL QUEUES!

Finally, we had made it, we faced each other, squeezed hands, turned and began to mount the stairs

13 hours earlier we had rushed into Southwark Park convinced we were ahead of the game by arriving late evening and prepared to walk through the night, how many others would be willing to do that? As it happens it appeared to be thousands !! Urgency was ignited by reports of closing the queue as monumental numbers of mourners began flocking to the banks of the Thames determined to wait in line till they dropped or preferably made it to Westminster.

We were well prepared with layers of clothes and a tuck bag full of protein bars. Water was kept to a minimum, fears of lack of facilities won over the importance of hydration. In spite of the crowds, all were good natured and up for the challenge. Blankets were given out by kindly charity workers and 100's of jolly volunteers corralled us into an orderly queue, snaking back and forth across the park, zone 3, zone 2 and zone 1 and then finally onto the street and down towards the river. Time ticking, 3 hours already and we had not officially made the start of the queue. A jolly, burly band of policemen handed out the precious wristband, a royal purple for us. They were encouraging and smiley and enthused with

confidence we strode on.

We set off at a gallop, warm and energised, through ink black, quickly cooling streets. It was 1.30 a.m. and dozens of volunteers lined the streets making sure we followed the right roads to the embankment. Once at the river we were mesmerised by the beauty of the scene. Lights shone low along the shoreline like sparkling strings of pearls and Tower Bridge and the Shard were illuminated in deep purple. Every now and then a coffee shop or newsagent would be open and people would rush to buy a coffee, a chocolate bar or just stop for a moment to rest a limb, add a jumper or message a friend. It was getting colder now and we too added more layers, voices were hushed and the atmosphere more subdued. Then we were standing still, not moving, for about an hour with no knowledge of why or when we might move again. It was about 3.00 a.m., we felt sleepy and our feet burned and our legs ached, but with no hope or desire to sit down and even less to think of giving up! Suddenly we were off again, slowly at first, but then gaining momentum, another of those interminable snaking queue sections was annoying, but dawn was at last breaking. Shafts of light streaked down the Thames, breaking through the night gloom signalling a welcome dawn. London was awakening. Our hearts lifted and everyone

stretched like salamanders, the gathering warmth of the sun infusing our bodies and feeding our souls. Undoubtedly the dawn had transformed us and renewed with energy and purpose we passed London's landmarks, St Pauls, Millennium Bridge, Tate Modern, South Bank, London Eye, just like turning the pages of a Tourist Information pamphlet!

We finally hit Westminster Bridge where a team of volunteers greeted us enthusiastically whilst forensically inspecting our wristbands!. No wristband, no way through and a long way back. It was Saturday morning and the sun was shining and we were on the last lap. Walking along the embankment below St Thomas Hospital is the wall of hearts etched with messages of love and remembrance to loved ones who were lost during Covid. It is a poignant reminder of the last few years and reminded us all of a challenging time. On the other side of the river the refurbished Houses of Parliament and Big Ben glowed golden and impressive with their regal beauty. We were now speeding along, sure of foot, shedding jackets, gloves and hats as the sun grew stronger and the sky a deep blue.

Lambeth Bridge was ahead, it had become a beacon of triumph, a crossing of the waters, South to North and therefore closer to our destination.

We turned right at the end of the bridge, and with a huge sigh

gazed down into Victoria Gardens. The volunteers here were all high energy, jovial, encouraging and congratulatory. 'You are so nearly there, well done, incredible isn't it?', having fun?' We were caught up in their enthusiasm and just a little tipsy with self-satisfaction. The policemen though looked serious with athletic, strong limbed Kevlar clad bodies and sub-machine guns, patrolling endlessly with steely gazes. At first the atmosphere was festive as we practised our curtsies and bows and talked of what we might see and what we might do when at last we stood before the catafalque. But then we talked in hushed voices as we continued to zig zag up and down across the well trodden disappearing grass. We consumed what we could, we would have to give up all food, and liquids and excess baggage. The zig zags went on and on, and so well designed you had no idea you had walked another 3 miles! Closer we got and quieter the queue became, slower the gait, but faster the heart rate. We were existing in our own time bubble, it was beginning to feel surreal.

We were coming to the end, the line petered out into a slightly untidy gaggle. We sort of stumbled into the security tent where we were greeted by efficient, bright eyed security personnel, kind, firm, administering a thoroughly good frisking and patting down. Someone had to give up their expensive hand cream, but not before the officer offered them a

last dollop to moisturise their hands. The atmosphere was kind, everyone at their best, calm, but expectant and every member of staff recognised how much the next few minutes meant to each of us and how unforgettable it would be. They were helping to be memory makers.

And so it was we came to the bottom of the stairs, they are a short flight, and as it happened too short to prepare yourself for what comes next. At the top you turn to the left and your first impression is of the splendour of the hall with the soaring walls supporting the intricate hammer wood roof. There appeared to be a collective intake of breath as everyone's gaze was drawn to the centre of the hall. A small, perfectly formed tableaux appeared to float above the floor. The colours so vibrant, so sharp and clear they intensify the perfection of the arrangement. Her Majesty's coffin hovers on the catafalque adorned with the sovereign's Orb and Royal Sceptre, and the magnificent Imperial State Crown. They appear small, regal, highly personal and vulnerable, evoking huge emotion in everyone around us. The guardsmen and yeoman are so still, so frozen in pose, their heads slightly bowed, their faces as if carved in stone. They are immaculate in every sense and you feel as if you are viewing something intensely private and special, which of course you are. The silent beautifully dressed attendants cajole you to move down the stairs. Reluctantly you

respond to their elegantly, but effective choreographed arm and head gestures. In a daze you descend the steps, desperate not to trip as your gaze is transfixed on the centre of the room. All savouring every second and determined to digest everything with eyes, ears and nose. Each has their moment, you shuffle your way forward for those fleeting few seconds. Just time for a silent word, a bobbing curtsey to show respect and a quick bow to say goodbye. You don't turn away, but keep looking back for as long as possible, trying to take the perfect picture to lock away in your memory album. For us, the sun was streaming through the huge doors creating a lovely carpet of light on which to exit. Just time for one long, last glance and then out into Parliament Square to a cacophony of noise and milling crowds reminding us of the vibrancy and energy of the living world.

It was such a contradiction from the scene we had just left, but that already seemed like another time, another place. It had been an extraordinary experience, every part of which is unforgettable.

Susan Weathrall-King

Poets Corner



Why do I wear a poppy you ask,
Well, I will tell you why.
I wear my poppy as a sign of thanks
as the soldiers go marching by.



Why do I wear a poppy you say
& what earthly good can it do?
I wear my poppy as a sign I care
as the soldiers go marching through.

Why do you wear a poppy? I ask,
did you lose a Bill, Joe or Jack.
Lets all wear our poppy as a sign of respect
for the soldiers, who'll never march back,

So don't ask why I wear a poppy
there's no need for who, when or why,
It's just to say " Thanks Tommy Atkins"
& the soldiers? They keep marching by!!

Joy Tofts



Submitted by Trevor Bevan

CHARLIE'S LONDON MARATHON

Charlie and Lucy Murray and their sons Sam (6) and Freddie (4) boarded the London train on Friday, 31st September, which was a day earlier than expected as the following day's rail strike would have prevented them from getting to the London Marathon on time, where Charlie was a sponsored runner for the NSPCC. The extra day was spent admiring the dinosaurs in The Natural History Museum and enjoy the delights of Hyde Park. After a good night's sleep, the big day dawned and Charlie set off with all his kit – water pack, energy chews, phone, and some warm clothes. He soon found that there was no trouble in finding the starting point in Greenwich as 43,000 runners were all heading in the same direction.

The possessions he didn't need were bagged and numbered and loaded onto a large lorry to be taken to the finish. There were three colour coded starting zones and he was in the green zone with the sponsored group and the celebrities, although he didn't see any of the latter! There was quite a bit of waiting around at this stage, but as starting time approached, he ditched his warm clothes which had come from a charity shop. The organisers collected up these items and returned them to a charity. He had an app on his phone which linked to a transmitter badge allowing the organisers to time him and his fans to follow him on their phones.

Running through London with so many people and the wonderful crowds spurring him on was a surreal experience, especially when circling The Cutty Sark and running up The Mall. The roads were wide most of the time allowing space for each of the runners, but occasionally the pace dropped as the road narrowed to allow crossing places for spectators.

Of course, everyone has their own way of dealing with situations, but Charlie was able to apply tunnel vision to achieve his goal in a very respectable 3 hours 51 minutes. Well done, Charlie! He was greeted by a delighted Lucy and two boys who had walked the equivalent of their own little marathon through the streets of London!

Then it was on the train and back to Luppitt – with no lasting ill-effects except for three black toenails!

Charlie's run raised £2,888.00 for the NSPCC. Thanks to everyone who donated.

Our area was well represented at the London Marathon. Mandy Riley's

son was there to support his girlfriend Vanessa Jackson who ran her first marathon for a cancer charity in 5½ hours.

Esme Moffat from Combe Raleigh ran in the elite group raising awareness of Farmers for Action.

Congratulations everyone!

Mary Hill



Mystery Apple Tree

This old apple tree is set in the middle of Hense Moor all by itself. It has produced a fine crop of good sized red and yellow apples, which are sweet flavoured but still quite tart.

How did it get there? Was there an orchard or dwelling there at one time? Does anybody know?

Mary Hill



A Luppitt Stroll

I am strolling through the woods. It is a small narrow wood behind a field at the end of Gully lane near Jack's House.

In some ways the phrase 'can't see the wood for the trees' is the most inapt ever said. It's meant to describe not being able to see the big picture because you're too focused on small details-and though that's a worthwhile caution, it's the opposite of how being in the company of trees makes me feel. A wood is a brake on time-a forcible slowing of pace capturing of atmosphere for consideration in all it's smells sounds and subtleties, much more closely than normal. And by normal I mean the world outside the woods-where time runs at regular speed, and there are always so many faraway things beckoning your attention. Having your pace slowed and vision foreshortened, being sheltered from the rushing of time and event, it's one of the most helpful, hopeful things a walk in the woods can offer. The time of year doesn't really matter. The woodland provides atmosphere, experiences and unique moments in time. Even if there is rain, snow, fog and sunshine. I like to capture an image of the intimate areas in the woodland, and capture the ever changing atmosphere and beauty that it provides. Shade, shelter, stories, smells, colours, creatures and crunch. Where would we be without woodland walks.

Trevor Bevan



In 2012 Marion Machell contacted Jonathan and Jane Soar who were then living at Dolish Farmhouse. The Rosewell family who owned the farmhouse at the time lived there for over 80 years. This is the first in a series of letters which we will be printing over the next few months. Thank you to Tracey Rosewell for bringing it to our attention. We hope you enjoy reading this fascinating piece of Luppitt history.

MY TIME AS AN EVACUEE IN LUPPITT VILLAGE AUGUST 1940-APRIL 1941. THIS IS AN ACCOUNT I USED WHEN I WENT INTO MY GRANDCHILDREN'S SCHOOLS. BY MARION MACHELL

My mother had already been in hospital, and I had spent time with an uncle and aunt, followed by four months back in my home. However, when my mother had to return to hospital it was decided to evacuate me. We went to a small village, Luppitt, to visit some neighbours of an aunt who were holidaying in a thatched cottage. My parents asked whether there was anywhere in the village where I could stay for the time Mum would be in hospital. It happened that the local farm had taken two girls, but they were soon returning home. I took their place and after three weeks in the thatched cottage (Tapster) I went to live on the farm. Mum was not due at the hospital until the end of September, so she and I settled at the farm.

It was very strange to have no electricity or gas. We took a nightlight up to the bedroom and an oil lamp was used for the downstairs area. The farm was quite large, and I had my own room. There was a lady called Mrs Wells with three boys who rented two rooms upstairs and had at one time been a sister nurse in Lewisham hospital. This gave a link with us as we were from there and she reassured Mum she would keep an eye on me. She was very kind and came in each evening to say goodnight.

The farmer's wife was very kind but always very busy and didn't have time to supervise my washing and hair brushing routines. Mrs Wells took it upon herself to do this and I spent a lot of time with her family and walked up the hill to school with her eldest boy John aged eight (I was six).

The farm was halfway up the hill with the school, church, post-office and pub being at the top of a very steep hill. In the winter we had severe blizzards and used to slither up and down the hill on knees or our bottoms. The chains from the swing were taken down and wrapped around the tractor wheels so they could grip the ice.

Life at school was very different. The building was meant to house a few

children from the village, but it also had a large room which could be divided. Therefore, we sat in rows according to age. Those of us age 5-11 years were in one room with the village schoolteacher who was very nice and the 11-14 year olds were in with two teachers who had accompanied the children from London. I was so pleased to be in with the village teacher as the other teachers used to shout at their class.

The time spent at that school was the first time I had been to school every day in the same place, and I learned to read and write – using capital letters – and there was a reading scheme called Beacon Readers. I loved reading and one day I was found to have stored up several books in my desk and was, of course, told off. We had desks for two people side by side, and we had to lift-up lids and every so often the desks would be inspected to see how neat and tidy they were.

Opposite the school were the church and the pub. I had to attend church every Sunday with the family – not the farmer and his son, but we were allowed out before the sermon to play in the playground of the school. If someone missed church the vicar would call the next day to ask the reason. The village families were slightly afraid of the vicar. The Luppitt Inn was next to the church and where the Home Guard met. I used to buy a 5d (old money) bar of chocolate from the pub when it was available. Opposite the pub was the village post office where I collected my parcels from Dad.

Here are some of the other things I remember from my stay. I hated the geese with their squawking and as I had to cross the yard to enter the back door, I would summons up courage and run with the geese honking away behind me. I had chilblains on my hands and knees and sometimes I had earache which Mrs Wells attended to.

I always had plenty to eat and the very busy farmer's wife sent a letter every week to my parents in with my own poor writing efforts at writing. We picked primroses and other wildflowers (it was allowed back then) and I collected eggs with the youngest daughter. We picked and packed up daffodils to send to London in big cardboard boxes. I did not have a bath or wash my hair very often. I did not like visiting the school dentist when I saw him without my mother, and I was afraid of the young bullocks in case they chased me. I loved the piglets and the puppies and the kittens.

There were no bombs or air raid warnings, and I slept in a bed all the time which was not the case in London where we slept (and were to sleep again from 1942-1944) in the Anderson shelter in the garden.

I spent a lot of time with the youngest daughter Peggy (then about 14). Ralph worked with his dad and Mary also did a lot of work on the farm. I last saw Ralph in his garden in about 1992. I went back in 1972 to see them and of course it was all quite different. They remembered me as the little girl whose mother was in hospital.

However, although I was reasonably happy on the farm, I was homesick sometimes and missed my parents and so was overjoyed in 1941 when they came to collect me and take me to another village this time in Kent where I would remain for another eight months and try yet another school.

Submitted by Mary Hill

Luppitt calendars are now available £7 each of which £3 goes to support Devon Air Ambulance.
For sale at Friday market or ring Jacky on :
07432009301



Quiz Page

WORDS WITHIN WORDS

In 1-3 fill in the missing words. In each case, the three words used will be anagrams of each other.

1. The children accepted the _____ to trespass in the wood and did not _____ the warning notice which in the end cost them _____.
2. In the heat and _____ of the sun a _____ crowd gathered to enjoy the pomp pageantry of the splendid _____ event.
3. Lesley _____ to concentrate, but she _____ too easily when studying for her exam, so she may have to take a _____.

A country is hidden in each of these sentences below. The letters appear in the correct order, but split between existing words.

4. Who would want to go to a spa in this country?
5. The rabbit which I let go ran off into the distance.
6. Can a date be decided for next months meeting?
7. The pen fell out of reach in a recess behind the radiator.
8. He burst through the tape running at speed.

Answers to last months quiz

1. Nigel Hurst 2. Lesley Goode 3. Margaret Jarman 4. Iris Selway 5. Julia sparks 6. Amian Fry 7. Martin Hemsley 8. Andrew Tucker 9. Pearl Pulman 10. Christine Ryder 11. Stephen Smith 12. Vanessa Nancarrow 13. Pat Bussey 14. Steve Berry 15. Peter Wilson 16. David Street 17. Mary Joyce 18. Sue Jenkins

Answers in next month's Edition

Jacky Omalley

Garden Jottings

If you go into our poly tunnel in Autumn it is full of Nerines in flower - pink, white, red, salmon. Most of the year, throughout all summer, there are only green leaves. You have to wait until September and October to see any flowers. By that time summer is over, nights are longer, days cooler.

Nerines are native to South Africa. About 30 species grow in different habitats throughout that country. Only one or two can be grown in the UK. The one you usually see is *Bowdenii*, pink often, more rarely white. It is said to have been sent home by Mr Bowden about the turn of the last century to his mother in Devon, where it has grown well ever since.

Another Nerine, *Sarniensis*, also called the Gurnesey Lily because some bulbs of it were said to have been washed up there from a shipwreck, has scarlet flowers in late August after being watered. It needs a dry summer when the leaves die off, and a winter with only light frosts. Attempts have been made to breed a hardy red by crossing *Sariensis* with *Bowdenii*. This is difficult because the offspring is not fertile.

Nerines look like pink *Agapanthus*. They should be planted in sunny spot with good drainage. In heavy clay the bulbs are likely to rot. Feed sparingly with a tomato type fertiliser. Do not give them lime. The seeds are round and green. They are sown on the surface. You can often see the radicle come out and go into the soil. They take several years to flower and are often slow to clump up.

Nerines in flower give your garden a bright vernal look in the gloomier days of Autumn.

<https://www.gardenersworld.com/plants/nerine-bowdenii/>



UPOTTERY SCHOOL

Harvest Festival

It was wonderful to be able to see so many of you at our Harvest Festival. As you will be aware, it is the first time we have performed for Harvest in St Mary's Church since Autumn 2019. It was super to see children from across the school coming together to celebrate, give thanks and be grateful for all the things we have that are so important to us in our lives. I was especially pleased with how confidently the children were able to perform for you all. We must remember that for some of our youngest children this is the first time they have been away from the school site, let alone performed in front of an audience, so I think they did extremely well. I was also very impressed by the confidence shown by some of our older pupils. Learning and developing oracy (the ability to express oneself fluently) skills is very important. We all know how vital speaking in front of others, and being able to express yourself is as a key life skill. It was therefore very encouraging to see children from year 4, 5 and 6 rise to this challenge so brilliantly; you were all a very good role model to the younger children watching. Thank you to all those who provided a Harvest donation. All foods collected will now be taken to the Honiton Food Bank, and I know your generosity will be very much welcome.

PTFA Barn Dance

Well done to our super PTFA for all their hard work this half term. It has been through their support that we have been able to resource our whole school reading offer so effectively here in school, either through increasing the Accelerated Reader book stock in the library, or by increasing the range of books in our phonic scheme 'Sounds Write'. They also arranged an Upottery Barn Dance at Luppit Village Hall which was a great success. I would therefore like to thank all those involved for giving up their time and organising such events, in order to help support the school. Your efforts, energy and enthusiasm are very much appreciated by governors and staff alike – thank you.

Year 5/6 Pixies Holt Residential

This week year 5 and 6 will be spending 5 days and 4 nights on Dartmoor, at Devon County Councils residential outward bound centre, Pixies Holt. This has been a trip which has taken place now for many years, and brings immense benefit to all who take part. From learning independent life skills, as part of being away from home having to organise yourself, to taking part in adventurous activity, where developing personal confidence and overcoming setback and reaching personal goals in central, a visit of this nature cannot be underestimated for its positive impact on young people. I know not only will the children greatly benefit from the experience, and will be positive ambassadors for Upottery Primary while they are away, they will also form friendships and bonds which will really help them back in school, as they progress through the remainder of this academic year. For those of you who have ever been on a school residential you know they will form memories which will last a life time, and help shape them into the people they are to become, and it is wonderful that we are able to offer them this experience here at Upottery.

Chris Legg Head Teacher

A big thank you to everyone who donated a cake to the Macmillan coffee morning and those who attended and gave generously. We raised an amazing £323.13. Thank you.

Tracey Rosewell



BULLETIN BOARD

If you want to join the Parish Notices WhatsApp group, please contact Lucy Murray on 07968900349.

VOLUNTEERS NEEDED FOR FREE TREES PROJECT

As a joint project between the Commoners and the Parish Council, 200 trees have been ordered under a scheme run by Eforests. Species ordered include oak, hazel, blackthorn, hawthorn and wild cherry. The trees are supplied free of charge and must be planted on publicly accessible lands. The trees are due to be delivered at the beginning of November.

All offers of help with the planting would be much appreciated so please contact Andrew Tucker on 01404 891253 (mobile 07831 589111) or the Parish Clerk on 01404 861565 (mobile 07944 625025).

THE BLACKDOWN HILLS REPAIR CAFE

We are offering you all to attend our next Blackdown Hills Repair Café at the Parish Hall in Hemyock on the 26th November 2022 from 10am until 1.0pm where you are able to bring all your items in need of repair, and enjoy a range of delicious refreshments which will be on sale from our tea room.

Stephan-Coordinator of Blackdown Hills Repair Cafe
Please do not hesitate to contact me on 07715460783, or at
sfelehner@aol.com



Dunkeswell Mission Community
Dunkeswell, Broadhembury, Luppitt, Sheldon
Upottery and Plymtree



REMEMBRANCE 2022

This year our service of remembrance will be led by Revd. Jane and we will again be making a collection for the Royal British Legion.

There will be a display of crochet and knitted poppies made by the Poppy group over the last few months.

Church opening times

Our Church building is unlocked during daylight hours from Wednesday to Monday each week for contemplation and prayer.

Should you wish to hold an event in the Church please contact Sara on 891140.

SERVICES IN NOVEMBER

6th	11:00 AM	Holy Communion BCP	Revd Stephen Treeby
13th	10:50 AM	Remembrance	Revd Jane Penn
20th	11:00 AM	Holy Communion	Revd. Jane Penn
27th	11:00 AM	Advent Hymns and Readings	Lay Led

ADVENT

There will be a special service of Advent Hymns and Readings in St. Mary's on Advent Sunday. The Church will be holding an Advent tea at Newmans House from 2:30pm until 4pm.

LUPPITT COMMUNITY CHRISTMAS CHOIR

November rehearsals will be held at 4pm in the village hall on 13th, 20th and 27th November. All ages and abilities are very welcome to come along. No previous experience required.

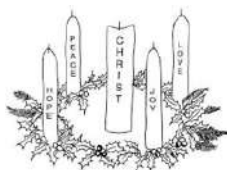
HARVEST FESTIVAL SERVICE

We have received thanks from both the Honiton Food Bank and Honiton Veg Bank for the donations collected at our Harvest Service. A huge thank you to everyone who brought along goods before and on the day and also to all who gave their time to decorate the Church so beautifully for this special service.

CAN YOU HELP?

There are many small, routine maintenance tasks involved in keeping our Village Church open and running. If you are able to give a little time to help on a regular or ad hoc basis this would be enormously helpful and much appreciated. Please contact Sara on 891140 in the first instance.

www.dunkeswell.org.uk and find us on Facebook @sixworshipstogether



ADVENT TEA SUNDAY 27 NOVEMBER FROM 2:30PM

AT NEWMANS HOUSE, LUPPITT

A special Christmas themed afternoon tea to raise funds towards the cost of the Christmas candles for St. Mary's.



Entrance £3 includes first cuppa and cake
Raffle * Mulled Wine



Christmas at St Mary's

Sunday 4th December at 3pm

Christingle Service in the Village Hall

Sunday 18th December at 6:30pm

Carols by Candlelight

Followed by mulled wine and mince pies

Christmas Eve at 4:00pm

Crib service for children of all ages

Children are invited to dress up

Christmas Day at 11:00am

Festive family service

From Rev Penn's Pen

They say that 48hrs is a long time in politics. When Liz Truss assumed her role as prime minister, the Daily Star started an experiment, they bought an iceberg lettuce to see which would last longest, the iceberg lettuce or Liz Truss' premiership. Today they held a party for the lettuce.

All very frivolous I know but we are living in the time of change, processes and programmed options and whichever way you look things seem to be moving more and more rapidly, and I think this more than just the perspective of my ageing. The Church must follow suit we're told, a plethora of Christian churches and worship styles does exist today, many with their catchy straplines to give a their view of themselves or their aspirations in a nutshell in case you might be tempted to try them out. For example the diocese of Exeter's mission statement is about 'growing in prayer, making new disciples and serving the people of Devon with joy'

Today, contemporary times, is a curious concept in that today is history 24 hours later. Yes the church needs to be inclusive and welcoming but no church will survive over the millennia, as it has done to date (well, until 60 years ago) by attempting to pander to what people like to have, but rather by revealing the ever present God in Christ Jesus. It is not always politically correct, and it is certainly counter cultural, but always our aim is to present the loving face of the Christian vision of God to people of all nations and all cultures.

We cannot guarantee success today but we can hope to continue presenting Jesus as clearly as we can to strangers. We have to be able to speak of our faith in ways that make sense in our times, the church is jolly good at wrapping things up in short cut language that only 'insiders' can make sense of, so perhaps that is something we could work at changing as we try and speak about the ever present God who wants to know us and have a relationship with us, the God who sent his son Jesus to rescue us. As we do this we have to be inviting and welcoming and not exclusive or excluding, socially or culturally, yet unafraid of inviting everyone to an understanding of shared values transcending other philosophies.

It is in that spirit of prayer, study and spiritual direction that we can go forward with God's blessing.

Revd Jane Penn

Scripture Cake

1. 4 ½ cups of 1 Kings iv 22
2. 1 ½ cups of Judges v 25
3. 2 cups of Jeremiah vi 20
4. 2 cups of 1 Samuel xxx 12
5. 2 cups of Nahum iii 12
6. 1 cup of Numbers xvii 8
7. 2 tbs of 1 Samuel xiv 25
8. 6 articles of Jeremiah xvii
9. A pinch of Leviticus ii 13
10. 2 tsp of Amos iv 5
11. Season to taste with 11 Chronicles ix 9

Add citron and follow Solomon's advice for making a good boy. Proverbs xxiii 14, and you will have a good cake.

answers

- 1)flour, 2)milk, 3)sugar, 4)currants & raisins, 5)figs,
- 6)almonds, 7)honey, 8)eggs, 9)salt, 10)leven (baking powder)
- 11)mixed spice

Proverbs is about beating it



Dunkeswell Mission Community
Dunkeswell, Broadhembury, Luppitt, Sheldon
Upottery and Plymtree



Church cleaning & flower rota



5 November 2022	Mary Joyce & Pearl Pulman
12 November 2022	Mary Hill
19 November 2022	Sue Piechowiak
26 November 2022	Jean Gardiner & Joy Tofts



Quaker Meeting for Worship

Spiceland Quaker Meeting Uffculme EX15 3AZ

We Meet for Worship at Spiceland every Sunday at 10.30am till 11.30am

- this is a blended Meeting also available on Zoom -

All are very welcome.

Meeting ID:865 5570 2735 Passcode: 498173

For more information phone Ali Dominy 07810768557 or use the "contact us" form on our website: <http://www.spicelanduffculmequakers.com/> or

email spicelandnotices@btinternet.com

On the eleventh hour of the eleventh day of the eleventh month in 1918 the guns fell silent, and World War I ended. More than 100 years later, at 11.00am on 11 November, the nations will pause to remember. In silence and hope.



Many chose to wear both red and white poppies together. (Photo: Nik Dadson)

In sombre days of Remembrance, many Quakers choose to wear red or white poppies. Some wear both together.

The first red poppies were sold by the Royal British Legion in 1921 to support World War I veterans and to remember service men and women killed in conflict. In 1933, the white poppies were introduced by the Women's Cooperative Guild, to say very clearly, "No more wars. No more killing. Let us work for peace."

The white poppy represents the hope of peace. They represent remembrance for all victims of war, a commitment to peace and a challenge to attempts to glorify or celebrate war.

<https://www.quaker.org.uk/news-and-events/news/remembering-for-peace-1>

PRAYER FOR REMEMBRANCE

Let us remember before God the men and women of all nations who have died as a result of war - those whom we have known and whose memory we treasure; those we never knew, and those who died unknown. We will remember all who have lived in hope, but died in vain - the tortured, the innocent, the starving and the exiled, the imprisoned, the oppressed and the disappeared.

Living God, by whose love we are united with one another across the boundaries of time and space, bring us to a new remembrance of your love and life, reflected in earth and sky, and every person who ever lived. Teach us to be reconciled to one another and to you. Amen. - Adapted from a prayer by John Ansell

Est. over 75years.

DELVE electrical

Approved engineers and contractors.

Free estimates

Domestic, Agricultural & Industrial Installations & Maintenance,
Economy 7 Heating, Spares & Repairs, Motors & Generators.

For all your electrical needs - large or small.

Unit 1, Devonshire Way, Heathpark, Honiton. EX14 1YF.

Tel: 01404 42958

Email: info@delveelectrical.co.uk

Website: www.delveelectrical.co.uk



ASHCULME

TREE WORK | LANDSCAPING | FENCING | PAVING | MAINTENANCE



TREE WORK - ALL ASPECTS OF TREE WORK INCLUDING: REMOVAL, CROWNING & LIFTING

STUMP GRINDING - TOTAL REMOVAL OF ANY SIZED TREE STUMP

LANDSCAPING - ALL PROJECTS UNDERTAKEN

FENCING - NEW INSTALLATIONS OR REPAIRS TO EXISTING FENCES

TURFING - PREPARATION & LAYING OF YOUR NEW LAWN

PAVING - REPAIRS TO EXISTING PAVING OR COMPLETELY NEW INSTALLATIONS

GARDEN MAINTENANCE - HEDGE & SHRUB TRIMMING, FRUIT TREE PRUNING & MORE

EMERGENCY 24/7-

07815 146343

www.ashculmetreesurgeons.co.uk
info@ashculmetreesurgeons.co.uk

FOR A FREE QUOTE FROM YOUR FRIENDLY, RELIABLE & ESTABLISHED LOCAL FIRM:

**CONTACT
PAUL DURMAN 01823 353302**



Your Advertisement Here



The York Inn



Honiton Road, Churchinford. TA37RF 01823 601 333

**NOW AVAILABLE.
UPSTAIRS FUNCTION ROOM WITH WIFI, PROJECTOR & SCREEN.
IDEAL FOR MEETINGS, PRIVATE PARTIES**

Country Pub offering a warm welcome.

Log Fire. Large selection of Ales including local brews, Games Room, Large screen TV.

**Monthly Meat Draw. Lots of Special Events
Good wholesome food using local ingredients. lunchtime & evenings.**

Specials board & Homemade Pie Board. Takeaway.

Sunday Roasts. Saturday Breakfast. Parties catered for. Patio Area. Dogs Welcome

Email: theyorkinn@yahoo.com

www.yorkinn.co.uk



CONNETTS FARM DUNKESWELL

NOW AVAILABLE IN DUMPY BAGS

£75

- Mushroom compost
- Wood chip, topsoil
- Farmyard manure
- Horse manure
- Compost
- Chicken manure
- Ornamental bark
- Wood chip mulch

SMALLER BAGS ALSO AVAILABLE

approximately 25kilos - £2 per bag

All products are available in bulk by the m3

**Topsoil and compost is sieved or screened
producing a lump free stone free product.**

Bulk orders can be mixed

Example 1/3 topsoil 1/3 manure
1/3 compost, Great for raised beds

**100%
PEAT
FREE**

CONTACT US TODAY

Heather: **07809 870230** | Nick: **07860 459745**

The Farm: **01404 891684** | Evening: **01884 841694**

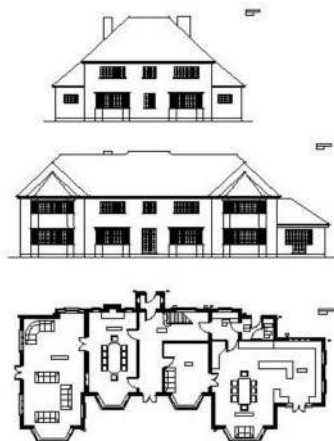
www.connetts.co.uk | connettsfarm@outlook.com

 Connetts Farm  Connetts Farm

Delivery available at cost

**Ringborough
Design and
Planning**

Helping you
design your
dream home



Guillaume Dijon

Telephone: 01823 421 049

Ringborough House

Mobile: 07892 406 096

Churchinford, Taunton TA3 7EB

Email: gdijon@consultant.com

Trees, Woodland & Countryside Management

Woodland & Countryside

Woodland management Garden maintenance

Hedge maintenance / Hedgelaying & Planting

Fruit tree pruning

Tree Work

Felling Crown raising Planting Crown thinning

Technical reductions Pollarding All other tree work

Previous employment: Green Mantle Conservation Contractors National Trust Quantock & Blackdown Hills

Andrew Coleman Environmental Contractors



Phone Rory Proctor: 07966 982845

Email: info@rfptrees.co.uk

Facebook: [rfptreesurgeons](https://www.facebook.com/rfptreesurgeons)

www.rfptreeandlandscapeservices.co.uk



Lending with Heart and Mind

**East Devon District Council fund a
not-for-profit loan scheme for homeowners and landlords*.**

**We understand the expense of maintaining your home and we work with
you to take the stress out of funding repairs, improvements or adaptations.**

We see you as an individual, not a credit score. Our knowledgeable team of advisers
will guide you through the process of applying for a home improvement loan.

For a no-obligation assessment or more information
visit www.lendology.org.uk or call 01823 461099

Heatherton Park Studios, Bradford on Tone, Taunton, TA4 1EU

*subject to eligibility

LOCAL MEAT FOR SALE

Higher Moorlands Farm

* Grass fed beef & hogget

* Free range pork, raised on
British grown peas and barley

For a price list please email:

HigherMoorlandsFarm@gmail.com

Or phone

Ollie 07527627296

Eve 07807305881

PEACE GARDEN PRODUCE

Fresh fruit and veg

Groceries

Dairy products

Cakes and Pastries made to
order

Hardwood logs for sale

Nets

Half trailer or Full trailer

Delivered

Please contact John 07748780096

Barbara 07796616389

Or 01404 891412



Finding the best beer in town
doesn't take a lot of investigating



OTTER BREWERY
www.otterbrewery.com



Upottery, Honiton, Devon, EX14 9QT
01404 861705
Charity Number 1157940

Experienced & qualified staff, including 2 Early Years Teachers
Purpose built building * secure outside play area & garden
2-5 year olds Monday to Friday from 9-3:30pm (term time)
Parent & Toddler group from 1:15pm-3:15pm every Thursday.

To find out more or arrange a visit please contact **Abi Few on 01404 861705**
upotterypreschool@outlook.com www.upotterypreschoolcio.weebly.com

Music and Movement or Soft Play Session for Children

Luppitt Village Hall ,Tuesday mornings , term time only
9.30am to 11:00am , with approximately 45 minutes of singing
and dancing

Price is only £1.00 per child, to include a drink and a biscuit,
also coffee or tea for the adults

From babies till school age. **Any enquiries contact Maria 01404 891058**



// It is our belief that a combination of good herd planning, routine monitoring and preventative medicine is the key to success on a modern farm. //



Great value medicines delivered to farm!

mountvets.com

- ✓ 11 Experienced Farm Vets
- ✓ Own Lab For Quick Results
- ✓ Regular Farm Skill Courses
- ✓ Positive Approach To Farm Health Management



Wellington Wiveliscombe Broadhembury

Tel: 01823 662286


COLIN LAYZELL
 CABINET MAKERS

**Makers of
 Furniture, Kitchens
 & Interiors**

www.colinlayzell.co.uk
 T: 01404 891815
 E: colin@colinlayzell.co.uk



S A BOLAND LIMITED
 BUILDING CONTRACTOR & CARPENTER

We take your ideas and designs and turn them into reality.

Specialising in :

- Extensions
- Barn Conversions
- Conversions
- Home Improvements
- Kitchens & Bathroom Renovations
- Roofing
- Carpentry & General Building

Contact Stuart to discuss your requirements.

T. 01404 42467

M. 07774 907733

saboland@btinternet.com
 sabolandltd.com

Stuart's Sweeping Service



Support your local trades – use a local Chimney Sweep

A clean chimney is a safe chimney

Chimney, woodburner and range cooker sweeping.

Power sweeping, Bird's nest removal.

Camera inspections, Cows and bird spikes fitted.

Wood-burners, multi-fuel stoves and liners installed.



07432 118318

Evening and weekend appointments available.



Member of The Guild of Master Sweeps.

HETAS Approved Chimney Sweep.

HETAS Registered Installer.

Sweep Safe accredited.

Thatch trained. NFU Insured.





Highfield Stores & Post Office

Tel: 01404 891015

The village store offering so much more:

Situated in the Highfield Estate, Dunkeswell, we have a huge range of groceries, fresh meat, fruit & veg, newspapers and much, much more!



Our post office provides most services (excluding car tax).

You can deposit cash and cheques into almost every bank. 7 DAYS A WEEK !!

Why not avoid the queues in the high street and enjoy a browse in our spacious, well-stocked and friendly PREMIER shop with plenty of free parking and fantastic monthly offers!!

**SHOP & POST OFFICE OPENING HOURS:
MONDAY-SATURDAY 7AM-9PM
SUNDAY 8AM-8PM**

Unit 5 Culme Way, Dunkeswell, Honiton, EX14 4JP
Email: highfieldstores14@gmail.com

- Window Cleaner
- High reach hot water system
- Frames and doors all in
- Gutters/Facias Cleaned
- Patios
- Solar Panels

Excellent references if required
For that personal service contact :

Sean Harris
Telephone: 01404 814963
Mobile: 07737 419077



Plumbing & Heating

Southwoods Farm
Ashill
Cullompton
Devon
EX15 3NS

Phone: 01884 841130
Mobile: 07860 441510

No call out charge

- All aspects of plumbing & heating
- Boiler, Aga & Rayburn servicing
- Gas, Oil, LPG & Solid Fuel
- Bathroom installations
- Gas Landlord Safety Certificates
- Under floor heating specialists
- Free estimates
- All work guaranteed

Contact Neil Thomas



Reg. 025221C



Reg. C4016



Reg. 215088



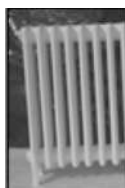
Reg. 4629



www.njtplumbingandheating.co.uk

Need to rejuvenate old metal objects?

We provide a variety of services ranging from powder coating to hot zinc spray and shot blasting. We keep a range of about 100 colours in stock. Most are exterior polyesters, which provide excellent durability and colour retention on gates, railings and garden furniture.



Industrial Coating Supplies

Phone 01884 34506

Opening Hours Monday - Thursday 8 am - 5 pm or Friday 7 am - 1 pm

email coatingsupplies@aol.com www.industrialcoatingsupplies.co.uk

Units 1 + 2 Simmons Place, Kingsmill Industrial Estate, Cullompton EX15 1BH

**Your Advert
here**

MANOR ANTIQUES

RESTORATIONS

Specialist in Antique Furniture Restoration

Cabinet making, Inlay, Repairs, Veneering

French Polishing, Wood Finishing,

Bespoke Furniture made

CALL IAN WEDERELL

MOBILE 07732549414

OR 01404 891571

30 years in the trade

www.manorantiquesrestorations.co.uk

JOB VACANCIES

RED DOORS FARM

GILL AND TIM HUNT

WOULD LIKE TO EMPLOY LOCAL CLEANERS FOR OUR
5* HOLIDAY COTTAGES



£12.00 PER HOUR

COME AND JOIN OUR SMALL AND FRIENDLY TEAM

FRIDAYS AND/OR MONDAYS 10.00AM TO 2.15PM

PLEASE CALL GILL HUNT ON 01404 890067

OR email info@reddoors.co.uk



BUILDING SERVICES LTD

KFBS LTD

**ARCHITECTURAL DESIGN
PROJECT MANAGEMENT
PLANNING & DEVELOPMENT
BUILDING CONTRACTORS**



• RESIDENTIAL & DOMESTIC PROPERTIES • LISTED & AT RISK BUILDINGS
• HOSPITALITY & LICENCED PREMISES • COUNTRY HOUSES & HOTELS
• AGRICULTURAL/EQUESTRIAN • INDUSTRIAL & COMMERCIAL

**FROM INITIAL CONCEPT THROUGH TO FINAL COMPLETION
FREE INITIAL ADVICE AND ESTIMATE**

01823 666 223



CIOB



RICS

info@keithfarmer.co.uk



Your friendly, local Small Animal Veterinary Practice

Honiton

62 New Street
EX14 1BZ
01404 42750

Hemyock

Unit 1c Station Rd Ind Est
EX15 3SE
01823 681067

www.newstreetvets.co.uk

Consultation by appointment only

★ **24 hour Emergency service available** ★



Proud members of
Checkatrade.com
where reputation matters



★ **Trustpilot**



**Everything
Plumbing
& Heating**

Email: info@synergisw.co.uk Website: synergisw.co.uk

- | | |
|---------------------------|-----------------------------|
| ✓ New Boilers | ✓ Plumbing |
| ✓ Heating Systems | ✓ Heating Care Plans |
| ✓ Boiler Servicing | ✓ Boiler Repairs |

24 Hour Availability
Call: 01404 234 363



Paul Prettejohn

Garden Machinery & Groundcare



Email: paul.prettejohn@btopenworld.com

www.paulprettejohn.co.uk

Honiton: 01404 890257

Wellington: 01823 662656



NEW PRODUCTS



USED PRODUCTS



REPAIRS



SERVICING



COLLECTION & DELIVERY



CUSTOMISATION

*Professional Gardeners
& Landscapers*



Goodlife
GARDENERS &
LANDSCAPERS

Grass cutting, hedge trimming,
tree surgery and planting.
Garden waste removal service.
Regular gardening undertaken
throughout the year.

.....
WE OFFER A FRIENDLY AND
RELIABLE SERVICE

.....
PROFESSIONAL HARD AND SOFT
LANDSCAPING TEAM FROM
DESIGN TO COMPLETION ALSO
AVAILABLE

.....
Phone Rob or Shelley on 01404 881756 or mobile 07866 672150
www.goodlifegardeners.co.uk

A MESSAGE FROM JOHN THORNE, CHAIR OF THE PARISH COUNCIL

THE LUPPITT NEIGHBOURHOOD PLAN

AN IMPORTANT DATE FOR YOUR DIARY

I have some very good news to pass on. A date has been set for the referendum on our Neighbourhood Plan of

THURSDAY, 24 NOVEMBER 2022

The Neighbourhood Plan has been scrutinised by an independent Inspector and a final version has now been produced. This version was discussed at a Cabinet meeting held at East Devon District Council on Wednesday, 5 October, when it was unanimously approved with a recommendation that it should go forward to a parish referendum. The referendum is organised by East Devon District Council who will be in touch with all residents to explain the procedure.

It has been a very lengthy process to get to this stage so I am pleased to be able to share this news with you. The content of the Neighbourhood Plan is the result of many hours of consultation with residents. Members of the Steering Group have worked hard over the years to reach this point and the Chair, Roger Hicks, has worked tirelessly to produce the final document.

The policies contained in the Neighbourhood Plan are intended to preserve the character and tranquillity of Luppitt parish for generations to come. These policies will provide a benchmark for the Parish Council to use when considering and commenting on planning applications in the future and will have the same legal status as policies in the Local plan.

Hard copies of the Neighbourhood Plan will be available on loan, full details will be on the website www.luppittneighbourhoodplan.org.uk and members of the Steering Group Committee will be available to answer questions.

**A NEIGHBOURHOOD PLAN BELONGS TO ITS RESIDENTS.
PLEASE DO USE YOUR VOTE IN THE REFERENDUM ON
THURSDAY, 24 NOVEMBER 2022.**

LUPPITT NEIGHBOURHOOD PLAN

Members of the Steering Group Committee will be at the Village Hall to answer your questions on the following dates:

Wednesday, 9 November – 7 pm to 9 pm

Saturday, 19 November – 10 am to 12 noon

If you are unable to attend either of these sessions, please use the following contact details:

Roger Hicks – 01404 891579

Chris Ryder – 07900 260975

Michele Turner – 07525 796197

John Thorne – 01404 891412

Rosalind Buxton – 01404 861565

Clerk's report of a Meeting of Luppitt Parish Council held at Luppitt Village Hall on Tuesday, 4 October 2022 at 8 pm

Present: Cllrs Michele Turner (Vice-Chair), Beth Hooper, Paul Prettejohn, Christine Ryder, Martin Summers, Andrew Tucker, Colin Brown (EDDC), Iain Chubb (DCC), Roger Hicks (Chair of Neighbourhood Plan Steering Group) and Rosalind Buxton (Parish Clerk)

One minute's silence was held at the start of the meeting in memory of Her Majesty Queen Elizabeth II who had led by example and dedicated her life to the service of others.

Receive apologies for absence

Apologies were received from Cllrs John Thorne, Brian Pulman and David Key (EDDC).

Minutes of previous meeting

The Minutes of the meeting held on Tuesday, 6 September 2022, were unanimously agreed and signed as a correct record with the addition of the words 'and vegetables' in the item referring to the field at Pennythorne Cross (proposed by Cllr Summers and seconded by Cllr Tucker).

Declaration of Interest

There were no declarations of interest.

PLANNING

Applications (for comment, support or objection)

22/1930/FUL – Ford Farm, Luppitt, EX14 4TR – Installation of 18-20 solar panels on removable mountings in adjacent field

This planning application was discussed at length. The Parish Council has serious concerns as follows.

(a) Not enough information has been provided to establish whether this is a domestic or commercial installation. The number of panels and the location (in a field rather than on the roof) would indicate this is more than a domestic need.

(b) The emerging Neighbourhood Plan's approach to solar panels is quite clearly stated under policy CC1. Renewable energy schemes will generally be supported if they are small scale, for domestic use, roof-based and do not adversely impact on the landscape. The Parish Council disagrees with the statement in the application that the panels will be sited so as to be invisible from the road and not seen or overlooked by neighbours. The field will be clearly visible from the A30.

With the information available, the planning application would not appear to comply with policies contained in the emerging Neighbourhood Plan and, on that basis, the Parish Council objects to the planning application as it stands. The Parish Council would be inclined to support a roof-based solution for domestic only use.

22/2167/PDR – Spurtham Farm, New Road, Upottery, EX14 9QD – proposed change of use from agricultural to use class E(g)(i)

This notification of change of use from a redundant pig unit to office space under permitted development was supplied for information only.

S106 Funding

Cllr Key had received a response from his contact at EDDC. The clerk will follow up.

Neighbourhood Plan

The Chair of the Steering Group, Roger Hicks, gave an update. The Neighbourhood Plan has been examined by an independent inspector and suggested amendments have been made. The Neighbourhood Plan is due to be discussed at EDDC's cabinet meeting on 5 October with a recommendation for approval and to be formally accepted. EDDC will then organise the referendum (date to be confirmed) when every resident will have an opportunity to vote.

Publicity for Referendum

Cllr Ryder pointed out that there are a number of new residents who have moved into the parish since the Neighbourhood Plan process began and who were not even involved in the questionnaire. It was recognised that there may well be apathy amongst residents because of the lengthy process so it was felt crucial to explain clearly what the Neighbourhood Plan represents in terms of future planning applications and what it can do to preserve the tranquillity and character of the parish. Cllr Ryder suggested this could be achieved by sending out a leaflet to every household. It was agreed that the leaflet should be brief and to the point. Hard copies of the Plan could be made available in

the Village Hall. The Parish Council will urge all residents to take the opportunity to vote during the referendum.

Community Actions

Carried forward to the next meeting.

HIGHWAYS AND TRAFFIC - Update on Items to Report

There was a general discussion on the items that have been reported to Highways. Many of the items have been reported several times over a long period without any action from Highways. The clerk had written to the Neighbourhood Highways Officer about the Luppitt arm missing from two signposts, but these are not prioritised as they are not considered to be safety issues. Several items involve edge of road deterioration rather than potholes. It was agreed that the clerk would continue to keep a list of problem areas for regular review.

Parish Maintenance

Cllrs Tucker and Pulman will meet when convenient to review the list of potholes identified last year and add any new potholes that have appeared.

Sandbag requirements

None required.

Sign by bridge

The clerk will follow up with Cllr Key.

FOOTPATHS AND BRIDLEWAYS

Nothing to report from footpath wardens.

Diversion round boggy area on Footpath 14

Cllr Tucker has heard from an interested party that it would be preferable to retain the footpath as it is, rather than divert it round the boggy area as suggested.

ENVIRONMENT/COMMUNITY FACILITIES

Gate for Village Hall (Locality budget)

The Locality budget has been reinstated so the clerk will put in an application for £500 towards the cost of a gate at the Village Hall.

Play Area Signage

Cllr Summers will raise the question of signage at the next Village Hall Management Committee meeting. The clerk had obtained a quote for £70.00 plus VAT for a sign showing Luppitt Parish Council to be the operator of the site and the clerk's contact details to report damage or accidents. It was agreed to accept the quote. The Parish Council will install the sign.

Village Hall Representative

Cllr Summers agreed to remain as Parish Council representative on the Village Hall Committee.

Telephone Kiosk scheme

Carried forward to the next meeting.

Replacement oak tree

The clerk has received confirmation that the oak tree, which was presented by EDDC as part of the platinum jubilee celebrations but which has died, will be replaced.

Free Trees Project

The trees are due to be delivered 3 November. The clerk will put another request for volunteers to help plant the trees in the November issue of the Luppitt Packet.

Ukraine Concert

Cllr Ryder had asked whether the Parish Council could make a donation to the money being raised by the concert for Ukraine being held in November. The clerk explained that the Parish Council can only make a donation if the money is going to be used in the United Kingdom. Cllr Ryder agreed to check where the British Red Cross would be sending donations. If it is for aid in Ukraine, then the Parish Council cannot contribute.

Arrangements for memorial service on 27 October

The clerk will liaise with Cllrs Thorne and Pulman over arrangements.

FINANCE AND ADMINISTRATION

External Audit

The clerk confirmed that the external audit has been completed without any issues. All relevant papers have now been uploaded to the Parish Council website.

Correspondence

- Details of the Blackdown Hills Parish Network's AGM were noted.
- Information on the Civility and Respect Pledge was noted.
- A letter from EDDC about Community Asset Transfer was noted.
- A three-year plan from Vision ICT was noted.
- An invitation to complete a survey for Devon Fire & Rescue – Cllr Turner undertook to complete.

CHAIRMAN'S DISCRETION

No items.

QUESTIONS FROM THE PUBLIC

There were no questions and the meeting ended at 9.25 pm.

Date for next meeting to be held in Luppitt Village Hall at 8 pm: Tuesday, 1 November 2022

DIRECTORY

Parish Council

www.luppittparishcouncil.co.uk	
Chairman	John Thorne 01404 891412 07748 780096
Clerk	Rosalind Buxton 01404 861565 07944 625025

Village Hall

Chair	Stephen Smith 01404 892839
Secretary	Mary Hill 01404 891160
Bookings	Jean Hooper 01404 892969

Commoners' Secretary

Kevin Lockyer 07827 309229

Luppitt Neighbourhood Plan www.luppittneighbourhood.org.uk

Chair Roger Hicks 01404 891579

Consultation Christine Ryder 01404 892880

Parish Notices WhatsApp Lucy Murray 07968 900349

Luppitt Wives Mrs Joan Beckett 01404 891308

Associate Priest Jane Penn 01404 841523

revjane@dunkeswell.org.uk

Mission Community Admin Sara Gordon 07717 222404

sara@dunkeswell.org.uk

Church Warden Vacancy 01404 891324

PCC Secretary Winter Newlands 07903 032890

Luppitt Entertainments Chair Phil Smith 01404 891318

Luppitt Entertainments Sec Pat Bussey 01404 892720

Captain of Bellringers Pearl Pulman 01404 891324

Cricket Club Steve Berry 01404 891268

Hartridge Buddhist Monastery 01404 891251

Surgeries

Blackdown Dunkeswell 01823 681720

Honiton Medical Centre 01404 548544

Honiton Minor Injuries Unit 01404 540540

Devon Air Ambulance 01392 466666

East Devon District Council 01404 515616

TRIP (community transport) 01404 46529

Citizens Advice Bureau 0344 411 1444

Location of defibrillators

Village Hall EX14 4RT

Lowmans Farm, EX14 4TX (near Red Doors)



THE DABBLING DUCK AT LAKEVIEW MANOR

The Dabbling Duck Restaurant and Bar at Lakeview Manor is at the heart of our Country Manor hotel.

Our chef Jerrod has just launched a brand new menu and always serves up a fantastic range of tasty weekly specials too!

★ PICK UP A LOYALTY CARD WHEN YOU VISIT
AND GET 10% OFF ALL FOOD AND DRINK*! ★

Got a furry friend with you?

No problem, we have pet friendly areas throughout the bar and restaurant.

To book your table visit:

lakeviewmanor.co.uk/restaurant or call 01404 891287



Lakeview Manor, Dunkeswell, Honiton, Devon EX14 4SH

*Loyalty cards available for local residents. Terms and conditions apply.
See lakeviewmanor.co.uk/loyalty-card-terms for full details.