


Luppitt Packet  
July / August 2022





**SUCCESSFULLY SELLING COUNTRY  
AND VILLAGE PROPERTY IN YOUR PARISH**

**If you would like any advice, please contact your local Devon team:**

<b>HONITON</b> 01404 42456   <a href="mailto:devon@humberts.com">devon@humberts.com</a>	<b><a href="http://humberts.com">humberts.com</a></b> MOVING YOU SINCE 1842
--	--

# IS IT TIME? ....OH YES, IT IS!

After an extended break for Covid, it's time to think about the Famous Luppitt Pantomime again.

Rehearsals will start around the end of September and culminate in three performances in early February 2023.

The Luppitt Players are always looking for new talent, so anyone who might be interested in taking a small or larger part, please give me a ring before the end of July.

Steve Berry 891268

# THE LUPPITT PACKET

In this edition you'll find a special Luppitt Flower Show pull-out centrefold, nestling between photos from our Jubilee celebrations. There are more photos from that long Jubilee weekend on our Luppitt Packet website.

Also back this month are Garden Jottings from David Street (I mislaid them last month, but fortunately they're just as relevant now). As usual we bring news of many more local events over the summer, including the ever popular Fete / Flower show, and Luppitt Packet afternoon tea.

Many thanks to Marion for this months cover art.

*Trevor, Martin & Luppitt packet team*

*Serving: Luppitt, Beacon, Shaugh, Shelvin and Wick*

## CONTENTS

What's On.....	3-4	Advertisements .....	28-41
Features .....	5-18	Parish Council .....	42-45
Bulletin Board .....	17	Directory .....	46
St Mary's Church.....	19		

**COPY DATE FOR THE SEPTEMBER ISSUE IS 19<sup>th</sup> AUGUST 2022**

**editors@luppittpacket.co.uk**

Editors & Adverts	Trevor Bevan & Martin Hemsley	
Treasurer	John Hayes	01404 890114
Distribution	Mandy Riley	07817517425

## !THE LUPPITT PACKET ONLINE!

We have created a Luppitt Packet website **[www.luppittpacket.co.uk](http://www.luppittpacket.co.uk)**, so that from time-to-time we can share more colour photos and background.

Our archive of PDF copies of The Packet, dating from 2010 up to the current edition, will continue on the website [www.luppitt.net](http://www.luppitt.net), which is hosted by Peter Sage, and contains a wealth of information about Luppitt – its history, people, photos, family trees etc.

### DISCLAIMER

The Editorial Team take no responsibility for the information given or views expressed in the Luppitt Packet and will not be liable for any direct, indirect or consequential loss arising from the use of the information and advertisements contained in this publication. Although every endeavour is made to meet the requirements of advertisers, no responsibility can be accepted for failure to insert an advertisement upon any specified date. The Editorial Team reserve the right to refuse or amend any advertisement without assigning any reason.

## WHAT'S ON

### JULY

Tuesday 5 July Luppitt Parish Council Meeting, 8pm  
Wednesday 6 July Mobile Library Mountstephens, 10:45am

### AUGUST

Tuesday 2 August Luppitt Parish Council Meeting, 8pm  
Wednesday 3 August Mobile Library Mountstephens, 10:45am  
Saturday 13 August Luppitt Flower Show  
Sunday 21 August Luppitt Packet Afternoon Tea, 3-5pm, Greenway Manor  
Wednesday 31 August Mobile Library Mountstephens, 10:45am

### REGULAR EVENTS IN THE VILLAGE HALL

Village Hub Pub 7:30pm every Wednesday and Friday  
Bowls 7.30pm Mondays  
Friday Coffee / Market 11am until 1pm  
Sat 28<sup>th</sup> Coffee / Market 11am until 1pm

### Luppitt Entertainments Committee Events

Saturday 13th August, 2pm - Luppitt Flower Show and Fete  
With stalls, games, and activities for children.

We have ideas for lots of stalls but need help to run them, so we are asking village organisations to help, please!

\* You keep all the money you raise for your organisation \*  
We need help from individual volunteers too.

If you would like to take part or can help in any way please email  
Pat.Bussey27@gmail.com.

Charge for businesses or commercial organisations: £5, but you keep your takings. It would be helpful if you have your own table to bring!

#### Save the Dates:

Saturday 10th September, 7pm – End of Summer Bash  
Dancing to West Country band Hang 11 Band!

Friday 21st October 7:00 for 7:30pm – Autumn Bingo

Friday 18th November 7:30 for 8:00pm – Quiz Night  
Saturday 17th December 7:00 for 7:30pm – Christmas Party

# Flower Show & Summer Fete

## Luppitt Village Hall



Saturday  
13<sup>th</sup> August  
2:00 pm

Bar, Cream Teas, Ices

Lots of stalls, games  
and activities!

For Flower Show entry details  
please see page 22-25





## COFFEE MORNING IN AID OF THE BRITISH RED CROSS APPEAL FOR UKRAINE 15TH JUNE

The day was a big success. We were blessed with continuous sunshine and a great turnout of people. Everyone bought yummy cakes, buns, biscuits and plants, and a MOST amazing and unusual selection of "Bring and Buys"!!

An enormous thanks to our helpers – Joy, Leslie, Jacky O'M and Margaret J who all worked tirelessly. Also thanks to Brian



*A random bloke who did nothing to help organise this event (his wife Sue did it all)*



*Lesley our gatekeeper*

who auctioned a wonderful cake made by Jane which sold for £50 to the amazement of all.

Another big thank you to everyone who attended, and to those who were unable to attend, who all gave generously.

The enormous sum of £1064 was raised for Ukraine adding to the generosity of other villages across Britain.

Sue Hurst

*The Luppitt Packet has also made a £500 donation to the British Red Cross Ukraine Crisis Appeal.*

**End of Summer Bash**  
**at Luppitt Village Hall**  
**Saturday 10<sup>th</sup> September**  
**Doors open 7pm**  
**With West Country Band**  
**Hang 11 Band**



**Bar & Barbecue**

**Tickets: £6 on the night**

**Or £5 in advance from the:**

- Hub Pub on Wednesdays or Fridays
- Coffee Mornings on Fridays/Saturday

**(Ticket price excludes food and drinks)**

**Hopefully outside, but in the hall if wet!**

## GARDEN JOTTINGS

This year I've been growing radishes. It was still early March, cold with plenty of slugs and snails about, so I put them in a large pot. The seed was old too. I thought I'd just see what happened.

It's quite a few years since I've grown veggies. I used to grow broadbeans, runners, courgettes and tomatoes every year. At one time I even grew veggies up at Moorlands for equestrian Vicki and Christopher. They had a large veggie plot in front of the house with a greenhouse behind the wall. I remember doing french beans and petits pois and tomatoes in the greenhouse. That was some years ago. Recently I've only grown flowers.



Here at Catkins Jacki grows all the veggies - broadbeans, carrots, beetroots, purple sprouting, leeks, potatoes. In the polly tunnel there are tomatoes, french beans, and last year quite successfully sweet potatoes. Aubergines too in the mini greenhouse Eunice blew over. There are also runner beans, though perhaps not as prolific as Jean Gardiner's. There's plenty of soft fruit too - strawberries, raspberries, boysenberries, blackcurrants, and very successfully blueberries.

My radishes in the pot turned out very well - large red and white bulbs when you pulled them up. I should have sown a succession for later, but I've been given a packet of black Spanish radish seeds. The instructions say sow in July. I've put some in another pot in the greenhouse. We'll see what happens, I've never heard of black radishes, Spanish or not.

David Street





## POPPY CLUB

A new poppy making club started on Tuesday 7<sup>th</sup> June 10.30 - 12.30 at Luppitt Village Hall. We will be knitting or crocheting poppies for a display at St Mary's Church, Luppitt for the Remembrance Service in November.

Please come along to our new friendly group. We will have some wool, needles, hooks and patterns to get you started. Help will be available and all abilities and styles of poppies welcome.

Meetings will be held on the 1st Tuesday each month and of course there will be plenty of tea, coffee, biscuits and cake. If you can't knit or crochet but would be happy to make the tea or just to chat please come along.

Donations - if anyone wishes to make a contribution towards the cost of wool, netting etc please contact Margaret or Lesley. We can make about 30 poppies from a 100g ball costing £2. As you can gather we need 100s to make a display. Alternatively, contributions of any



spare needles, hooks or wool (double knit red, purple, black, white) most welcome

If you have any queries please contact Margaret Jarman 01404 597268 or Lesley Goode 01404 890013



## LUPPITT PACKET AFTERNOON TEA



**Saturday 21<sup>st</sup> August  
at Greenway Manor  
3pm to 5pm**

By kind permission of Louisiana and Julian

## CHARITY KNITTING

I have been sending knitted clothes, toys etc. to Knit For Peace. Instead of sending things for them in London to distribute to other charities, I am now dealing with the charity Baby Basics. This is a national charity which has local outlets. A lovely lady in Somerset is the local distributor and she collects (saving postage).

Baby Basics make up boxes for hospitals, maternity homes and where ever they are needed. They need knitted cardigans 3-6 months old, booties (no ribbons or strings), baby blankets 18" x 24", new born nappies, maternity pads, baby soap etc.

Two wonderful knitters Joy and Jean Gardiner have knitted 19 cardigans and 24 pairs of booties between them! Joy has also knitted two blankets and donated nappies.



Any more knitters out there? I can still send to Knit for Peace if anyone wants to knit large blankets, socks and mittens etc.

<https://baby-basics.org.uk>

Jacki Street

## MY OLD WALL CLOCK

It was given to me by a Miss Davey whose family ran Luppitt Mill for many years. It looks shabby but it keeps good time. It works by a weight on a cord and has to be wound up every twenty four hours.

Miss Davey had an older sister. They farmed Barn Farm. Bill Hancock senior and his family lived in a big part of the house and worked the farm for them. There was a big cider apple orchard at the back of the house. All the cider making gear was in one of the outbuildings. Bill was a good cider maker, Barn Farm was a good meeting place, with a good cider!

Miss Davey gave my sister a phonograph with cylinders which she has today and it still works.

It was said that the sisters had boyfriends that never came home from the Great War.

I had an aunty that never married she lost her sweetheart, he was a spitfire pilot. A model of his spitfire is on top of the clock.



Norman Pulman

# UPOTTERY SCHOOL

## **Jubilee Tree Planting**

I hope that all our families had a wonderful half term break and were able to see family and friends and make the most of the Jubilee Celebrations and long weekend. As you will know, on the last Thursday of half term, we planted a beech tree in honour of the Platinum Jubilee, and celebrated as a whole school, with an 'afternoon tea'. We are delighted that our school Jubilee Tree will be included in the Queen's Green Canopy, in order to mark this historic moment. Thank you to our Chair of Governors, Nicola Cornish, for coordinating the tree planting and the entry into the 'canopy'

## **Music Workshop**

It was wonderful to see our outdoor percussion set 'come to life' as the Kestrel and Kingfisher children took part in a super workshop here in school, organised for us by the Devon Music Hub. The percussion set has been a wonderful resource both during curriculum music sessions and at unstructured times, such a break, this term and the children have benefitted greatly from it. It will be leaving site, as it is needed for the Devon Music Mix Event next Friday, but it will then be coming back to school, and I know

that the children will continue to get much learning and enjoyment from it over the rest of the term. We are very grateful to the Devon Hub for all their support this year with our music provision here in school.

## **September 2022 Re-structure**

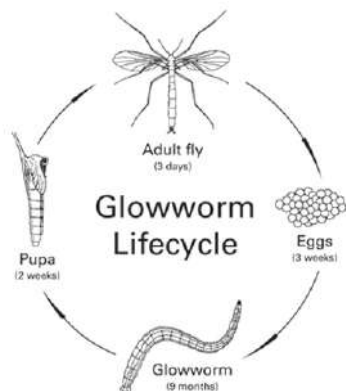
Finally, thank you to those parents and carers who were able to attend the meeting last night, or have communicated with school regarding the re-structuring of Kestrel Class. Firstly, it was lovely for parents and carers to again be able to attend a forum like this and to be able to share their thoughts with us. Secondly, I would like to thank you all for your understanding around the need for this re-structure, and for the way in which parents and carers received the information we share at the meeting. It is encouraging for us as staff to know that, our parental body, along with school staff and governors can have necessary conversations in a positive and productive way to come to a shared understanding in order to make sure that Upottery delivers the best education for its pupils.

Chris Legg

## HAVE YOU SEEN THE LIGHT?

If you are out late on a summer's evening in Luppitt you may be fortunate enough to see the lights of one or more glow worms shining in the long, untreated grass along roadside verges or footpath edges.

Once a common sight, it is thought that the number of glow worms may be in decline across England, so we are most fortunate to have the opportunity to see them here.



The glow worm, *Lampyrus noctiluca*, is not at all worm-like but is a beetle up to 25 mm long. Only the wingless female glows strongly, to attract the flying males.

Each individual female has an adult



glowing life of no more than a few weeks until she mates, since she dies soon after laying her eggs.

### Glow worms in the garden?

You may manage to attract glow worms to your garden if you leave some areas to go wild, free from herbicides, pesticides and mowers.

It is thought that males searching for glowing females may be distracted by artificial light. If you have resident glow worms try not to light your garden during the main glowing season from June to the end of August.

### National glow-worm survey

If you do see glow-worms you can report your sighting, and find lots of fascinating information, on <https://www.glowworms.org.uk>

## THE BLACKDOWN HILLS REPAIR CAFE

We are offering you all to attend our next Blackdown Hills Repair Café at the Parish Hall in Hemyock on the 23rd July 2022 from 10am until 1.0pm where you are able to bring all your items in need of repair, and enjoy a range of delicious refreshments which will be on sale from our tea room.

Stephan - Coordinator of Blackdown Hills Repair Cafe

Please do not hesitate to contact me on 07715460783, or at [sfelehner@aol.com](mailto:sfelehner@aol.com)

## A LUPPITT STROLL

In some ways the journey from child to adult is one of tragic downscaling of ambition. I started off wanting to be a star rugby player at Twickenham or an olympic swimmer, moving on to be a millionaire at 18, Ferrari, in my 20's phase before settling into the long journey toward wishing they'd speak more clearly on the news or TV dramas. Of course it's not so tragic, since what diminishes is selfishness, replaced by an awareness of your own small part in the whole. In some ways we're helplessly tiny, but when you walk it's not your tininess that strikes you, but how at home you are in this gigantic area of Luppitt and it's surroundings. How fondly we listen to the bird. How softly we close gates.

In my 20's and 30's I would never have considered myself a walker, I can remember as a youngster being frogmarched along Hadrian's wall and across bogs by an irritatingly enthusiastic geography teacher. In my former life during Naval training having to climb up and down the Brecon Beacons and Black mountains, continuously pushed on by an extremely sadistic Royal Marine colour sergeant. However one day you recall the scent of the pine needles that mat the floor of a faraway forest, you remember there was something about the long view from the highest point. You discover a yen to go somewhere like that again at your own speed.

I am heading off on a gentle stroll at my own speed, that I have been on before. It is actually very hot in Luppitt. I am heading for the locally

known Rhododendron woods for some shade, and trying to make it before the flowers disappear.

Leaving the church Car park I head up the hill, passing Ringborough cross and Mount Stephens farm towards Luppitt Cross. Carefully crossing the main road and heading pass Luppitt Common. I head down the hill towards Lakeview Manor. Just before Lakeview Manor is a public footpath on my left. I take this path. Its a meandering path and very well maintained with a forest on my right. The harsh sun light is penetrating through the trees and having a light dappling effect on the tree trunks.

It is July and young birds are starting to leave their nests as fledglings. The next few weeks will be very perilous. Many predators lie in wait for them, taking advantage of the fledglings poor co-ordination and limited flying skills. The nest that was once the young birds dwelling place is now fully consigned to its past. Most young birds, having fledged, never return to their nest, not even at night. The woods to my right are bursting with birds. I spot a young Great spotted Woodpecker, it spends its first day and night as a fledgling out in the open, and so does the a Blackbird, Blue Tit or Robin. There are many Wood Pigeons about. If birds were cars, the Wood Pigeon would be one of those heavy models like a Cadillac, that uses up a lot of fuel. They have a big tummy and an appetite to match. Appearances don't deceive, few birds have a more straightforward time than this portly





pigeon, especially in the period between July and early October, the harvest time in the arable fields of Devon. The month of July marks the start of the Wood Pigeons main breeding season. It only bothers to forage in the morning and late evening. The rest of the time is devoted to loafing around, preening and sex. To some this may sound like the ideal summer.

I arrive at a stile and enter a small field, there aren't any cattle here on this occasion. I cross the field and reach another stile, and enter the woods. The woods come in two narrow sections separated by a track with metal gates on either side. The second section is certainly the best area to see the Rhododendrons. Shafts of light are penetrating through the woods, giving a warm glow to the forest floor. I am lucky there are still many flowers showing above me. I spot an Orchid, I grew

up believing that orchids were as rare as the Holy Grail, and only Indiana Jones stood any chance of finding one. I now know only some are rare, and some are abundant in the UK. There are many butterflies about, I am certainly not a butterfly spotter, but these little creatures are as much a mark of summer as picnics, Wimbledon and hosepipe bans. I have been told openings in trees, either along tracks or in glades and clearings are the best places to spot butterflies as they enjoy the combination of shelter from the surrounding trees, warmth from the sun, and food from scrub.

It is time for me to double back, retracing my steps through the narrow woods and footpaths moving at my chosen pace for this enjoyable stroll on the edge of Luppitt.

Trevor Bevan

## LUPPITT CRICKET CLUB

Our first match this season was at home on 12<sup>th</sup> June vs. the "The Mighty Greys", a regular fixture against this friendly touring team from Brighton. As usual they had played a couple of matches earlier in the week, brought along a box a beer to share, and we expected them to be on good form.

Luppitt were first to bat with Barry Pulman and Rob Machin opening. Ignominious for Rob who was caught in the first over, but we settled with a slow but steady strike rate for 13 overs without loss. Our batsmen fired up in the 2<sup>nd</sup> half of our innings making a cracking run rate, with Buttons hitting 79 off 50 balls. Luppitt were all out for 165, so as we paused for tea we knew our bowling and fielding would have to be top notch.

The sun was shining as we took to the field after tea, but it was not a strong start, for our bowlers appeared to be a little rusty or nervous. Certainly the first few overs were expensive, but our breakthrough came in the 7<sup>th</sup>. Then came a series of spectacular catches, several wickets clean bowled and a few bowled & caught.

Our bowlers continued to improve (Rob Machin took 3 great wickets) and TMG's tail end batsmen were less



resilient than usual (they'd had more time to indulge in a refreshing glass of ale). In the end TMG were all out for 114 of 21 overs.

A thoroughly enjoyable game which could easily have turned the other way, for they won in very similar circumstances last year. We look forward to their return.

Martin Hemsley



# STRAWBERRY CAKE

500g Strawberries, hulled

## WET INGREDIENTS

200g castor sugar

125 ml Vegetable or Canola oil

2 large eggs

1 tbsp grated lemon rind

65 ml Lemon juice

250ml (260 g) plain, unsweetened yoghurt

1 tsp vanilla essence

## DRY INGREDIENTS

285g Plain flour

Scant 4 tsp baking powder

## TO SERVE

Whipped Cream

Extra strawberries

Icing sugar for dusting

## Method:

1. Preheat oven to 200C / 350F (180C fan)
2. Grease and line a 23cm / 9" cake tin with baking or parchment paper. Any type of tin is fine.

## Strawberries:

1. For inside of cake. Dice some strawberries into 1" pieces to make 1 cup (about 1/3 of the strawberries). Cut the remaining strawberries in half lengthwise.

## Cake:

1. Place the Wet ingredients into a bowl and whisk well for 1 minute.
2. Add Dry ingredients to Wet ingredients and whisk until lump free.
3. Pour half the mixture into the cake tin and smooth the surface.
4. Scatter over the diced strawberries.
5. Top with the remaining batter and smooth. Top with the halved strawberries.
6. Bake for 50 minutes or until a skewer inserted into the centre comes out clean. If you need to cook longer, cover with foil if it gets too golden.
7. Stand for 15 minutes in the cake tin before turning onto cooling rack.
8. Cool for 15 minutes +. Dust with icing sugar. Serve warm with ice cream or cool with cream.

Keeps well for 5 days. Freezes perfectly.



Lesley Goode

## Word Search

I G M P C I A U G J U Z S X I  
 O C J F F X N K G H P G J Q J  
 B A E P S U N G L A S S E S J  
 E Q H C G X R P O U A E S P J  
 A F N K R C Q A G P L W U U C  
 C R Q B G E V X K Q D C N M L  
 H I H S E U A B D U Z M N C W  
 P E W O C S V M K S V H Y T N  
 I N R V L P L A Y G R O U N D  
 C D R E W I W L Q Q V R R S S  
 N S O S A N D C A S T L E M U  
 I L T P K G U A D P Z A Q I M  
 C L S Y U N V A Y S D L L L M  
 O Q H J C J A O S S Y N V E E  
 P B O V D L O E W I O Q V S R

Playground

Sunglasses

Picnic

Beach

Sandcastle

Holiday

Summer

Sunny

Ice Cream

Friends

Smiles

## BULLETIN BOARD

Luppitt 2023 Calendars will be on sale at the Flower Show.

### Hub Pub Table Tennis

Following the successful Jubilee hub pub games night a few people have been enjoying a friendly game of Table Tennis on Wednesday and Friday evenings. Everyone's welcome to have a go, and it's fair to say there's a very wide range of ability from novice-to-ninja. Doubles games are popular, and equally entertaining to watch.

The Hub Publican



### Quaker Meeting for Worship

Spiceland Quaker Meeting Uffculme EX15 3AZ

We Meet for Worship at Spiceland every Sunday at 10.30am till 11.30am – this is a blended Meeting also available on Zoom. All are very welcome.  
Meeting ID: 865 5570 2735 Passcode: 498173

### **As part of the The Quiet Garden Movement – Spiceland Quakers are holding a Quiet Day on Saturday July 23rd 10am -4pm**

The Quiet Garden Movement nurtures access to outdoor space for prayer and reflection in a variety of settings, such as private homes, churches, retreat centres, schools and hospitals – and creates opportunities for people to experience silence, restfulness and contemplative practices, with regular quiet days and retreats being offered in many Quiet Gardens. There are over 300 Quiet Gardens worldwide.

Quiet Gardens provide hospitality and a safe, quiet space for coming home to oneself, for spiritual contemplation and reflection. <https://quietgarden.org/about/>

For more information phone Ali Dominy 07810768557 or use the “contact us” form on our website: <http://www.spicelanduffculmequakers.com/> or email [spicelandnotices@btinternet.com](mailto:spicelandnotices@btinternet.com)



## From Rev Penn's pen

Mud and mindfulness are very much on my mind this week, there are three generations living here in The Rectory and the older two grandchildren are in the middle of an activities week at school. On day one they went on 'the bear trail', they had to wear old clothes and take a complete change of clothes, a towel and a bin bag with them. They seem to have spent the day on an adventure trail that involved a lot of falling into mud, splashing through mud and I think a little mudslinging as well. They came home exhausted, plastered in mud and full of the wonder of their time and told me about the mud slide which I think was like a water slide with mud instead of water and one was very excited to tell me about having to have a shower with their clothes on, I dread to think what the clothes they brought home in the bin bag would have been like before the shower. They were able to immerse themselves in the experience completely focused on 'the bear trail' and everything that came with it, even showering with your clothes on. This is mindfulness in action and something quite topical now as its benefits are becoming better appreciated, there is a kind of stillness in completely focusing on the job in hand. I wonder whether this is one of the qualities that children have that Jesus was thinking about when he said 'Truly I tell you, whoever does not receive the kingdom of God as a little child will never enter it.' (Luke 18v17)

The current church season is Ordinary Time, doesn't sound very inspiring does it? Many of us enjoy having exciting new experiences from trying new foods to having wild adventures however if you're doing that all the time that becomes your normal, your ordinary, and you have to search out even more exotic things. The ordinary has its place if only to be a platform for the extraordinary.

I wrote some time ago about the colours for the different seasons of the church and you may remember that Ordinary Time is green. Green is also a symbol of growth and we can see a lot of it in the natural environment right now as we enjoy the summer and look forward to the harvest. I was walking to school with the grandchildren this morning and the one dawdling behind said "I'm going slowly Grandma so that I can look at nature", can't argue with that can you? She has a point and it is good to 'go slowly' sometimes and take time to notice the everyday, ordinary, things that surround us that we may not appreciate or even notice. Again the child's natural ability for mindfulness

East Devon is a beautiful place to live and we can experience beautiful vistas, interesting weather and kindly people. I hope as you read this that is your experience too, but maybe, like me one morning many years ago, you open your door look out and say to yourself 'I can see that this is a beautiful day, I have X, Y & Z to be thankful for, and I ought to be glad and appreciate it but I can't, I feel terrible, everything is wrong, it must be my fault ...'. If that's where you find yourself please talk to friends, family and your doctor about it especially if you've been feeling like that for some time, there is help to be had. I just struggled on for years thinking I was a bad mother when in reality I probably had post-natal depression and could easily have got help.

I do hope and pray that as the summer season unfolds you will make time to go slowly, to notice again the ordinary things and wonder at them. I also hope that any new or exciting things you have planned for your summer go well, whether that's climbing a mountain or having a BBQ in the garden, and that you also have time for rest and re-creation.

God bless you.

Jane



Dunkeswell Mission Community  
Dunkeswell, Broadhembury, Luppitt, Sheldon  
Upottery and Plymtree



## **Sung Evensong and Burial of the Luppitt Jubilee Time Capsule**

On Sunday 10th July we will be joined by the Dunkeswell Mission Community choir for a service of sung Evensong at 6:30pm. You are warmly invited to come along to this beautiful, traditional service. At the end of the service the time capsule will be buried in the Churchyard and refreshments will be served.

### **Change to service time**

The first Sunday Parish Communion service will be held at the later time of 11am instead of 9:30am until further notice.

### **Church opening times**

The Church building is open every week from Wednesday until Monday. It is also available to be used for Village events, exhibitions etc. All enquires to Sara on 891140.

## **OUR CHURCH SERVICES FOR JULY**

3rd	11:00 AM	Parish Communion	Revd Stephen Treeby
10th	6:30 PM	Choral Evensong	To be advised
19th	11:00 AM	Parish Communion	Revd Geoffrey Walsh
24th	11:00 AM	Family Service	Mr John White
31st	10:30 AM	Cafe Church Throgmorton Hall, Dunkeswell	Revd Jane Penn

## **OUR CHURCH SERVICES FOR AUGUST**

7th	11:00 AM	Parish Communion	Revd Stephen Treeby
14th	11:00 AM	Morning Worship	Lay Led
21st	11:00 AM	Morning Worship with baptism	Revd Jane Penn
24th	11:00 AM	Morning Worship	Lay Led

### **Tallest Sunflower Competition**

Have you planted your racing sunflower seeds distributed at the Mother's day and Easter services? If so please send us an update and/or pictures via WhatsApp to 07717 222404. Happy growing!

[www.dunkeswell.org.uk](http://www.dunkeswell.org.uk) and find us on Facebook @sixworshipstogether



**LUPPITT  
CELEBRATES  
THE QUEEN'S  
PLATINUM  
JUBILEE**





## **LUPPITT FLOWER SHOW**

To be held in LUPPITT VILLAGE HALL

SATURDAY AUGUST 13th 2022

Staging of entries 9:30am to 11am

Show opens to public 2pm

Presentation of prizes 4pm

The WALDEN PERPETUAL CHALLENGE CUP

For the highest number of points gained by an entrant in the Parish

The TD HUSSEY CUP for Section A

The BEACON PERPETUAL CUP for Section B

The RED DOORS ROSE BOWL for Section C

The BARN CUP for Section D

The PHILLIP SIMON CUP for Section E

The FLUTTERBY CUP for Sugarcraft Section F

The HARTRIDGE TANKARD for Section G

The VILLAGE HALL PERPETUAL CUPS

For Sections H and I

The DUMPDON HILL CUP for Section N



## **RULES FOR THE LUPPITT FLOWER SHOW**

All sections open to amateurs, living in or out of the Parish of Luppitt.

Entry Fees: 25p per entry. Children: 20p per entry.

Only one entry per person, per class.

Entry forms to the person below, not later than **Thursday 11th August**

Labels will be issued. No entry judged without a label.

No entries changed on the day.

All exhibits to be home-grown/made, except Section C

No exhibit to be removed before 4:30pm.

The judges decision is final.

**Entry forms** can be given to and obtained from:

Sue Wilson, Sharcombe Farm

Iris Selway, 7 Millrise

The Friday Market

---

### **LUPPITT FLOWER SHOW, ENTRY FORM.**

Please complete and hand in with fees.

Name / Child, age .....

Address .....

A1 A2 A3 A4 A5 A5 A7 A8 B1 B2 B3 B4 C1 C2

D1 D2 E1 E2 E3 E4 E5 E6 E7 E8 G1 G2 H1 H2

I1 I2 N1

Please circle classes

**PRIZES FOR ALL CLASSES: 1st: 50p, 2nd: 30p. 3rd: 20p**

**SECTION A: Hussey Cup for Vegetables**

- A 1 5 Potatoes, white
- A 2 5 potatoes, any fancy variety
- A 3 5 Peas
- A 4 5 Runner Beans
- A 5 5 Beetroot
- A 6 5 onions
- A 7 3 Sweetcorn
- A 8 5 Different Herbs in a jar

**SECTION B: Beacon Cup for Flowers**

- B 1 3 x3 Stems Annuals
- B 2 3x3 Stems Foliage
- B 3 5 Sweet Peas
- B 4 3 Roses, for scent

**SECTION C: Red Doors Rose Bowl for arranging**

- C 1 Country Bunch: Garden & Hedgerow. 15" (38cm),  
No Accessories.
- C 2 Ikibana (Japanese Style). 24" (60cm),  
No Accessories.

**SECTION D: Barn Cup for Fruit**

- D 1 5 Raspberries
- D 2 5 Strawberries

**SECTION E: Phillip Simon Cup for Homecraft**

- E 1 4 Eggs.
- E 2 Jar Gooseberry Jam
- E 3 3 Scotch Eggs
- E 4 Small Bowl Fresh Fruit Salad
- E 5 4 Sausage Rolls, flaky pastry
- E 6 Cake, as given recipe
- E 7 Knitting: Item in cable stitch
- E 8 Sewing: Make-up Bag

**SECTION G: Hartridge Tankard for Men Only**

- G 1 Bottle of Homemade Beer
- G 2 Heaviest Onion

**SECTION H: Village Hall Cup: Children 8 yrs & under**

- H 1 4 Cheese Scones
- H 2 Butterfly Picture. See notes\*

SECTION I: Village Hall Cup: Children 9-16 yrs

As Section H

SECTION N. Dumpdon Hill Cup for Adults Novelty

---

All food to be covered with cling film. All suitable items on paper plates.

---

Cake for class E6

Chocolate Gateau

4oz Butter. 4oz Sugar. 2oz SR Flower. 2oz Cocoa Powder.

2 eggs beaten. 3oz Chocolate melted.

1/2 tsp Vanilla essence. Pinch salt.

Filling:

3 oz Unsalted butter. 4oz Icing sugar.

2oz Melted chocolate.

Beat together sugar, butter, flour, cocoa, salt, until light and fluffy. Add vanilla to melted chocolate, to taste, and beat into mixture. Divide between 2 prepared sandwich tins. Bake at 350F approx 25 mins. Cool.

Beat together filling ingredients to fill cake.

---

Class H2. Butterfly Picture

Fold a A4 sheet of paper. Into the fold put a few spots of paint. Fold and press lightly.

Open to butterfly.









Est. over 75years.

## **DELVE** electrical

**Approved engineers and contractors.**

**Free estimates**

Domestic, Agricultural & Industrial Installations & Maintenance,  
Economy 7 Heating, Spares & Repairs, Motors & Generators.

**For all your electrical needs - large or small.**

Unit 1, Devonshire Way, Heathpark, Honiton. EX14 1YF.

**Tel: 01404 42958**

**Email: [info@delveelectrical.co.uk](mailto:info@delveelectrical.co.uk)**

**Website: [www.delveelectrical.co.uk](http://www.delveelectrical.co.uk)**



## **ASHCULME**

**TREE WORK | LANDSCAPING | FENCING | PAVING | MAINTENANCE**

**NPTC**  
Part of the City & Guilds Group

**QUALIFIED  
WORKFORCE**

**TREE WORK** - ALL ASPECTS OF TREE WORK INCLUDING: REMOVAL, CROWNING & LIFTING

**STUMP GRINDING** - TOTAL REMOVAL OF ANY SIZED TREE STUMP

**LANDSCAPING** - ALL PROJECTS UNDERTAKEN

**FENCING** - NEW INSTALLATIONS OR REPAIRS TO EXISTING FENCES

**TURFING** - PREPARATION & LAYING OF YOUR NEW LAWN

**PAVING** - REPAIRS TO EXISTING PAVING OR COMPLETELY NEW INSTALLATIONS

**GARDEN MAINTENANCE** - HEDGE & SHRUB TRIMMING, FRUIT TREE PRUNING & MORE

**EMERGENCY 24/7-**

**07815 146343**

[www.ashculmetreesurgeons.co.uk](http://www.ashculmetreesurgeons.co.uk)  
[info@ashculmetreesurgeons.co.uk](mailto:info@ashculmetreesurgeons.co.uk)

**FOR A FREE QUOTE FROM YOUR FRIENDLY, RELIABLE & ESTABLISHED LOCAL FIRM:**

**CONTACT  
PAUL DURMAN 01823 353302**

## PROFESSIONAL IT SUPPORT FOR BUSINESS & PERSONAL COMPUTER USERS

PC & Mac systems at all levels.  
On-Site visits or by secure Remote  
Support providing direct assistance  
or guidance with all  
aspects including  
setting up systems and  
program installation.



*Full references available.*

**Call Richard on 07801 340286**

## CUSTOM WOODWORKING, CARPENTRY & JOINERY

TRADITIONAL AND  
CAD/CNC DESIGN AND  
CONSTRUCTION.

YOUR DESIRES IN WOOD  
REALISED.

FROM BOOKSHELVES TO  
BOOKCASES. FROM WINDOWS  
TO WARDROBES AND FROM  
TRINKET BOXES TO BESPOKE  
FURNITURE.

WHEN THE JOB REQUIRES JUST  
THAT LITTLE BIT OF EXTRA  
CARE AND ATTENTION CALL:-

PETE WHITE  
07884337570



# The York Inn



Honiton Road, Churchinford. TA37RF 01823 601 333

**NOW AVAILABLE.**  
**UPSTAIRS FUNCTION ROOM WITH WIFI, PROJECTOR & SCREEN.**  
**IDEAL FOR MEETINGS, PRIVATE PARTIES**

**Country Pub offering a warm welcome.**

**Log Fire. Large selection of Ales including local brews, Games  
Room, Large screen TV.**

**Monthly Meat Draw. Lots of Special Events**  
**Good wholesome food using local ingredients. lunchtime &  
evenings.**

**Specials board & Homemade Pie Board. Takeaway.**

**Sunday Roasts. Saturday Breakfast. Parties catered for. Patio  
Area. Dogs Welcome**



Email: [theyorkinn@yahoo.com](mailto:theyorkinn@yahoo.com)

[www.yorkinn.co.uk](http://www.yorkinn.co.uk)



# CONNETTS FARM DUNKESWELL

**NOW AVAILABLE IN DUMPY BAGS**

**£75**

- Mushroom compost
- Wood chip, topsoil
- Farmyard manure
- Horse manure
- Compost
- Chicken manure
- Ornamental bark
- Wood chip mulch

## **SMALLER BAGS ALSO AVAILABLE**

approximately 25kilos - £2 per bag

All products are available in bulk by the m3

**Topsoil and compost is sieved or screened  
producing a lump free stone free product.**

**Bulk orders can be mixed**

Example 1/3 topsoil 1/3 manure  
1/3 compost, Great for raised beds

**100%  
PEAT  
FREE**

## **CONTACT US TODAY**

Heather: **07809 870230** | Nick: **07860 459745**

The Farm: **01404 891684** | Evening: **01884 841694**

**www.connetts.co.uk** | [connettsfarm@outlook.com](mailto:connettsfarm@outlook.com)



Connetts Farm

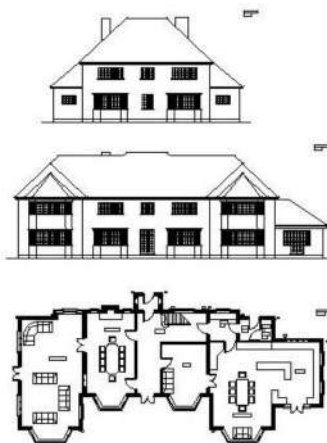


Connetts Farm

**Delivery available at cost**

## Ringborough Design and Planning

Helping you  
design your  
dream home



Guillaume Dijon

Telephone: 01823 421 049

Ringborough House  
Churchinford, Taunton TA3 7EB

Mobile: 07892 406 096

Email: [gdijon@consultant.com](mailto:gdijon@consultant.com)

## *Trees, Woodland & Countryside Management*

### **Woodland & Countryside**

*Woodland management Garden maintenance*

*Hedge maintenance / Hedgelaying & Planting*

*Fruit tree pruning*

### **Tree Work**

*Felling Crown raising Planting Crown thinning*

*Technical reductions Pollarding All other tree work*

Previous employment: Green Mantle Conservation Contractors National Trust Quantock & Blackdown Hills

Andrew Coleman Environmental Contractors



Phone Rory Proctor: 07966 982845

Email: [info@rfptrees.co.uk](mailto:info@rfptrees.co.uk)

Facebook: [rfptreesurgeons](https://www.facebook.com/rfptreesurgeons)

[www.rfptreeandlandscapeservices.co.uk](http://www.rfptreeandlandscapeservices.co.uk)



## *Lending with Heart and Mind*

East Devon District Council fund a  
not-for-profit loan scheme for homeowners and landlords\*.

**We understand the expense of maintaining your home and we work with you to take the stress out of funding repairs, improvements or adaptations.**

We see you as an individual, not a credit score. Our knowledgeable team of advisers will guide you through the process of applying for a home improvement loan.

For a no-obligation assessment or more information  
visit [www.lendology.org.uk](http://www.lendology.org.uk) or call 01823 461099

Heatherton Park Studios, Bradford on Tone, Taunton, TA4 1EU

\*subject to eligibility

## LOCAL MEAT FOR SALE

Higher Moorlands Farm

\* Grass fed beef & hogget

\* Free range pork, raised on  
British grown peas and barley

\*\*\*\*\*

For a price list please email:

[HigherMoorlandsFarm@gmail.com](mailto:HigherMoorlandsFarm@gmail.com)

Or phone

Ollie 07527627296

Eve 07807305881

## PEACE GARDEN PRODUCE

Fresh fruit and veg

Groceries

Dairy products

Cakes and Pastries made to order

Logs (Net or load)

On sale daily  
at Dove Cottage, Luppitt

Deliveries made

Tuesdays and Fridays

Please order by 3.00pm day  
before

Contact John on 07748780096 or  
01404 891412





Finding the best beer in town  
doesn't take a lot of investigating



**OTTER BREWERY**

[www.otterbrewery.com](http://www.otterbrewery.com)



Upottery, Honiton, Devon, EX14 9QT  
01404 861705  
Charity Number 1157940

Experienced & qualified staff, including 2 Early Years Teachers

Purpose built building \* secure outside play area & garden

2-5 year olds

Mon, Tue, Wed, Fri 9am-3.30pm

Thurs 9am-1pm

Parent & Toddler group Thurs 9am-1pm

To find out more or arrange a visit please contact **Abi Few on 01404 861705**  
upotterypreschool@outlook.com [www.upotterypreschoolcio.weebly.com](http://www.upotterypreschoolcio.weebly.com)

## Music and Movement or Soft Play Session for Children

Luppitt Village Hall

Wednesdays, term time only

Starts at 9.30am with approximately 45 minutes of singing and dancing

Price is only £1.00 per child, to include a drink and a biscuit,

also coffee or tea for the adults

From babies till school age. **Any enquiries contact Maria 01404 891058**



// It is our belief that a combination of good herd planning, routine monitoring and preventative medicine is the key to success on a modern farm. //



Great value medicines delivered to farm!

[mountvets.com](http://mountvets.com)

- ✓ 11 Experienced Farm Vets
- ✓ Own Lab For Quick Results
- ✓ Regular Farm Skill Courses
- ✓ Positive Approach To Farm Health Management



Wellington Wiveliscombe Broadhembury

**Tel: 01823 662286**

  
**COLIN LAYZELL**  
 CABINET MAKERS

**Makers of  
 Furniture, Kitchens  
 & Interiors**

www.colinlayzell.co.uk  
 T: 01404 891815  
 E: colin@colinlayzell.co.uk



**S A BOLAND LIMITED**  
 BUILDING CONTRACTOR & CARPENTER

We take your ideas and designs and turn them into reality.

Specialising in :

- Extensions
- Barn Conversions
- Conversions
- Home Improvements
- Kitchens & Bathroom Renovations
- Roofing
- Carpentry & General Building

Contact Stuart to discuss your requirements.

**T. 01404 42467**

**M. 07774 907733**

**saboland@btinternet.com**

**sabolandltd.com**

## ***Stuart's Sweeping Service***



*Support your local trades – use a local Chimney Sweep*

***A clean chimney is a safe chimney***

Chimney, woodburner and range cooker sweeping.

Power sweeping, Bird's nest removal.

Camera inspections, Cowls and bird spikes fitted.

Wood-burners, multi-fuel stoves and liners installed.



**07432 118318**

***Evening and weekend appointments available.***



Member of The Guild of Master Sweeps.

HETAS Approved Chimney Sweep.

HETAS Registered Installer.

Sweep Safe accredited.

Thatch trained. NFU Insured.





# **Highfield Stores & Post Office**

**Tel: 01404 891015**

*The village store offering so much more:*

Situated in the Highfield Estate, Dunkeswell, we have a huge range of groceries, fresh meat, fruit & veg, newspapers and much, much more!



**Our post office provides most services** (excluding car tax).

**You can deposit cash and cheques into almost every bank. 7 DAYS A WEEK !!**

Why not avoid the queues in the high street and enjoy a browse in our spacious, well-stocked and friendly PREMIER shop with plenty of free parking and fantastic monthly offers!!

**SHOP & POST OFFICE OPENING HOURS:  
MONDAY-SATURDAY 7AM-9PM  
SUNDAY 8AM-8PM**

Unit 5 Culme Way, Dunkeswell, Honiton, EX14 4JP  
Email: [highfieldstores14@gmail.com](mailto:highfieldstores14@gmail.com)

- Window Cleaner
- High reach hot water system
- Frames and doors all in
- Gutters/Facias Cleaned
- Patios
- Solar Panels

Excellent references if required  
For that personal service contact :

Sean Harris  
Telephone: 01404 814963  
Mobile: 07737 419077



## Plumbing & Heating

Southwoods Farm  
Ashill  
Cullompton  
Devon  
EX15 3NS

Phone: 01884 841130  
Mobile: 07860 441510

### No call out charge

- All aspects of plumbing & heating
- Boiler, Aga & Rayburn servicing
- Gas, Oil, LPG & Solid Fuel
- Bathroom installations
- Gas Landlord Safety Certificates
- Under floor heating specialists
- Free estimates
- All work guaranteed

**Contact Neil Thomas**

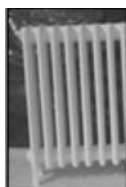


[www.njtplumbingandheating.co.uk](http://www.njtplumbingandheating.co.uk)



## Need to rejuvenate old metal objects?

We provide a variety of services ranging from powder coating to hot zinc spray and shot blasting. We keep a range of about 100 colours in stock. Most are exterior polyesters, which provide excellent durability and colour retention on gates, railings and garden furniture.



### Industrial Coating Supplies

Phone 01884 34506

Opening Hours Monday - Thursday 8 am - 5 pm or Friday 7 am - 1 pm

email [coatingsupplies@aol.com](mailto:coatingsupplies@aol.com) [www.industrialcoatingsupplies.co.uk](http://www.industrialcoatingsupplies.co.uk)

Units 1 + 2 Simmons Place, Kingsmill Industrial Estate, Cullompton EX15 1BH

**Your Advert  
here**

### MANOR ANTIQUES

#### RESTORATIONS

Specialist in Antique Furniture Restoration

Cabinet making, Inlay, Repairs, Veneering

French Polishing, Wood Finishing,

Bespoke Furniture made

CALL IAN WEDERELL

MOBILE 07732549414

OR 01404 891571

30 years in the trade

[www.manorantiquesrestorations.co.uk](http://www.manorantiquesrestorations.co.uk)

# **JOB VACANCIES**

## **RED DOORS FARM**

**GILL AND TIM HUNT**

**WOULD LIKE TO EMPLOY LOCAL CLEANERS FOR OUR  
5\* HOLIDAY COTTAGES**



**RED DOORS**  
FARM

**£12.00 PER HOUR**

**COME AND JOIN OUR SMALL AND FRIENDLY TEAM  
FRIDAYS AND/OR MONDAYS 10.00AM TO 2.15PM**

**PLEASE CALL GILL HUNT ON 01404 890067**

**OR email [info@reddoors.co.uk](mailto:info@reddoors.co.uk)**



Seacon, Luppitt, Honiton, Devon EX14 4TX



+44 (0)1404 890067  
[www.reddoors.co.uk](http://www.reddoors.co.uk)



**KEITH FARMER BUILDING SERVICES LTD**

**ARCHITECTURAL DESIGN  
PROJECT MANAGEMENT  
PLANNING & DEVELOPMENT  
BUILDING CONTRACTORS**



• RESIDENTIAL & DOMESTIC PROPERTIES • LISTED & AT RISK BUILDINGS  
• HOSPITALITY & LICENCED PREMISES • COUNTRY HOUSES & HOTELS  
• AGRICULTURAL/EQUESTRIAN • INDUSTRIAL & COMMERCIAL  
**FROM INITIAL CONCEPT THROUGH TO FINAL COMPLETION**  
**FREE INITIAL ADVICE AND ESTIMATE**

**01823 666 223**



**CIOB**



**RICS**

[info@keithfarmer.co.uk](mailto:info@keithfarmer.co.uk)



**Your friendly, local Small Animal Veterinary Practice**

**Honiton**

62 New Street  
EX14 1BZ  
01404 42750

**Hemyock**

Unit 1c Station Rd Ind Est  
EX15 3SE  
01823 681067

[www.newstreetvets.co.uk](http://www.newstreetvets.co.uk)

**Consultation by appointment only**

★ **24 hour Emergency service available** ★



Proud members of  
**Checkatrade.com**  
where reputation matters



★ **Trustpilot**



Everything  
**Plumbing  
& Heating**

Email: [info@synergisw.co.uk](mailto:info@synergisw.co.uk) Website: [synergisw.co.uk](http://synergisw.co.uk)

- |                           |                             |
|---------------------------|-----------------------------|
| ✓ <b>New Boilers</b>      | ✓ <b>Plumbing</b>           |
| ✓ <b>Heating Systems</b>  | ✓ <b>Heating Care Plans</b> |
| ✓ <b>Boiler Servicing</b> | ✓ <b>Boiler Repairs</b>     |

**24 Hour Availability**

**Call: 01404 234 363**



# Paul Prettejohn

Garden Machinery & Groundcare



Email: [paul.prettejohn@btopenworld.com](mailto:paul.prettejohn@btopenworld.com)

[www.paulprettejohn.co.uk](http://www.paulprettejohn.co.uk)

Honiton: 01404 890257

Wellington: 01823 662656



NEW PRODUCTS



USED PRODUCTS



REPAIRS



SERVICING



COLLECTION & DELIVERY



CUSTOMISATION

*Professional Gardeners  
& Landscapers*



**Goodlife**  
GARDENERS &  
LANDSCAPERS

Grass cutting, hedge trimming,  
tree surgery and planting.  
Garden waste removal service.  
Regular gardening undertaken  
throughout the year.

.....  
WE OFFER A FRIENDLY AND  
RELIABLE SERVICE  
.....

PROFESSIONAL HARD AND SOFT  
LANDSCAPING TEAM FROM  
DESIGN TO COMPLETION ALSO  
AVAILABLE  
.....

.....  
Phone Rob or Shelley on 01404 881756 or mobile 07866 672150

[www.goodlifegardeners.co.uk](http://www.goodlifegardeners.co.uk)

## **Clerk's report of a Meeting of Luppitt Parish Council held at Luppitt Village Hall on Tuesday, 7 June 2022 at 8 pm**

**Present:** Cllrs John Thorne (Chair), Michele Turner (Vice-Chair), Beth Hooper, Brian Pulman, Christine Ryder, Martin Summers, Andrew Tucker, David Key and Colin Brown (EDDC), Iain Chubb (DCC), Rosalind Buxton (Parish Clerk) and 3 members of the public

**Receive apologies for absence.** Apologies were received from Cllr Paul Prettejohn.

### **Minutes of previous meeting**

The Minutes of the meeting held on Tuesday, 3 May 2022, were unanimously agreed and signed as a correct record of that meeting (proposed by Cllr Turner and seconded by Cllr Hooper).

**Declaration of Interest.** There were no declarations of interest.

## **PLANNING**

**Applications** (for comment, support or objection)

22/1008/LBC – Little Thatch, Beacon, EX14 4TT – install flue on side (west) elevation. The Parish Council has no objection.

22/0999/FUL – Rolleshayes Barton, Wick, EX14 4TY – single storey front extension and alterations to fenestrations. This planning application was discussed and it was agreed that the Parish Council has no objection.

## **Decisions**

22/0035/FUL – Little Thatch, Beacon, EX14 4 TT – erection of shed, summerhouse, provision of new LPG tank and installation of solar panels. Approved

## **Neighbourhood Plan**

In the absence of Roger Hicks, the clerk explained that the Inspector has sent a list of 19 questions relating to the Neighbourhood Plan. Roger Hicks has drafted answers to the questions and has also liaised with Angela King at EDDC. The answers provide a fuller explanation to some of the points raised by the Inspector. All Parish Councillors were satisfied with the responses. The clerk will liaise with Roger Hicks to ensure that the Parish Council's response is given within the deadline of 14 June.

## **Community Action Group**

A meeting was held on 11 May, attended by Cllrs Ryder and Turner, Roger Hicks and the clerk, to discuss community actions. The group will report to the Parish Council on a monthly basis. It was agreed that the Green Code, headed by Cllr



Turner, will be the first active community action. The list of community actions was considered and the majority are ongoing actions initiated by the Parish Council.

The clerk will draft out protocol for contract negotiations to be followed with future community actions, drawing on experience gained from the play area project.

## **HIGHWAYS AND TRAFFIC**

Parish Highways programme - update on Items to Report

Even though the clerk had used the What3Words app when reporting road faults, some had come back with the comment that the fault could not be found. The clerk has clarified with the Neighbourhood Highways Officer that using the What3Words app is an accurate way of reporting faults. The NHO suggested that the clerk re-reports the faults and to contact him if the same comments come back.

Cllrs Pulman and Ryder confirmed that the road between Barnfield and Barn Cross had been surface dressed.

**Parish Maintenance.** Nothing to report.

## **FOOTPATHS AND BRIDLEWAYS**

Waymarker Posts. Cllr Tucker is still waiting for the waymarker posts to be delivered. The clerk will ask Ros Davies at Devon County Council whether any progress has been made on the suggested diversion of a small part of Footpath 14 to avoid the boggy area.

## **ENVIRONMENT/COMMUNITY FACILITIES**

Play Area Project and insurance. The clerk confirmed that the final payment of £2,336.40 (including VAT) has been made to Earth Wrights Ltd. The successful opening of the play area by the oldest and youngest residents of Luppitt had taken place on Sunday, 5 June, and had coincided with the Platinum Jubilee tea.

Cllr Summers kindly offered to be responsible for ongoing inspections, both visual and physical. Earth Wrights Ltd have provided details of a comprehensive maintenance schedule which the clerk will forward to Cllr Summers. The clerk will draw up a simple inspection sheet for Cllr Summers to use. The inspection report had recommended a dog ban and ownership sign. It was noted that the grass is growing through the protective matting. Cllr Summers will investigate both points.

Cllr Thorne suggested that a gate should be installed between the field and the side of the Village Hall as a deterrent to any small child running out onto the road. Cllr Chubb offered £500 from the Locality fund towards the cost and Cllrs Summers and Tucker undertook to carry out the work so the cost

will be met by the Parish Council (proposed by Cllr Tucker, seconded by Cllr Turner with all in favour). Cllr Summers undertook to raise this with the Village Hall Management Committee before any work is carried out.

### **Asset Register**

The clerk advised that the new play area will be added to the Asset Register to the value of £21,026 (excluding VAT). The clerk felt that the value of equipment at Millrise should be revised and Cllr Pulman undertook to establish the number of swings there.

### **Platinum Jubilee Celebration – lighting of the beacon**

It was agreed that the barbecue and fireworks that had accompanied the lighting of the beacon had been a great success. Special thanks were due to Tony Clapp who provided and manned one of the barbecues, Roger Hicks for playing 'Diu Regnare' on the pipes, Barbara Thorne for playing the bugle piece 'Majesty' and the National Anthem on the keyboard, Cllr Tucker for the superb bonfire and Lee Gosden for the spectacular firework display. The clerk will write on behalf of the Parish Council to Roger and Lee to thank them for the special effort they put in. The Parish Council is extremely grateful to all the other volunteers who had contributed to making it such a special evening by acting as marshals and serving the food and drink.

**Oak Tree.** The clerk handed over the plaque to mark the oak tree supplied by EDDC for the Platinum Jubilee. Cllr Pulman expressed concern that he did not think the tree would survive even though it has been regularly watered. It was agreed that it was the wrong time of year to plant the tree. Cllr Chubb assured the meeting that a replacement tree will be supplied if this one fails.

**Commemorative Capsule.** During the Sunday picnic held as part of the Platinum Jubilee celebrations, children had brought items to put in the time capsule which will be buried in the churchyard near the Millennium Bench. Items will give a snapshot of life in 2022.

### **FINANCE AND ADMINISTRATION**

**Internal Audit Report.** The internal auditor was satisfied that the financial systems and controls had been properly carried out and that the final bank reconciliation accurately reflected the year-end balance held in Luppitt Parish Council's bank account. The clerk has forwarded the internal audit report to the Parish Councillors. It was resolved unanimously to approve the internal auditor's report.

**Approval of Annual Governance Statement.** It was resolved unanimously to accept and approve the Annual Governance Statement for 2021/22. It was signed by Cllr Thorne as Chair of the meeting.

**Approval of Accounting Statements.** It was resolved unanimously to accept

and approve the Annual Governance Statements for 2021/22. It was signed by Cllr Thorne as Chair of the meeting.

Review of Standing Orders, Financial Regulations, Internal Controls, Risk Assessment and Management Register, Register of Interests. All these items were reviewed and accepted unanimously. The Risk Assessment has been updated to include the new play area. Parish Councillors present confirmed that there were no amendments to their register of interests.

EDDC have issued a new Code of Conduct for Councillors. The clerk will compare the new version with the present one in use and report back. Cllrs Chubb, Key and Brown agreed that the Parish Council is not obliged to update to the new version.

**Online banking.** The clerk has made the first payment using online banking to Earth Wrights Ltd. It was agreed that payments will be listed in the usual way on the Agenda, invoices will be agreed and signed by two signatories at the Parish Council meeting before any payment is made (proposed by Cllr Turner, seconded by Cllr Tucker). It was agreed that using online banking would be much more convenient.

**Correspondence.** Several positive messages via email and the Luppitt WhatsApp group had been received about the barbecue, bonfire and fireworks on 2 June.

### **CHAIRMAN'S DISCRETION**

Cllr Chubb has arranged for EDDC to send out a list of telephone numbers and email addresses of various departments. The clerk agreed that this was helpful and will forward the list to Parish Councillors.

Cllr Turner reported that a parishioner had spoken to her about comments that had been submitted during the EDDC consultation period for the Neighbourhood Plan.

### **QUESTIONS FROM THE PUBLIC**

A member of the public reported that the large dog kennel at Fortfield had been taken down and the dogs removed but the concrete base still remained. Cllr Key agreed to follow up.

There were no further questions and the meeting closed at 9.25 pm.

Dates for next meetings to be held in Luppitt Village Hall at 8 pm:

Tuesday, 5 July 2022

Tuesday, 2 August 2022

Tuesday, 6 September 2022

## DIRECTORY

<b>Parish Council</b>	<a href="http://www.luppittparishcouncil.co.uk">www.luppittparishcouncil.co.uk</a>	
Chairman	John Thorne	01404 891412 07748 780096
Clerk	Rosalind Buxton	01404 861565 07944 625025
<b>Village Hall</b>		
Chair	Stephen Smith	01404 892839
Secretary	Mary Hill	01404 891160
Bookings	Jean Hooper	01404 892969
<b>Commoners' Secretary</b>	Kevin Lockyer	07827 309229
Luppitt Neighbourhood Plan	<a href="http://www.luppittneighbourhood.org.uk">www.luppittneighbourhood.org.uk</a>	
Chair	Roger Hicks	01404 891579
Consultation	Christine Ryder	01404 892880
Parish Notices WhatsApp	Lucy Murray	07968 900349
Luppitt Wives	Mrs Joan Beckett	01404 891308
Associate Priest	Jane Penn <a href="mailto:revjane@dunkeswell.org.uk">revjane@dunkeswell.org.uk</a>	01404 841523
Mission Community Admin	Sara Gordon <a href="mailto:sara@dunkeswell.org.uk">sara@dunkeswell.org.uk</a>	07717 222404
Church Warden	Brian Pulman	01404 891324
PCC Secretary	Vacancy	
Luppitt Entertainments Chair	Phil Smith	01404 891318
Luppitt Entertainments Sec	Pat Bussey	01404 892720
Captain of Bellringers	Pearl Pulman	01404 891324
Cricket Club	Steve Berry	01404 891268
Hartridge Buddhist Monastery		01404 891251
<b>Surgeries</b>	Blackdown Dunkeswell	01823 681720
	Honiton Medical Centre	01404 548544
	Honiton Minor Injuries Unit	01404 540540
Devon Air Ambulance		01392 466666
East Devon District Council		01404 515616
TRIP (community transport)		01404 46529
Citizens Advice Bureau		0344 411 1444
<b>Location of defibrillators</b>		
Village Hall EX14 4RT		
Lowmans Farm, EX14 4TX (near Red Doors)		



## THE DABBLING DUCK AT LAKEVIEW MANOR

The Dabbling Duck Restaurant and Bar at Lakeview Manor in Dunkeswell offers a delicious menu of gastro-pub dishes.

Our Chef Jerrod has recently been joined by Mitchell and together they will be serving a fantastic range of tasty weekly specials and would love to invite local residents to join them.

★ **PICK UP A LOYALTY CARD WHEN YOU VISIT  
AND GET 10% OFF ALL FOOD AND DRINK\*!** ★

**Got a furry friend with you?**

No problem, we have pet friendly areas throughout the bar and restaurant.

**To book your table visit:**

[lakeviewmanor.co.uk/restaurant](http://lakeviewmanor.co.uk/restaurant) or call 01404 891287



**LAKEVIEW**  
MANOR

Lakeview Manor, Dunkeswell, Honiton, Devon EX14 4SH

\*Loyalty cards available for local residents. Terms and conditions apply.  
See [lakeviewmanor.co.uk/loyalty-card-terms](http://lakeviewmanor.co.uk/loyalty-card-terms) for full details.