

# Luppitt Packet

December 21

January 22





# **Luppitt Christmas Party**

**Three Course Meal with  
Disco, Bar and Raffle**

**Luppitt Village Hall  
Saturday**

**18<sup>th</sup> December  
7:00 for 7:30pm**

**Tickets £25 per head  
From Tracey Rosewell:  
email [dolishfarm@btinternet.com](mailto:dolishfarm@btinternet.com)  
or phone 891218 evenings  
by 11<sup>th</sup> December**

***\* Tables of 8 or 10 \****

***\* Places not confirmed until paid for \****

***\* Please specify any dietary requirements \****

# THE LUPPITT PACKET

We wish our readers, contributors, distributors, and Advertisers a very happy Christmas and a peaceful and healthy NewYear

Trevor, Martin & Luppitt packet team

A huge thank you to '**William Pollard aged 9**' for providing the December Cover Art. Congratulations on winning the December Art Competition.

*Serving: Luppitt, Beacon, Shaugh, Shelvin and Wick*

## CONTENTS

What's On.....	3	Advertisements ....	32-47, Back Cover
Features .....	6-19	Parish Council .....	49
Bulletin Board .....	24	Directory .....	54
St Mary's Church.....	29		

**COPY DATE FOR FEBRUARY ISSUE 18th JANUARY 2022**

**[luppittpacket@gmail.com](mailto:luppittpacket@gmail.com)**

Editors & Adverts	Trevor Bevan & Martin Hemsley	
Treasurer	John Hayes	01404 890114
Distribution	Mandy Riley	07817517425

## ONLINE VERSIONS OF THE LUPPITT PACKET

The website [www.luppitt.net](http://www.luppitt.net), which is hosted by Peter Sage, contains a wealth of information about Luppitt – its history, people, photos, family trees etc.

The site also holds PDF copies of The Packet dating from 2010 up to the current edition. We hope also in due course to have an easily readable electronic copy of the Packet .

### DISCLAIMER

The Editorial Team take no responsibility for the information given or views expressed in the Luppitt Packet and will not be liable for any direct, indirect or consequential loss arising from the use of the information and advertisements contained in this publication. Although every endeavour is made to meet the requirements of advertisers, no responsibility can be accepted for failure to insert an advertisement upon any specified date. The Editorial Team reserve the right to refuse or amend any advertisement without assigning any reason.

## WHAT'S ON

### DECEMBER

Sun 5 <sup>th</sup> Dec.	Make your own Christingle, 3pm.Village hall
Tue 7 <sup>th</sup> Dec	Parish Council Meeting 8pm, Village Hall 2021
Wed 8 <sup>th</sup> Dec	Mobile Library at MountStephens farm 10:45 until 11:15
Fri 17 <sup>th</sup> Dec	Back by popular demand join in at the Village Hall for a Festively-fuelled Friday coffee morning with mince pies +Sherry
Sat 18 <sup>th</sup> Dec.	Luppitt Christmas Party, Bookings and payment must be in by 11 <sup>th</sup> December please.
Sun19 <sup>th</sup> Dec.	Carols by candlelight at St. Mary's Church, 6:30pm.
Sat 25 <sup>th</sup> Dec	Similar to several successful TV shows the Hub Pub will be Open for a Christmas day special from 11am to 1pm. Maybe The similarities will end there, or perhaps Doctor Who will drop in for a pint of Otter and help you return home before you arrived
Sat 31 Dec	Impromptu 'New Year's Eve Gathering

### REGULAR EVENTS IN THE VILLAGE HALL

Village Hub Pub	7:30pm every Wednesday and Friday
Bowls	7.30pm Mondays
Friday Market	11am until 1pm 3rd, 10th, 17th , 24 <sup>th</sup> Dec 7 <sup>th</sup> , 14 <sup>th</sup> , 21 <sup>st</sup> Jan

### JANUARY

Tue 4 <sup>th</sup> Jan	Parish Council Meeting 8pm, Village Hall
Sun 9 <sup>th</sup> Jan	Songs of Praise at 11am in the Village Hall
Thu 20 <sup>th</sup> Jan	Luppitt Wives meeting, Cuckoo Cottage, 2-4pm.
Sat 29 <sup>th</sup> Jan	Saturday Market in the Village Hall, 11am to 1pm

Mobile library dates for 2022 to be confirmed

### THE BLACKDOWN HILLS REPAIR CAFÉ

We are offering you all to attend our next Blackdown Hills Repair Café at the Parish Hall in Hemyock on the **22<sup>nd</sup> January 2022 from 10am until 12.30pm**, where you are able to bring all your items for repair, and enjoy a range of delicious refreshments which will be on sale from our tea room.

For further details please contact Stephan, Coordinator of the Blackdown Hills Repair Café

Email: [sfelehner@aol.com](mailto:sfelehner@aol.com)  
Mobile: 07715460783

## **Luppitt Playground Project**

We did it!

We reached our crowdfunder target of £12,000 thanks to the generosity of Luppitt and considerable grants from East Devon District Council (£6000) and Devon Council Council (£3000). This is such an achievement and we are delighted that our hope of a playground in the spring of 2022 is in reach.

As many of you are aware playground equipment is extremely expensive. In light of this we have now also made an application to the National Lottery Awards for all scheme to raise some additional funds. We will hear about the outcome of this in early 2022.

The playground steering group will meet on the 1<sup>st</sup> of December to discuss equipment choices. We hope this will allow us to prepare to make an equipment order in February 2022 for installation in the Spring. All decisions on equipment choice will need to be approved by the Village Hall Management Committee.

Fundraising – we will be hosting Honiton Road Runners at the Village Hall on the morning of Sunday 5<sup>th</sup> of December for bacon and egg sandwiches after their runs have been completed around the parish.

We will plan to update you all in February 2022 as to our progress.

Thank you

Lucy Murray and the Playground Project Steering Group.

## **Luppitt Christmas Choir**

The inaugural rehearsal for Luppitt Christmas Choir began with smiles and laughter, with 20 members keen and eager to sing festive tunes and to raise spirits both amongst the group and in the local area. We have very much enjoyed our rehearsals and have gained a few members along the way. Our choir is far more about community spirit than anything else, but luckily we make a nice noise too!

Do come along and support us if you can. We will be doing carolling locally on Sunday 12th December, and even hope to have mulled wine and mince pies available too! We will also be part of the Carols by Candlelight service at St Mary's on Sunday 19th December.

We look forward to spreading festive joy amongst the community, and hope to inspire a few to join us next year!

Charlotte Gibbs  
Luppitt Christmas Choir Director  
[luppittchristmaschoir@gmail.com](mailto:luppittchristmaschoir@gmail.com)

The background of the entire page is decorated with colorful, swirling streamers in shades of pink, purple, blue, and yellow. Scattered throughout are several five-pointed stars in matching colors: light blue, purple, yellow, and pink. The text is centered and written in a bold, black, sans-serif font.

**You are invited to an  
informal**

**New Year's Eve**

**Get Together**

**Luppitt Village Hall**

**From 8pm**

**Bring and Share**

**Buffet Supper**

**With Bar**

## Norman's Tales – Part Two

In the late 1950s Eric Manley bought Lake Farm next to us at Greenway. Mum was in charge of milking our Jersey cows, but unfortunately she became ill. Eric suggested that his daughter Barbara could help out with the milking. She was an attractive and fun-loving girl who enjoyed riding pillion on motorbikes and dancing with the boys! Romance blossomed and Dad declared, "You'll have to marry her because I can't afford to pay her." So, in 1961, we were married in Luppitt church; I was 31 and Barbara was 20. We set up home in the lower half of the old farmhouse at Greenway Farm, and by the time Barbara was 24 we had three little boys, Peter, Christopher and Tony.

Dad had spent a lot of money on Greenway, bringing the ground back



to life and thatching the house, so he decided to sell it off in different parcels. Mum and Dad moved to Farway and we went to Bishopstown, next to the Luppitt Inn, which we rented from Albert Wright. At about this time, Barbara's father bought a farm in Cornwall with good ground, where we spent many happy

holidays.

After several years my parents decided to retire and the beautiful Jerseys were sold.

Barbara had kept in touch with a friend who lived on a sheep station in Western Australia and she fancied going out there, so I did as I was told and in 1968 we bought a couple of ten-pound assisted passage tickets under the 'Populate or Perish' policy. The friend found me a job as a maintenance manager on a neighbouring station. When I say 'neighbouring' it was actually many miles away as farms are so large out there. We lived in a lovely bungalow, but the pay was poor, and Barbara was unhappy about the boys' education, which was from the School of the Air (pupils received lessons via a high-frequency radio and could talk to a teacher). We had more friends in Perth, so we moved there and I worked on a huge arable farm. We could drill 2,000 acres in a fortnight and harvest it in a similar time. We then moved to Bridgetown where I worked with another English chap, driving lorries and bulldozers. We took it in turns to make long-distance lorry journeys, and I could be away for three weeks at a time, which was hard on Barbara, although she used her time well, working as the local Avon Lady and spending a lot of time teaching the boys to swim at the pool.

After some time Barbara was wanting to see her parents and grandparents, so we planned a six-month break in Luppitt. By this time her parents were living at Barn Farm, and we were able to rent Sharcombe Farm for the stay. The stay lasted five or six years and our daughter Mary was born during this time. When Peter and Sue Wilson married we moved into Honiton, and bought



an ex-army house at 1 Manor Crescent, where we stayed until my retirement.

I had been driving my own lorry, but business could be patchy. Barbara found an advert looking for drivers at Express Dairies in Honiton, and after a short interview and driving test they took me on, on the spot. I worked there for 12 years, taking deliveries all over the country

We retired to Seaton where we spent 20 happy years before I lost my Barbara and returned to live in Honiton to be nearer my children, grandchildren and great grandchildren. My kind neighbour and cousin, Margaret, who lives next door, still takes me to church in Luppitt and I enjoy a view of Dumpdon from my sitting-room window.



Norman's boys in Australia

Mary Hill & Jacky Omalley

*Olive would like to wish her many friends  
A very Happy Christmas and a much brighter and healthier  
New Year in 2022*



*A Donation will be made to charity in lieu of cards and postage*



## A Luppitt Stroll

December and Christmas is the perfect time for refreshing walks in the open countryside. It is the ideal antidote to yuletide stress. The Anglo Saxons had a name for it 'wint monaþ' or winter month.. After most people were converted to Christianity ' they called it 'heligh monaþ' or holy month, in celebration of the birth of Christ. Strangely today, December derives its name from the place it held in the old Roman calendar , the last in their 10 month year.

Every year lots of people in Britain hope for a white Christmas, sadly they're not supported by meteorological fact, certainly in Devon and Luppitt. I have been told that in the last century, Britain was snow covered only one Christmas in ten. However, as the first true winter month, December does bring with it the shortest day and longest night. Mist like rain is frequently turned to ice, sometimes falling as snow, and many people who stroll the lanes of Luppitt should sensibly resort to extra layers of clothing. Let's face it, we British look better in the cold , we suit woolly hats and scarves in our December, not unlike the Brazilians who suit dental floss costumes and skimpy beach wear in their December.

I am heading off on a walk , it's not 'bah humbug', but after hearing the umpteenth rendition of 'Wizzard's ' I wish it could be Christmas everyday' is enough to send me hotfooting to the lanes and hills of Luppitt. Festive fatigue can plague even the merriest among us.

Some of my favourite walking memories involve spectacular winter sunrises, all pinks ,purples and oranges streaking across the sky at a time when most people are wrapping their duvets around themselves and hunkering down for a couple more hours of shut eye.

Combine that with the light crunch of frosty grass underfoot and breathing air so cold I can feel it going in all the way to the base of my lungs. Its the perfect recipe for waking me up. Heading down the hill into the village, I pass St Mary's church and head for the lane on my left just before Dolish Farm, stomping up the hill to Hill End farm. Holly berries, mistletoe and trees garlanded with rampaging green ivy can all be enjoyed on winter walks. Hips and haws may be shrivelled, but fruit bearing holly trees are bright with rich clusters of crimson berries, adding a flash of cheerful colour to woodlands and hedgerows. Although mistletoe is less common in our countryside these days, you can occasionally spot the 'kiss me quick ' plant if you know where to look.. I have been informed that you may find it clinging up high on old apple or hawthorn trees, but rarely on oak. After taking a rest at Hill end farm with an apple , I continue along the lane heading south towards Hartridge cottage, passing Wren's before Red Doors. Overwintering birds are quick to take advantage of any food source at this time of year. Great flocks of pigeons often roam the countryside searching for any green crops to feed on for survival. Pheasants too, although not native to Britain, have hardened themselves to our winter conditions, managing to find sufficient seed, root and insect food to survive through even the harshest winter. I saunter up Dumpdon hill lane , taking a right at Dumpdon cross. I am heading for the very small National trust car park along on the Left. There is a narrow path leading up through the woods to a stile that leads onto the base of Dumpdon hill.

I Have to make a decision, go straight ahead, which will take me on a circular route around the bottom of Dumpdon hill , or turn left and climb/scramble up the steep ascent to the top of Dumpdon hill. I turn left and and climb the hill. Once I have my breath back , I head for the summit and the Trig point of Dumpdon

Its strange or even funny, our love for trig points. Usually, if someone comes along and clutters up the countryside with stuff that nature didn't put there, some corner of the outdoors community feels aggrieved. Wind turbines set the pulses racing, even benches can be contentious. However, we don't mind that between 1935 and 1962 around 6500 squat concrete pillars appeared on high points all around Britain. Trig points are ok, some people actually like them. Maybe it's the aesthetic, a simple, clean pillar. English and Welsh ones taper upwards and have cutely angled corner edges. The tapering pillar has intrigued the human eye for millennia. In some areas, especially the Yorkshire dales and Lake District they're even more scenic, as they're made from stones gathered from the very summits they stand on. The Highland version is an elegant circular column. They have a hidden complexity. A Trig pint looks like a dead, solid lump of concrete or stone, and yet the maths, physics and geometry going on inside it is slightly mind-boggling. They have their place in history. Trig points helped to create the most accurate and artistically pleasing maps the world has ever seen.

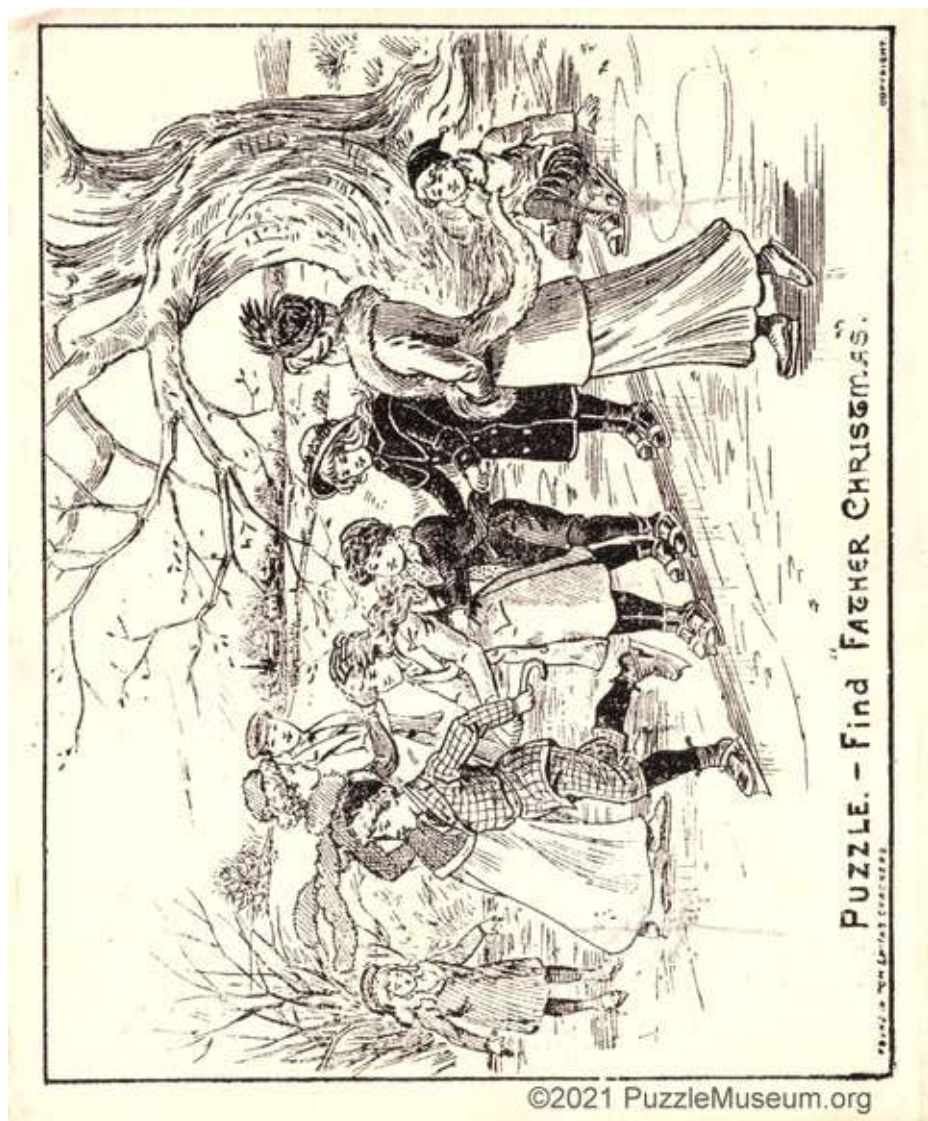
After leaning against the trig point while eating my mince pie, I decide it's time to head home. I double back towards the small national trust car park and head on towards Dumpdon cross.

Following any over-indulgence I have enjoyed my walk. The great outdoors, cool, bright and still. My legs have had a good stretch. Walking around Luppitt is seldom as refreshing as it is at Christmas, and you never know, it might even snow.

Trevor Bevan



## Puzzle Page



## CHRISTMAS WORD SEARCH

### LUPPITT

H	V	N	G	R	I	V	E	R	L	O	V	E	D
E	O	S	H	A	U	G	H	R	E	L	I	A	I
N	A	G	C	R	L	U	P	P	I	T	T	R	T
S	O	U	A	R	A	O	N	N	S	E	U	M	P
M	I	O	E	P	H	A	R	T	R	I	D	G	E
O	B	E	A	C	O	N	I	B	A	U	N	V	K
O	G	L	R	D	E	N	N	O	S	P	U	V	C
R	V	O	T	U	T	E	I	N	H	I	O	N	I
R	R	A	E	M	A	H	I	N	E	U	P	I	W
E	V	V	H	P	R	H	T	L	L	H	C	A	H
N	W	M	C	D	A	R	D	L	V	O	E	O	L
E	O	O	O	O	A	S	S	O	I	C	O	T	O
I	T	U	D	N	N	S	H	L	N	O	R	O	K
R	U	W	R	C	D	U	O	H	U	D	E	R	P

HARTRIDGE  
WICK  
BEACON  
SHAUGH  
SHELVIN  
LUPPITT  
POUND  
HENSMOOR  
RIVER LOVE  
DUMPDON

Play this puzzle online at : <https://thewordsearch.com/puzzle/2933023/>

### Christmas Western Times 28 December 1877

#### LUPPITT.

THE CHURCH CHOIR perambulated the village on Christmas-eve and following night, carrying out the old and cheerful custom of singing Christmas carols, and were heartily welcomed everywhere.

## **HONITON FOOD BANK**

The King's Centre food bank in Honiton has been in operation for 10 years. In that time we have seen the need fluctuate. Recently, with the pandemic and the rise in cost of living, we have seen the demand for food parcels increase. Every month we are making over 100 deliveries to individuals and families in Honiton and the surrounding villages.

Many of our clients need our help and support because of a change in circumstances beyond their control, perhaps they have lost their job or their relationship has broken down. Generally people only access the food bank when there is no other choice, when their children are going hungry and they are unable to afford the basics.

We provide our clients with food and toiletries during their darkest, most vulnerable days. It is a real honour to be able to offer this help to those that are truly in need. But, we couldn't do it without the generosity of the public and an excellent team of volunteers. I would like to thank everyone for donating non-perishable items to the food bank.

We receive lovely feedback from clients: "I received my food parcel today, and I just wanted to let you know how incredibly grateful I am for it. It arrived at just the right time and was very humbling which I'm also most grateful for."

Teresa Pollard  
Food Bank Manager

## **LUPPITT CHRISTMAS FOOD BANK APPEAL**

This Christmas please can you help support those in need by donating non-perishable items and Christmas treats to Honiton Food Bank?

There are donation boxes in the Village Hall (Friday coffee, hub pub etc.), at Beacon and in St. Mary's Church. If you would prefer to drop off, or need items to be collected, please call Sara on 07717 222404 to arrange a time.

Items will be delivered to the Food Bank on 17 December.

Please remember that some families are making a choice between heating their home and cooking their food so items that do not require any cooking might also be appreciated.

Thank you

## Poets Corner

Help Wanted  
By Timothy Toucher

Santa needed new reindeer.  
The first bunch had grown old.  
Dasher had arthritis;  
Comet hates the cold.  
Prancer's sick of staring  
At Dancers big behind.  
Cupid married Blitzen  
and Donders lost his mind.  
Dancer's mad at Vixen  
For stepping on his toes.  
Vixens being thrown out-  
she laughed at Rudolphs nose  
If you are a reindeer  
We hope you will apply.  
There is one tricky part  
You must know how to fly.

Submitted by  
Andrea Smith





## Willow's Big Day Out

My name is Willow. As a young lady, I like to get my own way – I can turn on the charm but also discreetly turn my hearing off when needed. 'Him and Her' think I'm a bit stupid with only a six-word vocabulary – food, walk, here, down, stay and fetch. But I'm smarter than they think so it's probably best to keep that quiet.

I thought I would tell you about my BIG EXPEDITION last Wednesday! I'd noticed Him and Her charging around changing clothes, ranting about lost keys, putting on shoes, etc., so something was up. "Right," they called, "we are off – hop in the car!"

On the way I gathered that we were off to Exeter and would park in Dixie Field – sadly no squirrels there. Her wanted to shop for 'ladies' clothes' so Him and I went for a coffee and snack. We sat outside with Him's coffee and a giant Scotch egg, which he very generously shared with me. I had quite a few admiring looks from passers-by, along with strokes and "what a lovely coat she has". A couple of rather snooty dogs didn't take kindly to their owners admiring my stunning looks – "Suck it up!" I thought.

Finally Her returned and we headed off to a place called John Lewis. It's a bit posh and we were greeted at the door by a very attractive lady in a black dress. Him and Her asked whether they could bring me into the shop. "Of course!" she said. "We all just love dogs in here." "Who doesn't?" I thought.

We took the stairs up to the ladies' clothes floor where I was immediately spotted by a very pretty buxom assistant who knelt down to give me a magnificent, soft and highly perfumed cuddle – "Why can't Him and Her smell like this?" I swooned. It was fun, I can tell you. I had a good rummage and nose round her neck and ears (she liked that), then gave her ample assets a cheeky lick. Her had finished checking the dresses, so it was time to go and I pointed the way to the escalator. That was fun: I loved the way the steps wound down, with a quick leap off the end (I nearly pulled Him over). I had another excellent sniff at the perfume counter, and a very affectionate "Au revoir" to the lady on the door before we were back on the street.

Our next stop was Waterstones. To be frank, I'm not much of a reader and prefer a good sniff to a good read. "Can we bring in a dog?" "Of course, we are all crazy about dogs – you can even go to the café." So I got lots more cuddles and admiration galore.

Him and Her then decided it was time to head home sweet home for lunch and to do some gardening. Her would plant some daffodil bulbs and I decided I could help by digging them up again. It would be fun...!

I could get used to city living. "Which smelled better," I wondered, "the goat shed or the assistants in JL?" A hard call.

K9

## **The Lesser Spotted Road Mender**

(Roadus Diggis Uppus)

These rarely seen creatures inhabit the lanes and byways in many parts of the land. They tend to flock together in low numbers, sometimes not showing themselves at all.

One of their main habits is to dig into the surface of roads, heaping piles of earth at the edges of their territory, frequenting them for varying lengths of time.

They mark their territory by putting obstacles to hide their nesting sites. During the mating season you may also observe the yellow or orange plumage on their upper body, along with their hard white heads.

Like Lyre birds, you will occasionally observe them building especially complicated structures comprising red, yellow and green lights, along with bright orange and white cone-shaped obstacles. Unfortunately, this display does not mean that you will be able to spot the creatures.

You can entice these timid creatures with their favourite foodstuff, namely well-cooked bacon between two thick slabs of bread. They also tend to drink lots of hot brown liquid. You might even be lucky enough to entice these timid creatures to feed from your hand by offering small morsels, such as Hobnob biscuits, which make a very effective lure.

These creatures frequently tend to appear and then disappear without any logical reason.

With apologies to all road menders.

Alan Bartlett

## **A HOLE IN THE WALL**

Making a hole through a 18" flint wall for a couple of 1" pipes. You know how it goes, if you're lucky it will be a hole a foot in diameter.

I started the work from both sides of the wall at floor level.

Presently I reached the centre. For some time I was rattling away at a reluctant stone in the middle of the wall, then went round to see how things were from the other side.

There was the cat with her head in the hole, in the hunting position, quivering with excitement!!!!

JS

## **Luppitt Village Hall AGM held on Thursday 28th October 2021**

The Chairman welcomed those present - 11 people in all

Apologies were received from Mrs Pat Bussey, Mrs Jean Hooper, and Mr John Thorne.

### Minutes of the Last Annual Meeting

The minutes of the last AGM held on Thursday 29th October 2021 at 7.30pm were adopted as correct.

### Matters Arising

Constitution - this matter is ongoing.

### Treasurers Report

The Treasurer reported that the Hall had been closed for most of the year due to Covid-19 restrictions.

Covid Government Grants amounting to £15,335.00 had been received, but general expenditure amounted to £9255.00 and had included improvements to the toilets, and hallway as well as the costs of electricity, and insurance. The accounts are in a generally healthy state.

### Adoption of the Accounts

Mrs Pearl Pulman proposed that the Accounts be adopted, this was seconded by Mr Phil Smith.

### Chairman's Report

The Chairman reported that although the Hall had been closed for much of the year the Entertainments Committee had put on a number of successful events including a Village Reunion, Barbecue, Bingo with a Quiz and Christmas Party to follow. Coffee mornings have resumed and The Pub Hub has been set up.

He thanked Mrs Jean Gardiner, who is retiring from the Committee after 40 years of tireless work, as well as Mrs Jean Hooper who is retiring from the Entertainments Committee, but will remain on the Management Committee. He thanked all the Management And Entertainment Committee members for their work as well as the Secretary.

## **Entertainments Sub-Committee Report**

Mr Phil Smith reported on the successful events, which had been held during the year. The Committee consists of 13 hard working members and are keen to support the new Playground Project.

He thanked Mrs Pat Bussey for her work as Secretary taking minutes and creating beautiful posters.

### **Election of Committee for 2021/22**

Parish Council	Mr Martin Summers
Parochial Church Council.	Mrs Pearl Pulman
Luppitt Wives.	Mrs J Hooper
Luppitt Commoners.	Mr Phil Smith
Bell ringers.	Mr John Thorne
Cricket Club.	Mr Steve Berry

### **Election of five more people from the floor**

Mr Steve Smith, Mr Bernard Clapp, Mrs Tracey Rosewell, Mrs Pat Bussey, and Mrs Lucy Murray were all elected onto the Committee.

### **Appointment of Auditor**

Batchelor and Co were proposed as auditors by Mr Brian Pulman and seconded by Mr Bernard Clapp.

### **Date of the next AGM. Thursday 27th October 2022**

At a meeting immediately after the AGM the following officers were elected.

Chairman.	Mr Stephen Smith
Vice Chairman.	Mrs Tracey Rosewell
Treasurer.	Mr Steve Berry
Booking Secretary	Mrs Jean Hooper
Secretary	Mrs Mary Hill
Assistant Secretary.	Mrs Lucy Murray

A more detailed set of minutes and the audited balance sheet are available on request

## Garden Jottings

Sorry about not managing any Garden Jottings last month. Our computer's been playing up. Possibly it just can't get onto BT's busy line. Actually I wrote quite a long piece about my nerines. However their time is over now, so it can wait for another day.

By December anyway the garden seasons pretty much over too, unless you're a committed galanthophile. I keep only one showy and easy winter (Nov to Jan) snowdrop. My early Daffs don't seem so early the last few years. There are always plum coloured cyclamen hiding in odd corners, but I usually keep busy doing things other than growing.

The busiest garden activity for me at this time of the year, not having a leaf blower, is sweeping up heaps of fallen leaves. Most of the trees in and around our garden have kept their leaves on unusually late. Our oaks regularly keep their leaves until December, and many other until November. Fallen deciduous leaves compost down to rich leaf mould, bits takes a couple of years or so. I have just opened up the plastic bin we store leaves in to find last year's well and truly rotted down.

Another essential job in winter is warding frost and ice off my tender or even not so hardy plants. This involves bubble wrapping the inside of the greenhouse to help our small paraffin heater do its job. Plants in the poly get covered over with fleece, bubblewrap and sheets of newspaper in the severe weather. Large tubs are dropped into empty tubs sunk in the soil.

Recently we've had several mildish winters and hopefully the 21-22 winter will follow this pattern. David Street

## Visit from Santa

Santa will be delivering gifts to the children of Luppitt on Saturday 18th December 2021 between 10 am and 1pm.



If you would like Santa to visit please text or email by 30th November to Mandy Riley on 07817 517425 or [mandyrileydevon@gmail.com](mailto:mandyrileydevon@gmail.com)



**Available to all Luppitt children or grandchildren that are visiting on that date.**

## Goulds Farm

Goulds Farm is situated in the heart of Luppitt and is currently owned by Paul and Sue Jenkins, who moved there in 2001 from Monkton.

It is unknown when the house was built, but documents in the owners possession date back to the 1700 hundreds. There is a plaque on the front of the house dating 1884 with the initials GMB. These initials refer to George Bradley Moore who lived there after he inherited the property along with Pen and Combeshead.

From 1920-1922 Robert Bevan the famous artist lived there as a "lodger".



Mary was most likely to have been born during the time that Robert Bevan was in residence. Mary later became Mary Wright and was for many years was the landlady and owner of the Luppitt Inn.

Robert Bevan produced a lithograph of Goulds Farm which he named 'The White House'. Although they do not have the original the present owners have a very nice copy which is displayed in their beautiful house.

Jacky O'Malley



## **A Quiz for December**

- 1 December – the twelfth month. So why is it called December – the tenth month?
- 2 Where are the Christmas Islands? Why are they so called?
- 3 Is Santa Claus a real person?
- 4 Where were the first recorded Christmas trees?
- 5 Where does the Christmas tree in Trafalgar Square come from?
- 6 There is a Bethlehem in Europe. Where?
- 7 A Yule log today often means a log-shaped chocolate cake. But what is or was Yule?
- 8 Who were "Three Kings of Orient"?
- 9 How did glass baubles come to be a Christmas tree decoration?
- 10 Who was King Wenceslas? What happened to him?
- 11 What is myrrh?
- 12 A favourite part of Christmas is roast potatoes. Where did potatoes come from?
- 13 Where do currants come from?
- 14 Holly berries are red. What colour are the flowers?
- 15 In recent times, who made popular the tradition of Christmas trees?
- 16 Where did turkeys come from?
- 17 On the Tenth Day of Christmas, what did my true love send to me?
- 18 Tinsel these days is made of aluminium or plastic. What was it originally made of?
- 19 Where does sherry come from?
- 20 If your children/grandchildren write to 'Father Christmas, North Pole', what will happen?

**See Answers on page 53 (DS/JS)**

## **CHRISTMAS JIGSAW CHALLENGE**

The inaugural jigsaw challenge is 1,000 piece Starry, Starry Night.  
Puzzles available from Waterstones et al.

There are no prizes but please send a picture of your completed puzzle to [luppittpacket@gmail.com](mailto:luppittpacket@gmail.com). One person chosen at random will set next year's jigsaw challenge.

Publisher: Flame Tree Publishing  
ISBN: 9781786644893

## **Closure of Luppitt Commons to Public Access - Notification of Discretionary "28 Day" Restriction under the CROW Act 2000**

Please note that the Commons (Hense Moor, Hartridge, Luppitt Common) are CLOSED TO PUBLIC ACCESS on the following dates;

- 2nd, 9th, 16th 23rd, & 30th December 2021
- 6th, 13th, 20th & 27th January 2022
- 1st February 2022

These closures are to permit rough shooting to take place over these Commons.

Further information about open access land can be found on the following Natural England website; [www.naturalengland.org.uk/openaccess](http://www.naturalengland.org.uk/openaccess)

### **LUPPITT AND HARTRIDGE COMMONS**

Commoners with grazing rights on the above Commons who wish to bid for a hay or silage plot in 2022 please advise either Phil or David by the 31st December 2021 at the latest.

Phil Smith Tel: 07984735663

David Barlow Tel: 07939083742



Joan Beckett

## Christmas Pudding

This quantity makes two 1.2 litre puddings (eight portions in each)

225g shredded suet  
125g self-raising flour  
225g white or wholemeal  
breadcrumbs  
1tsp ground mixed spice  
1 tsp ground cinnamon  
¼ tsp grated nutmeg  
450g brown sugar  
225g sultanas  
225g raisins

575g currants  
50g whole blanched almonds  
50g mixed peel  
1 apple: peeled, cored and grated  
Grated rinds of 1 orange and 1  
lemon  
4 medium eggs  
300ml stout  
4-5 tbsps rum  
1 tbsp brandy

Put the suet, flour, breadcrumbs, spices and sugar in a large bowl and mix well. Add the fruit, almonds and mixed peel. Stir in the grated apple and lemon and orange rind.

Beat together the eggs, stout and rum. Pour into the dry ingredients and mix well.

**DON'T FORGET TO MAKE A WISH.** Cover and leave overnight.

Grease the pudding basins. Add charms or coins if you wish – scald coins and wrap in greaseproof paper. Stir in carefully.

Pour mixture into the basins. Cover with greaseproof paper making a 2.5cm pleat in the centre and tie down with string. Cover tightly with foil.

Place each pudding in a large pan on a trivet or a piece of crumpled foil. Pour in enough boiling water to come  $\frac{3}{4}$  of the way up the sides. Steam for 8 hours. Top up water as necessary. When cooked, cool remove papers and prick the pudding with a skewer before brushing the tops with brandy. Re-cover the basins with clean greaseproof and store in a cool, dark, dry place. Steam for a further 2 – 4 hours before serving.

Jean Hooper



**UPOTTERY SCHOOL**  
**From the Headmaster's des**

Dear parents and carers

We have had a very positive and purposeful start to the second half of the term. Many thanks to all of those parents and carers who have responded to our Virtual Parent Carer Meetings email. It is such an important opportunity for home and school to celebrate learning and achievement and discuss how we can all work together to best support our young people with their learning steps both here in school and at home.

We were delighted to welcome back our Outdoor Group Forest School Leader to school this week. As Kestrel parents and carers will be aware, she will be working with year 4 and 5 for several weeks now, providing outdoor learning and Forest School skills in our onsite Forest School. It was great to see all the children engaging in the activities with resilience; leading their own learning so successfully and independently; and cooperating and caring for each other without exception. Well done Kestrels what a fantastic start to your Forest School learning this term.

Also, children have been continuing to learn about Diversity as part of our ongoing work around the importance of promoting Equality for All. I had the privilege to discuss with some of our older pupils the issues around the topics of racism, discrimination, prejudice and unconscious bias. I was so impressed by not only the maturity of the discussion, when talking about these issues, but moreover the children's incredible sense of respect and care for others, regardless of skin colour, ethnicity, background or any other characteristic. Their comments were thoughtful and empathetic, and I felt extremely proud of pupils in our school who have such a compassionate outlook towards making sure that everyone is treated fairly with equity, so that we can all succeed.

Thinking about this half of the term, now that the weather is getting colder, it is important to ensure that all children are coming to school with a suitable winter coat. In addition to this, it might also be helpful to reiterate the winter school uniform expectations, which are as follows: white polo-shirt, school/burgundy sweatshirt, grey/black school trousers, shorts or skirt, and black school shoes/black trainers. A school fleece, with logo, may also be worn. Jewellery is only allowed in the form of watches and studs for pierced ears. Long hair should be tied back for Health and Safety reasons. I hope this is helpful to parents and carers

Chris Legg

## **BULLETIN BOARD**

### **Congratulations to**

Martin and Louise Summers on for the birth of their daughter Katherine Louise. A lovely little sister for Izzy and Pippa

### **Luppitt Wives**

There will be no meeting in December, and the January meeting is on Thursday 20th at 2-4pm. There will be a Beetle Drive at Cuckoo cottage. Please note the time. (Joan Beckett)

### **Peace Garden**

Please see updated Advert for the Peace garden, John Thorne will be selling Christmas trees.

### **St. Mary;s Church Treasurer**

A volunteer is required to take over as the Treasurer of St. Mary's Church from 1 January 2022. Full handover will be provided.

Please contact Brian Pulman on 891324

## **LIGHT POLLUTION**

In our September edition there was an article about promoting dark skies in Luppitt.

Now the days are shorter it is a good time to check and see if you can reduce the amount of light pollution on your property and support our natural environment.

Let's reduce the negative impact of flashing Christmas lights, which when left on are detrimental for our mental health and greatly disturb the bats, birds, bees and all insects, farm animals and pets and the animals that rely on the dark skies to survive.

To appreciate the moon and stars at their best without light pollution is a truly wonderful experience.



## **Christmas Greetings**

Brian and Pearl

Would like to wish all our friends and neighbours a Happy Christmas and a Peaceful New Year

## **Lesley's Skydive**

The final total raised for St. Mary's Church, including applicable gift aid, is **£1,438.75**. Congratulations to Lesley and huge thank you to everyone who so generously sponsored her.



## **Christmas Greetings from Lesley Goode**

I would like to wish all my friends in Luppitt a very Happy Christmas.

The support I received for my Skydive was completely overwhelming and I thank you all.

I am still mourning the loss of my dear Nigel and feel unable to write cards without him by my side.

## **KEEPING OUR LANES SAFE**

Did you know that there are over 25 miles of lanes in Luppitt Parish? These are mainly bounded with hedgerows, important environments for all kinds of animals and insects but no help when trying to pass other vehicles.

Please be considerate and prepared to reverse. A low slung car may not be able to use a passing place your 4x4 can manage.

**KEEP SAFE THIS CHRISTMAS. DON'T TEXT AND DRIVE**



# Children's Christmas Art Competition

## December 2021

Thank you to all of the children who entered the competition, we had 25 entries. We asked two of our local artists Julia and Vanessa to pick the cover for the December issue of the Luppitt Packet. These are their comments:-

Most artists aspire to paint with the freedom of children. we found it difficult to pick a winning design because they all deserved to win.

We felt very pleased to see so much varied art. We hope all the children will continue to enjoy their creativity and have a happy, home made, plastic free Christmas!



Vanessa and Julia

Children entering the competition ranged from age 4 to 12 and you can see the talent in their entries on the following pages.





# St Mary's Church, Luppitt



## CHURCH SERVICES IN DECEMBER AND JANUARY

<b>5th</b>	3 PM	Christingle Service, Village Hall	Rev J Penn
<b>12th</b>	11 AM	All Age Worship	Lay Led
<b>19th</b>	6:30 PM	Carols by Candlelight	Lay Led
<b>24th</b>	4 PM	Crib Service	Lay Led
<b>25th</b>	<b>11 AM</b>	<b>Christmas Service</b>	<b>Rev J Penn</b>

On Sunday 26<sup>th</sup> December there will be a service of Holy Communion at St. Andrew's Broadhembury open to all.

<b>9th</b>	11 AM	Songs of Praise, Village Hall	Lay Led
<b>16th</b>	11 AM	Holy Communion	Rev J Penn
<b>23rd</b>	11 AM	Informal Worship	Lay Led

On Sunday 30<sup>th</sup> January Rev Jane will conduct services at St. Nicholas Dunkeswell at 9:30 AM and at St. Mary the Virgin, Upottery at 11 AM



## Christmas at St Mary's

Please join us for our Christmas services

**Sunday 19<sup>th</sup> December at 6:30pm**

Carols by Candlelight

Followed by mulled wine and mince pies

**Christmas Eve at 4:00pm**

Crib service for children of all ages –

Children are invited to dress up!

**Christmas Day at 11:00am**

Holy Communion

Visit [www.dunkeswell.org.uk](http://www.dunkeswell.org.uk) and find us on Facebook @sixworshipstogether

## From REV PENN'S PEN

**How do you think God spends Christmas day? Colleen aged 8 thinks 'It's the happiest day of the year for God because His first son was born on that day and parents always like to remember things like that'.**

From 'The best Christmas presents are wrapped in heaven' compiled by David Heller and Elizabeth Heller

November and December seem to be months dominated by 'remembering'. As I write this we have just had the festival of Remembrance with Armistice Day on Thursday November 11th and Remembrance Sunday on Nov 14th, times when we gather in our communities to remember those who were and still are prepared to fight for justice, peace and liberty as well as all who have died in the service of mankind. They are times when we look back, gather our thoughts for where we are now and then look ahead.

By our very remembering we undertake a responsibility to share in the living and dying for peace. We meet people on a daily basis who bring peace into people's lives just by being who they are –the gentle person we meet at work, on the train; the person who lets us out into a stream of traffic so that we don't have to fight our way in. Peace can be shared in so many ways –and received! It cannot be given without being received, accepted and used. We can use the peace given by others to reflect in the way we deal with all people, in the words of the poem by David Robert: there will be peace 'when attitudes change and when self-interest becomes common interest.'

The birth of a baby is perhaps the one time when we can all unite in the wonder of new life, the vulnerability of the new baby, the implicit trust in us to provide all that a new baby needs. The new baby is the symbol of our future; and is our future! As we wonder we are suddenly united in our vulnerability, touched by this miracle of love and life and focussed in our love and concern for the wellbeing of this spark of new life. This Christmas may we be prepared to wonder anew at the spark of the new life being born into the world –the Christ Child who came in vulnerability and trust. May we let that spark of life lighten our lives so that in looking back to that first Christmas our lives are enlightened by the message of God's love which he brought for each of us not just for Christmas day but for always!

A very happy Christmas to you all.

Jane.



# Make your own Christingle

Date: Sunday 5th December

Time: 3pm

Venue: Luppitt Village Hall

Refreshments provided

Voluntary donations to the Children's Society



For further details please contact Sara on 07717 222404

## **Quaker Meeting for Worship**

Spiceland Quaker Meeting Uffculme EX15 3AZ

We Meet for Worship at Spiceland every Sunday at 10.30am till 11.30am – this is a blended Meeting also available on Zoom –

All are very welcome.

Meeting ID: 865 5570 2735 Passcode: 498173

For more information phone Ali Dominy 07810768557 or use the “contact us” form on our website:  
<http://www.spicelanduffculmequakers.com/> or email [spicelandnotices@btinternet.com](mailto:spicelandnotices@btinternet.com)

‘Asylum seekers’ Poem by Rainbows Children’s Meeting – published in ‘The Friend Magazine’  
December 2020.

Mother and child are fleeing in the night.  
The brutal soldiers search for them behind,  
And in the sky ahead, the stars are bright

The tired donkey follows Joseph’s light,  
Cautiously stepping like a man who’s blind;  
Mother and child are fleeing in the night.

And Joseph worries; he’s far out of sight  
Of home and workshop, friends and neighbours kind;  
But in the sky ahead, the stars are bright.

And Mary cries for other children’s fright  
In Bethlehem, where killers try to find  
The child and mother fleeing in the night.

And all the time the baby, eyes shut tight,  
Rocked by the donkey, never cried or whined;  
Mother and child are fleeing in the night.  
And in the sky ahead, the stars are bright.



# **The York Inn**



Honiton Road, Churchinford. TA37RF 01823 601 333

**NOW AVAILABLE.  
UPSTAIRS FUNCTION ROOM WITH WIFI, PROJECTOR & SCREEN.  
IDEAL FOR MEETINGS, PRIVATE PARTIES**

**Country Pub offering a warm welcome.**

**Log Fire. Large selection of Ales including local brews, Games  
Room, Large screen TV.**

**Monthly Meat Draw. Lots of Special Events  
Good wholesome food using local ingredients. lunchtime &  
evenings.**

**Specials board & Homemade Pie Board. Takeaway.**

**Sunday Roasts. Saturday Breakfast. Parties catered for. Patio  
Area. Dogs Welcome**



Email: [theyorkinn@yahoo.com](mailto:theyorkinn@yahoo.com)

[www.yorkinn.co.uk](http://www.yorkinn.co.uk)





# CONNETS FARM

CONNETS FARM, DUNKESWELL, HONITON, EX14 4QZ

## Locally Grown Christmas Trees for sale

Christmas trees both traditional & non-drop varieties from 3 to 30 feet

**Cut, potted and rooted. - Dig or cut your own!**

We also have selection of **tree stands, wreaths, garlands, mistletoe, holly, turkeys** and other local produce.

Come down and play in the snow, see the farm animals and the larger than life Father Christmas!



Complimentary  
Mince Pies,  
Mulled wine  
& Chocolates

Trees Starting  
from just  
£5



Nick: 07860 459745  
Heather: 07809 870230  
The Farm: 01404 891684  
Evenings: 01884 841694

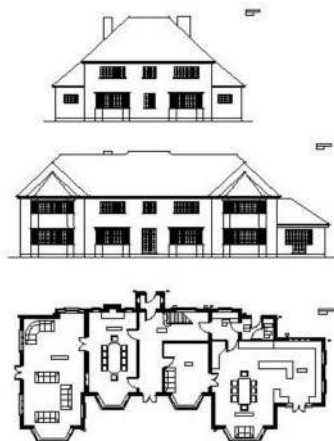
Website: [www.connetts.co.uk](http://www.connetts.co.uk)  
Email: [connettsfarm@outlook.com](mailto:connettsfarm@outlook.com)  
Opening Times: 18th November: 9am - 6pm  
9th & 16th December: 9am - 9pm



**WE CAN RECYCLE YOUR TREE AFTER CHRISTMAS**

**Ringborough  
Design and  
Planning**

Helping you  
design your  
dream home



Guillaume Dijon

Telephone: 01823 421 049

Ringborough House

Mobile: 07892 406 096

Churchinford, Taunton TA3 7EB

Email: [gdijon@consultant.com](mailto:gdijon@consultant.com)

## *Trees, Woodland & Countryside Management*

### **Woodland & Countryside**

*Woodland management Garden maintenance*

*Hedge maintenance / Hedgelaying & Planting*

*Fruit tree pruning*

### **Tree Work**

*Felling Crown raising Planting Crown thinning*

*Technical reductions Pollarding All other tree work*

Previous employment: Green Mantle Conservation Contractors National Trust Quantock & Blackdown Hills

Andrew Coleman Environmental Contractors



Phone Rory Proctor: 07966 982845

Email: [info@rfptrees.co.uk](mailto:info@rfptrees.co.uk)

Facebook: [rfptreesurgeons](https://www.facebook.com/rfptreesurgeons)

[www.rfptreeandlandscapeservices.co.uk](http://www.rfptreeandlandscapeservices.co.uk)



## *Lending with Heart and Mind*

East Devon District Council fund a  
not-for-profit loan scheme for homeowners and landlords\*.

**We understand the expense of maintaining your home and we work with you to take the stress out of funding repairs, improvements or adaptations.**

We see you as an individual, not a credit score. Our knowledgeable team of advisers will guide you through the process of applying for a home improvement loan.

For a no-obligation assessment or more information  
visit [www.lendology.org.uk](http://www.lendology.org.uk) or call 01823 461099

Heatherton Park Studios, Bradford on Tone, Taunton, TA4 1EU

\*subject to eligibility

## LOCAL MEAT FOR SALE

Higher Moorlands Farm

\* Grass fed beef & hogget

\* Free range pork, raised on  
British grown peas and barley

\*\*\*\*\*

For a price list please email:

[HigherMoorlandsFarm@gmail.com](mailto:HigherMoorlandsFarm@gmail.com)

Or phone

Ollie 07527627296

Eve 07807305881

## PEACE GARDEN PRODUCE

Fresh fruit and veg

Groceries

Dairy products

**AND Christmas trees**

Cakes and Pastries made to order

Logs (Net or load)

On sale daily

at Dove Cottage, Luppitt

Deliveries made

Tuesdays and Fridays

Please order by 3.00pm day  
before

Contact John on 07748780096 or  
01404 891412



Finding the best beer in town  
doesn't take a lot of investigating



**OTTER BREWERY**  
[www.otterbrewery.com](http://www.otterbrewery.com)



Upottery, Honiton, Devon, EX14 9QT  
01404 861705  
Charity Number 1157940

Experienced & qualified staff, including 2 Early Years Teachers  
Purpose built building \* secure outside play area & garden

2-5 year olds

Mon, Tue, Wed, Fri 9am-3.30pm  
Thurs 9am-1pm

Parent & Toddler group Thurs 9am-1pm

To find out more or arrange a visit please contact **Abi Few on 01404 861705**  
[upotterypreschool@outlook.com](mailto:upotterypreschool@outlook.com) [www.upotterypreschoolcio.weebly.com](http://www.upotterypreschoolcio.weebly.com)

## Music and Movement or Soft Play Session for Children

Luppitt Village Hall

Wednesdays, term time only

Starts at 9.30am with approximately 45 minutes of singing and dancing

Price is only £1.00 per child, to include a drink and a biscuit,  
also coffee or tea for the adults

From babies till school age. **Any enquiries contact Maria 01404 891058**



// It is our belief that a combination of good herd planning, routine monitoring and preventative medicine is the key to success on a modern farm. //



Great value medicines delivered to farm!

[mountvets.com](http://mountvets.com)

- ✓ 11 Experienced Farm Vets
- ✓ Own Lab For Quick Results
- ✓ Regular Farm Skill Courses
- ✓ Positive Approach To Farm Health Management



Wellington Wiveliscombe Broadhembury

**Tel: 01823 662286**

  
**COLIN LAYZELL**  
 CABINET MAKERS

**Makers of  
 Furniture, Kitchens  
 & Interiors**

www.colinlayzell.co.uk  
 T: 01404 891815  
 E: colin@colinlayzell.co.uk



**S A BOLAND LIMITED**  
 BUILDING CONTRACTOR & CARPENTER

We take your ideas and designs and turn them into reality.

Specialising in :

- Extensions
- Barn Conversions
- Conversions
- Home Improvements
- Kitchens & Bathroom Renovations
- Roofing
- Carpentry & General Building

Contact Stuart to discuss your requirements.

T. 01404 42467  
 M. 07774 907733  
 saboland@btinternet.com  
 sabolandltd.com

## ***Stuart's Sweeping Service***



Support your local trades – use a local Chimney Sweep

***A clean chimney is a safe chimney***

Chimney, woodburner and range cooker sweeping.

Power sweeping, Bird's nest removal.

Camera inspections, Cows and bird spikes fitted.

Wood-burners, multi-fuel stoves and liners installed.



**07432 118318**

***Evening and weekend appointments available.***



Member of The Guild of Master Sweepers.

HETAS Approved Chimney Sweep.

HETAS Registered Installer.

Sweep Safe accredited.

Thatch trained. NFU Insured.







# **Highfield Stores & Post Office**

**Tel: 01404 891015**

*The village store offering so much more:*

Situated in the Highfield Estate, Dunkeswell, we have a huge range of groceries, fresh meat, fruit & veg, newspapers and much, much more!



**Our post office provides most services** (excluding car tax).

**You can deposit cash and cheques into almost every bank. 7 DAYS A WEEK !!**

Why not avoid the queues in the high street and enjoy a browse in our spacious, well-stocked and friendly PREMIER shop with plenty of free parking and fantastic monthly offers!!

**SHOP & POST OFFICE OPENING HOURS:  
MONDAY-SATURDAY 7AM-9PM  
SUNDAY 8AM-8PM**

Unit 5 Culme Way, Dunkeswell, Honiton, EX14 4JP

Email: [highfieldstores14@gmail.com](mailto:highfieldstores14@gmail.com)



- Window Cleaner
- High reach hot water system
- Frames and doors all in
- Gutters/Facias Cleaned
- Patios
- Solar Panels

Excellent references if required  
For that personal service contact :

Sean Harris  
Telephone: 01404 814963  
Mobile: 07737 419077



## Plumbing & Heating

Southwoods Farm  
Ashill  
Cullompton  
Devon  
EX15 3NS

Phone: 01884 841130  
Mobile: 07860 441510

### No call out charge

- All aspects of plumbing & heating
- Boiler, Aga & Rayburn servicing
- Gas, Oil, LPG & Solid Fuel
- Bathroom installations
- Gas Landlord Safety Certificates
- Under floor heating specialists
- Free estimates
- All work guaranteed

**Contact Neil Thomas**



Reg. 025221C



Reg. C4016



Reg. 215088



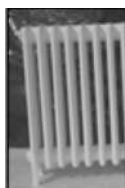
Reg. 4629



[www.njtplumbingandheating.co.uk](http://www.njtplumbingandheating.co.uk)

# Need to rejuvenate old metal objects?

We provide a variety of services ranging from powder coating to hot zinc spray and shot blasting. We keep a range of about 100 colours in stock. Most are exterior polyesters, which provide excellent durability and colour retention on gates, railings and garden furniture.



## Industrial Coating Supplies

Phone 01884 34506

Opening Hours Monday - Thursday 8 am - 5 pm or Friday 7 am - 1 pm

email [coatingsupplies@aol.com](mailto:coatingsupplies@aol.com) [www.industrialcoatingsupplies.co.uk](http://www.industrialcoatingsupplies.co.uk)

Units 1 + 2 Simmons Place, Kingsmill Industrial Estate, Cullompton EX15 1BH

## CUSTOM WOODWORKING, CARPENTRY & JOINERY

TRADITIONAL AND  
CAD/CNC DESIGN AND  
CONSTRUCTION.

YOUR DESIRES IN WOOD  
REALISED.

FROM BOOKSHELVES TO  
BOOKCASES. FROM WINDOWS  
TO WARDROBES AND FROM  
TRINKET BOXES TO BESPOKE  
FURNITURE.

WHEN THE JOB REQUIRES JUST  
THAT LITTLE BIT OF EXTRA  
CARE AND ATTENTION CALL:-

PETE WHITE  
07884337570

## MANOR ANTIQUES

### RESTORATIONS

Specialist in Antique Furniture Restoration

Cabinet making, Inlay, Repairs, Veneering

French Polishing, Wood Finishing,

Bespoke Furniture made

CALL IAN WEDERELL

MOBILE 07732549414

OR 01404 891571

30 years in the trade

[www.manorantiquesrestorations.co.uk](http://www.manorantiquesrestorations.co.uk)

# THE SIDMOUTH ARMS UPOTTERY

## OPEN ALL DAY



**Great Drinks!**

**Great Food!**

**Great Choice!**

Extensive daytime and evening menus using locally sourced ingredients, freshly prepared and cooked on the premises  
Food available from 12noon until 9pm weekdays (8pm Sundays)  
Book early for our ever-popular Sunday Roast (12 until 5)

### **Function Room Available**

For your meeting, training day  
or group presentation.

Equipped with audio-visual facilities  
including a hi-def projector and  
large drop-down screen.

### **Outside Functions Catered For**

For your wedding or other special  
event, we can supply full catering  
and bar facilities to suit your  
requirements. Any number of  
people catered for.

Upottery, Honiton, Devon. EX14 9PN Telephone 01404861252

[www.sidmoutharms.com](http://www.sidmoutharms.com)

[sidmoutharms@gmail.com](mailto:sidmoutharms@gmail.com)



Sidmouth Arms



# SPARKLES

## CLEANING • SERVICES

*For a friendly, personal service*

- Weekly / fortnightly cleans
- Spring cleans
- Deep cleans • House moves

Please call Tracy for an informal chat

**Phone: 01404 891505**

**Mobile: 07720 321 413**

tracy@sparkleshoniton.co.uk  
www.sparkleshoniton.co.uk



**Insured • DBS/CRB Checked • References**

# **JOB VACANCIES**

## **RED DOORS FARM**

**GILL AND TIM HUNT**

**WOULD LIKE TO EMPLOY LOCAL CLEANERS FOR OUR  
5\* HOLIDAY COTTAGES**



**£11.00 PER HOUR**

**COME AND JOIN OUR SMALL AND FRIENDLY TEAM**

**FRIDAYS AND/OR MONDAYS 10.00AM TO 2.15PM**

**PLEASE CALL GILL HUNT ON 01404 890067**

**OR email [info@reddoors.co.uk](mailto:info@reddoors.co.uk)**



# **KEITH FARMER BUILDING SERVICES LTD**

**ARCHITECTURAL DESIGN  
PROJECT MANAGEMENT  
PLANNING & DEVELOPMENT  
BUILDING CONTRACTORS**



• RESIDENTIAL & DOMESTIC PROPERTIES • LISTED & AT RISK BUILDINGS  
• HOSPITALITY & LICENCED PREMISES • COUNTRY HOUSES & HOTELS  
• AGRICULTURAL/EQUESTRIAN • INDUSTRIAL & COMMERCIAL

**FROM INITIAL CONCEPT THROUGH TO FINAL COMPLETION  
FREE INITIAL ADVICE AND ESTIMATE**

**01823 666 223**



**CIOB**



**RICS**

[info@keithfarmer.co.uk](mailto:info@keithfarmer.co.uk)



**Your friendly, local Small Animal Veterinary Practice**

**Honiton**

62 New Street  
EX14 1BZ  
01404 42750

**Hemyock**

Unit 1c Station Rd Ind Est  
EX15 3SE  
01823 681067

[www.newstreetvets.co.uk](http://www.newstreetvets.co.uk)

**Consultation by appointment only**

★ **24 hour Emergency service available** ★



Proud members of  
**Checkatrade.com**  
where reputation matters



★ **Trustpilot**



**Everything  
Plumbing  
& Heating**

Email: [info@synergisw.co.uk](mailto:info@synergisw.co.uk) Website: [synergisw.co.uk](http://synergisw.co.uk)

- |                           |                             |
|---------------------------|-----------------------------|
| ✓ <b>New Boilers</b>      | ✓ <b>Plumbing</b>           |
| ✓ <b>Heating Systems</b>  | ✓ <b>Heating Care Plans</b> |
| ✓ <b>Boiler Servicing</b> | ✓ <b>Boiler Repairs</b>     |

**24 Hour Availability**  
**Call: 01404 234 363**





# Paul Prettejohn

Garden Machinery & Groundcare



Email: [paul.prettejohn@btopenworld.com](mailto:paul.prettejohn@btopenworld.com)

[www.paulprettejohn.co.uk](http://www.paulprettejohn.co.uk)

Honiton: 01404 890257

Wellington: 01823 662656



NEW PRODUCTS



USED PRODUCTS



REPAIRS



SERVICING



COLLECTION & DELIVERY



CUSTOMISATION

*Professional Gardeners  
& Landscapers*



**Goodlife**  
GARDENERS &  
LANDSCAPERS

Grass cutting, hedge trimming,  
tree surgery and planting.  
Garden waste removal service.  
Regular gardening undertaken  
throughout the year.

.....  
WE OFFER A FRIENDLY AND  
RELIABLE SERVICE

.....  
PROFESSIONAL HARD AND SOFT  
LANDSCAPING TEAM FROM  
DESIGN TO COMPLETION ALSO  
AVAILABLE

.....  
Phone Rob or Shelley on 01404 881756 or mobile 07866 672150  
[www.goodlifegardeners.co.uk](http://www.goodlifegardeners.co.uk)



Est. over 75years.

## **DELVE** electrical

**Approved engineers and contractors.**

**Free estimates**

Domestic, Agricultural & Industrial Installations & Maintenance,  
Economy 7 Heating, Spares & Repairs, Motors & Generators.

**For all your electrical needs - large or small.**

Unit 1, Devonshire Way, Heathpark, Honiton. EX14 1YF.

**Tel: 01404 42958**

**Email: info@delveelectrical.co.uk**

**Website: www.delveelectrical.co.uk**



## **ASHCULME**

**TREE WORK | LANDSCAPING | FENCING | PAVING | MAINTENANCE**



**TREE WORK** - ALL ASPECTS OF TREE WORK INCLUDING: REMOVAL, CROWNING & LIFTING

**STUMP GRINDING** - TOTAL REMOVAL OF ANY SIZED TREE STUMP

**LANDSCAPING** - ALL PROJECTS UNDERTAKEN

**FENCING** - NEW INSTALLATIONS OR REPAIRS TO EXISTING FENCES

**TURFING** - PREPARATION & LAYING OF YOUR NEW LAWN

**PAVING** - REPAIRS TO EXISTING PAVING OR COMPLETELY NEW INSTALLATIONS

**GARDEN MAINTENANCE** - HEDGE & SHRUB TRIMMING, FRUIT TREE PRUNING & MORE

**EMERGENCY 24/7-**

**07815 146343**

[www.ashculmetreesurgeons.co.uk](http://www.ashculmetreesurgeons.co.uk)  
[info@ashculmetreesurgeons.co.uk](mailto:info@ashculmetreesurgeons.co.uk)

**FOR A FREE QUOTE FROM YOUR FRIENDLY, RELIABLE & ESTABLISHED LOCAL FIRM:**

**CONTACT  
PAUL DURMAN 01823 353302**

Dear Sir / Madam,

I run a new buy-local business support scheme from Devon County Council called Made in Devon. We are trying to let more businesses know about the scheme so that they can join and benefit from promotion and business support services. We have funding to provide free membership of the scheme for the first year to 125 Devon-based businesses so I was hoping you might be able to include some information about the scheme in your parish newsletters and other communications channels. And of course if you know any great local businesses who you think should join, please do forward this information to them. I have attached an image and some text below. Please do not hesitate to contact me if you would like any further information.

Yours faithfully  
Melissa

Want to see your business grow?

Made in Devon is a new 'buy-local' business support scheme from Devon County Council and is looking to help 125 businesses a year with free scheme membership. Benefits include Trading Standards advice and being part of major promotional campaigns that will make the most of new consumer trends to support local, independent businesses and artisans.

To qualify you need to be a Devon-based business who takes pride in supporting other local companies and goes out of your way to use materials and ingredients produced in Devon. To find out more visit [www.madeindevon.org.uk](http://www.madeindevon.org.uk). Made in Devon is part of the well-established Trading Standards Buy with Confidence scheme.

Please note - the free membership offer does not include businesses based in Plymouth and Torbay. However these businesses can still join the scheme. This email has been sent to the Devon County Council Parish Council & Clerks contact list.

Kind regards



Melissa Irace  
Project Officer, Made in Devon  
01392 382274

[www.madeindevon.org.uk](http://www.madeindevon.org.uk)  
[Made in Devon | Facebook](#)  
[Made in Devon Twitter](#)

Please note - I don't work on Fridays

## **Clerk's report of a Meeting of Luppitt Parish Council held at Luppitt Village Hall on Tuesday, 2 November 2021 at 8 pm**

**Present:** Cllrs Michele Turner (Vice-Chair), Beth Hooper, Brian Pulman, Martin Summers, Andrew Tucker, Rosalind Buxton (Parish Clerk) and one member of the public

### **Receive apologies for absence**

Apologies were received from Cllrs John Thorne, Christine Ryder, David Key and Colin Brown (EDDC), Iain Chubb (DCC)

### **Minutes of previous meeting**

The Minutes of the meeting held on Tuesday, 5 October 2021, were unanimously agreed and signed as a correct record of that meeting with an amendment to item 2.1.3 to read 'working dairy farm' instead of 'working farm' (proposed by Cllr Tucker and seconded by Cllr Hooper ).

### **Declaration of Interest**

There were no declarations of interest.

## **PLANNING**

### **Applications (for comment, support or objection)**

There were no applications.

### **Field north of Millrise**

The owner of the field north of Millrise had telephoned the clerk to introduce himself. He had heard there was some disquiet in the parish over work being carried out in the field and he wanted to make contact. He assured the clerk that it was definitely a barn that would be erected. The clerk thanked the owner for explaining the situation.

The meeting was suspended to allow a member of the public to speak.

### **Noise disturbance at Higher Wick**

Cllr Key was not at the meeting but he had spoken to the clerk beforehand to say that he would speak to the Enforcement Officer to confirm the up-to-date position. The resident of Higher Wick was at the meeting and confirmed that the Enforcement Officer had visited his premises before the October Parish Council meeting. He had heard nothing from the Enforcement Officer following that visit.

The meeting then resumed.

## **Decisions**

**21/1866/FUL – Otter View Farm, EX14 4TP – erection of general purpose agricultural building approved**

## **Neighbourhood Plan**

Roger Hicks has completed all the amendments to the draft Neighbourhood Plan and has provided the clerk with a working copy for the Parish Council. He

is now working on the Basic Conditions Statement and the Consultation Statement. Cllr Turner confirmed that the updated plan has been uploaded to the Neighbourhood Plan website.

### **Community Actions**

Cllrs Turner and Ryder have drawn up draft suggestions for the Parish Council to follow when considering Community Actions in the future. Cllr Turner outlined the contents of the documents. The Parish Council will keep a register of possible projects to ensure there is no duplication within the parish. The clerk will circulate the documents to Parish Councillors for consideration at the next meeting. It was agreed that this is an ideal time to work on the Green Code for Luppitt that is mentioned in the Neighbourhood Plan. Cllr Turner undertook to move forward with this.

### **HIGHWAYS AND TRAFFIC**

**Parish Highways programme** - update on Items to Report as follows:

- Photographs to be taken of potholes and road subsidence between Ringborough Cross and Coombeshead, Overday and Gully Lane and Ford Bridge to Shaugh and passed to Highways as these items have been reported several times but no action has been taken.

### **Highways – Parish and Town Council Conference**

Details of the sessions were noted but it was agreed that no Parish Councillor would attend.

### **Parish Maintenance**

#### **Grit bins and notice board at Beacon**

Cllr Pulman undertook to repair the notice board at Beacon if possible. Cllr Pulman will check the grit bins and advise the clerk if any of them need filling.

### **Quote for potholes**

The clerk will reissue the list of potholes identified as needing attention to Cllrs Pulman and Tucker. Cllr Pulman has made a list of work needed to clear ditches and drains in the parish. It was agreed that Cllr Tucker should be asked to carry out the work. Cllr Tucker undertook to keep the Parish Council advised of the number of hours worked so that this can be matched against budget. Cllr Pulman complimented Cllr Tucker on the standard of work carried out at Mohuns Ottery Lane.

### **Road at Stonehayes**

In Cllr Chubb's absence, this item will be carried forward to the next meeting.

### **FOOTPATHS AND BRIDLEWAYS**

#### **Footpath Wardens' Reports**

Nothing to report.

### **Footpath 14**

Judging by past experience, Cllr Tucker expects it to be some time before progress is made on a possible diversion round the boggy area.

## **ENVIRONMENT/COMMUNITY FACILITIES**

### **Playground Initiative**

Cllr Summers reported that there had been great support for the fundraising activities. The Crowdfunding page had reached the target set. It is planned that there will be consultation with families before final decisions are made concerning the play area equipment. Cllr Jack Rowland from EDDC had telephoned the clerk to find out the background to the initiative and how it would move forward. The clerk assured Cllr Rowland that there was no intention to close the Millrise play area. The clerk has completed application forms for Devon County Council (£3,000), East Devon District Council (£6,000) and Locality (£1,000) on behalf of the Playground Working Group. Honiton Lions have also donated £200. The Parish Council recognised the hard work put in by the Playground Initiative group, especially parishioner Lucy Murray, and congratulated the group on successfully raising a very large sum in such a short time.

### **Millrise Play Area Inspection Report**

The clerk has received the annual inspection report which does not show any significant findings of concern. Cllr Pulman undertook to check the pedestrian access gate and to open up the play area again. The clerk confirmed that the Parish Council will be included in EDDC's annual inspection going forward.

### **Email from PCSO**

The community police team for rural Honiton are keen to communicate in a meaningful way with town and parish councils. A crime report had been sent which listed 12 crimes committed between 01/01/21 and 30/09/21 but no information as to what the crimes were. It was acknowledged that, fortunately, Luppitt is a low crime area but it would be appreciated if a PCSO attended a meeting once in a while. The clerk will feed this information back to the PCSO.

### **Children's Christmas Celebrations**

It was agreed to support the children's Christmas celebrations again this year.

### **Devon Communities Webinars**

Cllr Tucker had been unable to access the webinar on the importance of hedges. Cllr Turner had managed to log in to the webinar on dark skies but agreed it was not a straightforward process. Cllr Turner said that the webinar confirmed the research she had carried out for her article in the Luppitt Packet. The clerk confirmed that the webinars are open to anyone, not just Parish Councillors.

## **Blackdown Hills Parish Network AGM**

An invitation to the BHPN AGM was noted.

## **FINANCE AND ADMINISTRATION**

### **S137 Payments (donations) for 2022/23**

The following S137 payments were agreed: TRIP £55.00; Royal British Legion £20.00; Devon Air Ambulance £100; Devon Freewheelers £100; Citizens Advice Bureau £55.00 (clerk to check why this year's cheque had not been presented); British Heart Foundation £50.00 (on the proviso that the clerk could establish why the cheque sent at the beginning of the year had been returned).

### **Half-yearly performance figures against projected budget**

The figures provided by the clerk were noted and accepted.

### **Quarterly check – internal financial control**

In Cllr Ryder's absence, this item will be carried forward to the next meeting.

### **Meeting Dates for 2022**

It was agreed that the Parish Council would continue to meet in the Village Hall on the first Tuesday of each month.

### **Correspondence**

- Cllr Thorne had replied on behalf of the Parish Council to an Upottery resident who had written to set out complaints about lack of communication between Luppitt and Upottery Parish Councils over the planning application at Otter Falls. Several Rawridge residents had written to EDDC to complain about the extra traffic that would result from the additional development. It is an anomaly that Otter Falls lies within Luppitt parish and yet the roads approaching Otter Falls are within Upottery parish and any impact from additional traffic would be felt by residents in Upottery parish rather than Luppitt. Cllr Thorne explained that a site visit had been carried out and all correct procedures had been followed. The matter of extra traffic had been raised but Highways had not put forward any objections to the development. Luppitt Parish Council believes that, if any future planning applications at Otter Falls are received, it would be beneficial for the two Parish Councils to liaise more closely. Luppitt Parish Council feels it is important for the two Ward Members of both parishes (Cllrs Key and Brown) to take a more active part in the communications process regarding any future planning application.
- An email had been received offering free trees for planting projects. The clerk will follow up to see what is involved.

## Chairman's Discretion

The clerk reported a telephone call from someone suggesting a possible site for affordable housing. The clerk explained that, as part of the Neighbourhood Plan's section on affordable housing, the Parish Council had been asked to define Luppitt village and the suggested site was outside this area. The clerk explained that the Parish Council has undertaken to organise a Housing Needs Survey once the Neighbourhood Plan has been to referendum. This will establish whether or not there is a need for affordable housing. The clerk undertook to keep in touch with the caller if the situation over the definition of Luppitt village changed in the future.

## Questions from the public

There were no questions and the meeting closed at 9.25 pm.

## Dates for next meetings to be held in Luppitt Village Hall at 8 pm:

**Tuesday, 7 December 2021**

**Tuesday, 4 January 2022**

- 1 We follow the Roman name. Their year started in March, so their tenth month was December.
- 2 They are in the Pacific, about 200 miles south of Java. Christmas day 1643 was not the date of their discovery but when they were named by the Captain of an English East India Company ship.
- 3 He's definitely real! He was a Bishop in the fourth century, and is the Patron Saint of Greece and Russia, children and sailors. His name is a corruption of the Dutch name for St Nicholas.
- 4 The first documented public Christmas trees are in Alsace and Livonia. Strasbourg Cathedral (1539) and the town squares in Tallinn (1440) and Riga (1510). Each claims to be the first.
- 5 Norway. It is a token of gratitude to the UK for assistance during World War II.
- 6 Wales. There are also Bethlehemans in South Africa and the United States.
- 7 Bede (673 to 735) wrote that it was a period in December and January. Today it just means Christmas. There was a Viking mid-winter feast named Jol, which lasted twelve days.
- 8 They are not named in the Bible, but were identified in the sixth century as Balthazar, Caspar and Melchior.
- 9 Red glass baubles were originally replicas of real apples which were hung on trees. They were invented by F Woolworth in the United States in the 1880s.
- 10 He was Duke of Bohemia from 907 to 929 when he was murdered by his brother. He is the Patron Saint of the Czech Republic.
- 11 It is a gum resin used in perfumery and incense.
- 12 Potatoes were cultivated in Peru and Bolivia some 1800 years ago. The Spanish brought them to Europe in 1570 or so.
- 13 Currants (and raisins and sultanas) are semi-dried grapes. Some Greek currants were exported from Corinth, and thus became raisins de Corinth.
- 14 White.
- 15 Prince Albert, Queen Victoria's consort, brought the idea to England from his native Germany.
- 16 No, not Norfolk or Hungary, but Mexico. They were domesticated by the Aztecs, and first brought to England about 1540.
- 17 Ten ladies dancing.
- 18 The earliest tinzel is believed to be silver. It was in imitation of frosted cobwebs.
- 19 Spain. The name comes from the exporting town Jerez (Xerez) de la Frontera.
- 20 They will get a reply from Father Christmas in Rovaniemi, on the Arctic Circle in Finland.



## DIRECTORY

<b>Parish Council</b>	<a href="http://www.luppittparishcouncil.co.uk">www.luppittparishcouncil.co.uk</a>	
Chairman	John Thorne	01404 891412 07748 780096
Clerk	Rosalind Buxton	01404 861565 07944 625025
<b>Village Hall</b>		
Chair	Stephen Smith	01404 892839
Secretary	Mary Hill	01404 891160
Bookings	Jean Hooper	01404 892969
<b>Commoners' Secretary</b>	Kevin Lockyer	07827 309229
Luppitt Neighbourhood Plan	<a href="http://www.luppittneighbourhood.org.uk">www.luppittneighbourhood.org.uk</a>	
Chair	Roger Hicks	01404 891579
Consultation	Christine Ryder	01404 892880
Parish Notices WhatsApp	Lucy Murray	07968 900349
Luppitt Wives	Mrs Joan Beckett	01404 891308
Associate Priest	Jane Penn <a href="mailto:revjane@dunkeswell.org.uk">revjane@dunkeswell.org.uk</a>	01404 841523
Mission Community Admin	Sara Gordon <a href="mailto:sara@dunkeswell.org.uk">sara@dunkeswell.org.uk</a>	07717 222404
Church Warden	Brian Pulman	01404 891324
PCC Secretary	Vacancy	
Luppitt Entertainments Cttee	Pat Bussey	01404 892720
Captain of Bellringers	Pearl Pulman	01404 891324
Cricket Club	Steve Berry	01404 891268
Hartridge Buddhist Monastery		01404 891251
<b>Surgeries</b>	Blackdown Dunkeswell	01823 681720
	Honiton Medical Centre	01404 548544
	Honiton Minor Injuries Unit	01404 540540
Devon Air Ambulance		01392 466666
East Devon District Council		01404 515616
TRIP (community transport)		01404 46529
Citizens Advice Bureau		0344 411 1444
<b>Location of defibrillators</b>		
Village Hall EX14 4RT		
Lowman's Farm, EX14 4TX (near Red Doors)		



# DABBLING DUCK

♥ SUNDAY CARVERY ♥

Treat yourself to a delicious Sunday carvery at the fully refurbished Dabbling Duck Restaurant and Bar.

We guarantee you a warm welcome and excellent value. All our meals are prepared by our Head Chef using the finest local seasonal produce from local farmers, growers and suppliers.

Adults from £11.50, children from £9.50

Available every Sunday 12-3pm

Booking is required.

Call us on 01404 891287 to reserve your table.

