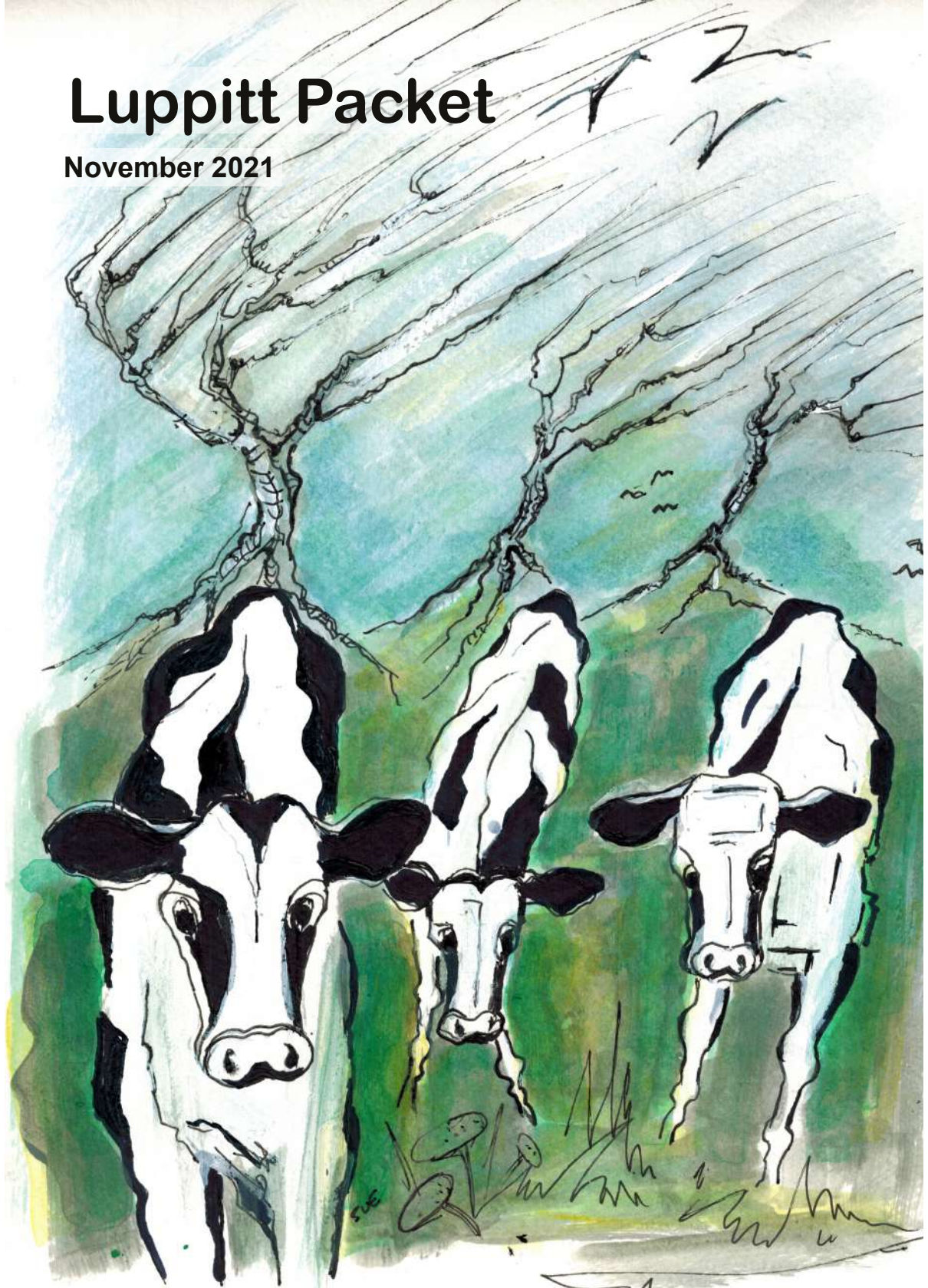


Luppitt Packet

November 2021





Luppitt Christmas Party

**Three Course Meal with
Disco, Bar and Raffle**

**Luppitt Village Hall
Saturday**

**18th December
7:00 for 7:30pm**

**Tickets £25 per head
From Tracey Rosewell:
email dolishfarm@btinternet.com
or phone 891218 evenings
by 11th December**

**** Tables of 8 or 10 ****

**** Places not confirmed until paid for ****

**** Please specify any dietary requirements ****

THE LUPPITT PACKET

Welcome to our November edition of the Luppitt Packet. Were you fortunate to join in with some of the marvellous recent local events? While assembling this edition of the magazine we have been reminded again how lucky we are, for life is good when we make time to think about others, and even better when we take an opportunity to help people as well. We have a few updates on how the kind people of Luppitt have enjoyed themselves supporting many important causes over the last few months, from Blood Bikes to Playground Projects.

Thank you to Sue Hurst for this month's cover art. Sue is now retiring from our team of cover artists, so a big thank you from us for providing so many superb pictures.

Serving: Luppitt, Beacon, Shaugh, Shelvin and Wick

CONTENTS

What's On.....	3	Advertisements	27-42, Back Cover
Features	4-19	Parish Council	43-45
Bulletin Board	20	Directory	46
St Mary's Church	21-23		

COPY DATE FOR DECEMBER ISSUE 18th November 2021

luppittpacket@gmail.com

Editors & Adverts	Trevor Bevan & Martin Hemsley	
Treasurer	John Hayes	01404 890114
Distribution	Mandy Riley	07817517425

ONLINE VERSIONS OF THE LUPPITT PACKET

The website www.luppitt.net, which is hosted by Peter Sage, contains a wealth of information about Luppitt – its history, people, photos, family trees etc.

The site also holds PDF copies of The Packet dating from 2010 up to the current edition. We hope also in due course to have an easily readable electronic copy of the Packet .

DISCLAIMER

The Editorial Team take no responsibility for the information given or views expressed in the Luppitt Packet and will not be liable for any direct, indirect or consequential loss arising from the use of the information and advertisements contained in this publication. Although every endeavour is made to meet the requirements of advertisers, no responsibility can be accepted for failure to insert an advertisement upon any specified date. The Editorial Team reserve the right to refuse or amend any advertisement without assigning any reason.

WHAT'S ON

NOVEMBER

Tue 2 nd	Parish Council Meeting 8pm, Village Hall
Sun 7 th	Christmas Choir First rehearsal
Wed 10 th	Mobile Library @ Mountstephens 10:45 - 11:15am
Fri 12 th	Luppitt Quiz Night , Village Hall
Sun 14 th	Remembrance at St. Mary's Church, 10:50am
Thu 18 th	Luppitt Wives Lunch, Otter Nursery main shop, 12:30pm
Sat 27 th	Morning Market from 11am, Village Hall
Sun 28 th	Service of Advent readings and hymns, 11am

REGULAR EVENTS IN THE VILLAGE HALL

Village Hub Pub	7:30pm every Wednesday and Friday
Bowls	7.30pm Mondays
Friday Market	11am until 1pm 5th, 12th, 19th Nov
Saturday Market	Last Saturday of the month

UPCOMING EVENTS

Sun 5 th Dec.	Make your own Christingle, 3pm.
Sat 18 th Dec.	Luppitt Christmas Party
Sun 19 th Dec.	Carols by candlelight at St. Mary's Church, 6:30pm
Fri 31 st Dec.	Impromptu New Years Eve Gathering, 8pm. Bar, bring & share food.



Quiz Night

Luppitt Village Hall



Friday 12th November, 7:30 for 8:00pm

Bar and Raffle, Teams of 6

£5 per head including Supper

Names to Claire Crabb: 07709 706112

By 5th November please

REMEMBRANCE

As poignant as town and city war memorials are, it's perhaps in the landscape where we feel the loss most keenly. It is partly about what we are used to. We expect most towns to have a war memorial somewhere prominent, we're accustomed to seeing them, and on remembrance Sunday we know what we will be seeing there. But when you come across a memorial that is threaded into the countryside as in Luppitt, it is a jolt. It demands attention. It causes a pause, as you read the names, and learn why this place was special to them, or why this memorial was put here. And that's what war memorials are often about; a sense of place.

The Cenotaph is a fine, dignified focal point for the nation's Remembrance. Remembering the fallen in the Great War, WW2, Korea, Balkans, South Atlantic, Falklands, Kuwait, Afghanistan and many other conflicts and wars too numerous to mention. But it can't possibly show you the ordinary lives and localities of the hundreds of thousands who never came home. The farmers, miners, publicans, mill workers, village doctors, school teachers; people who have never set foot in Whitehall.

So when you wander past the Luppitt memorial and any other memorial in the countryside, you instantly feel the hugeness of the scale, and see how the wars reached across the whole country with its tendrils of fear and grief. It also indicates to you what they were fighting for. The view. The landscape. Peace.

The sentiment is highlighted when you read Laurence Binyon's poem 'For the Fallen'. These famous lines:

"They shall grow not old, as we that are left grow old:
Age shall not weary them, nor the years condemn.
At the going down of the sun and in the morning
We will remember them."



Trevor Bevan

NATIONAL TRUST UPDATE: DUMPDON HILL FORT

A National Dormouse Monitoring Programme nest box scheme was established at the Hill Fort in October 2019 and our first dormouse nest was found one month later which was a very promising start. Unfortunately, we were unable to monitor the boxes in 2020 due to the pandemic however we started monitoring the boxes again this spring. Dormice have been recorded every month throughout the survey season and a litter of four babies was recorded in August. The sex, weight, age class and breeding condition of each dormouse was carefully recorded in the field and then entered in the national database. Whilst the boxes are intended for use by dormice, they are often used by other opportunistic species and this year the team have recorded bank voles, shrews, wood mice and birds in the boxes. Dormice are a protected species so the surveys are carried out by dormice licence holders; given the success of the scheme at the site, Dumpdon Hill fort has become a training venue for National Trust rangers and ecologists hoping to gain their dormouse licence.

In March 2021, 30 bird nest boxes were installed on site and these were regularly inspected by local volunteers as part of the Nest Record Scheme (NRS), the British Trust for Ornithology's nationwide survey of nesting birds. The survey involved checking the boxes to monitor the breeding success of birds by recording whether a nest was present, counting the number of eggs laid, and monitoring the progress of any hatchlings as well as deceased chicks or failed eggs. After a strong start to the season, the prolonged cold and wet weather appear to take its toll on bird populations across Dumpdon Hill Fort. The delayed start to the spring disrupted the nest building, and several boxes showing the early signs that nest construction had failed to progress. The poor weather conditions caused further problems for some species as the cold weather caused food shortages meaning there wasn't enough food available to feed their chicks. At Dumpdon, nine boxes recorded some nest activity with three nests (two great tits and one coal tit) progressing beyond the building phase. A total of 16 eggs were laid in these three nests and 11 chicks were



recorded. Whilst the nest boxes provide additional nesting sites for small birds, the mixed habitat of Dumpdon Hill Fort provides lots of natural features suitable for other birds too. Woodpeckers, spotted flycatcher and skylark nests were observed away from these boxes by local volunteers.

A butterfly survey was launched at Dumpdon Hill Fort in April 2021 as part of the UK National Butterfly Monitoring scheme. Once a week for 26 weeks, local volunteers walked the same transect (weather permitting) recording butterfly species and numbers. 18 species of butterflies were recorded at the site and a total of 724 butterflies were recorded in total. The meadow brown butterfly was the most frequently observed with a total of 341 sightings recorded. The comma butterfly was the least common species recorded with only one observation recorded within the transect.

It's the first year we have run the survey at the site therefore we can't make any direct comparisons to previous years however casual observations suggest that butterfly populations have also had a difficult time this year due to the weather.

The monitoring of wildlife at the Hill Fort over the year has been a fantastic team effort, and the East Devon Countryside ranger team would like to say a huge thank you to all of the volunteers that have contributed to these surveys over the year!

Now that winter has arrived, the National Trust ranger team will be pushing forward with their habitat management and archaeological conservation works. This work will involve removing some scrub and sapling growth on the ramparts to the north of the site and clearing the fence lines so that the boundary fence can be replaced.

We will be hosting scrub bashing events at Dumpdon on the Sunday 21st November and Sunday 12th December so if you would like to get involved in our work at the Hill Fort please contact:

lucy.buckingham@nationaltrust.org.uk
or call 01297 680507.



*Curious. A dormouse at Dumpdon Hill.
Photo by Vernon Whitlock.*

Lucy Buckingham

A Luppitt Stroll

One of the things I appreciate most about walking in the area around Luppitt, is its timelessness. Landscapes do change, but slowly and subtly, and great walks remain great walks full stop. While the world seems rammed with urgency and pressing calls to action, walking lets you breathe, relax and enjoy your time on your terms. Except (and isn't there always an exception?) in autumn.

This spectacular season has a perilously short sell by date, procrastinate and you will miss it. You start to make plans for a walk, the leaves begin to change, then there is an overnight gale that strips the trees and you wake up in winter. So apologies this is an urgent message seize the season, don't miss it.

Turning left out of my gate , I head up the hill passing Mount Stephens cross. Stretching out along church hill lane towards the crossroads, passing Gulley lane on my right. I cross over the junction heading towards Lakeview manor. Just before Lakeview manor there is a public footpath to my left. Before going through the gate, I hear a cacophony of noise , the migration of birds. Britain is the Heathrow of the avian world, slap under a busy migration route with birds flying every which way. Autumn sees some in transit, some packing up to depart for warmer climes, some pitching up from icier spots up north. Wandering along the well maintained footpath, there is a forest to my right, a dense wood with many types of trees, I would love to identify. I am heading for another wood, and meander along the footpath, reaching a stile into a small field. Crossing the field there is a choice, turn right on a footpath to Dunkswell or go forward into a long and narrow wood. I head for the wood.

Some people call this the Rhododendron wood. In spring it has a narrow alley full of blue and Purple Rhododendrons at its lower level. Today I look up at the golden canopy. I am taking in the golden rays of autumn and the ominous creep of twilight, the shimmer of the countryside at its ripest. The trees are putting on their flamboyant farewell. There is a crunch underfoot, and I never tire of kicking leaves. The top crust is a mosaic of copper, gold and tan. Below lies a mahogany mulch of older leaves. I wander through the wood for around twenty minutes, and eventually reach the gate leading to Long lane. I decide I have reached the furthest point of my walk, I decide to turn around and head back to Luppitt.

Each season brings with it a tapestry of new sound, colours and textures. For me, winter is dominated by changing skies and frosts, spring by new life and wild flowers, summer by overblown growth and hopefully sunshine. Autumn is my favourite. It belongs to broadleaf trees. It is a time of outstanding beauty, when the natural world treats us to a last burst of colour before winter.. Stunning shades of russet, red, yellow, ochre, black, orange and brown. We are incredibly lucky to live close to these woodland wonderlands in Autumn.

Trevor Bevan

OTTER VALLEY RESIDENTS URGED TO BACK BEAVERS

Devon Wildlife Trust is advising East Devon residents on how they can have a say on the future of beavers in our countryside

The government has launched a public consultation on the future of beaver introductions in England.

The way the consultation is designed means the most likely responses will be from stakeholders who have a particular interest in how the presence of beavers in our rivers could affect them directly – anglers and farmers, for example.

But every resident of villages and towns along the River Otter and its tributaries also deserves a voice in this consultation on the future of beavers. Local people have been living alongside beavers for around a decade now.

The science and evidence gained from the 5-year River Otter Beaver Trial demonstrated the benefits beavers have brought to the River Otter. Beaver activity has helped reduce flood risk in villages downstream of their dams, has increased diversity and abundance of other wildlife and has also improved water quality, thanks to beaver dams trapping sediment washed into watercourses.

Where beaver dams have caused localised problems for landowners, DWT has demonstrated practical solutions to reducing water levels so the landscape can continue to be shared by beavers and people without conflict.

Beaver-watching near Otterton has become an annual summer activity, with locals and visitors enjoying the experience of being among the first people to see beavers in an English river for hundreds of years. Many such visitors also spend money with local businesses on food, drinks and accommodation.



It is important that all these aspects of local people's experience of living alongside beavers is featured in responses to the government's consultation.

But as the online consultation is not especially easy to navigate, Devon Wildlife Trust has produced the following guidance on submitting a response, so the government hears the voices of East Devon residents who have lived alongside beavers for years.

DWT's Director of Nature Recovery Pete Burgess said: "It is vitally important that we reintroduce beavers in a planned, responsible way, and that we have a toolkit of management techniques available, so we know exactly how to deal with issues if they arise. To maximise the benefits beavers can bring, we need

to continue to provide advice and support for farmers and landowners and provide grants for those who allow more space for water on their land. The launch of the public consultation is the start of a vitally important conversation about the future of these once widespread animals, and we would urge everyone to share their views about the future of beavers in the English landscape.”

DWT is asking everyone to respond to the consultation around four key asks which we believe are necessary for the safe return of beavers in the wild.

To formally recognise beavers as a resident native species in England, as has already been done in Scotland.

To ensure beaver populations thrive in the wild by supporting carefully targeted reintroduction projects, bolstering populations where necessary to ensure their long-term health.

To help landowners to make space for watercourses and wetlands created by beavers by providing appropriate schemes and funding programmes.

To support local beaver management groups who can provide advice, support and practical solutions to ensure beavers and people can share our landscape once again.

The government consultation runs until 17 November and is online at

<https://consult.defra.gov.uk/natural-environment-policy/beaver-reintroduction-and-management/>

For more information on beavers in Devon and on the government's consultation see:

<https://www.devonwildlifetrust.org/what-we-do/beavers>

Or contact DWT on:
beavers@devonwildlifetrust.org

THE BLACKDOWN HILLS REPAIR CAFÉ

We are offering you all to attend our next Blackdown Hills Repair Café at the Parish Hall in Hemyock on the **27th of November 2021 from 10am until 12.30pm**, where you are able to bring all your items for repair, and enjoy a range of delicious refreshments which will be on sale from our tea room.

For further details please contact Stephan, Coordinator of the Blackdown Hills Repair Café

Email: sfelehner@aol.com
Mobile: 07715460783



Village Hall News

Did you know?

Badminton, Bowls, Darts, Football, Skittles, Snooker, Soft Play equipment, Table Tennis and Tennis are all available at YOUR Village Hall. To book use please contact:

Jean Hooper 01404 892969

Coffee and Market

Fridays 11-1pm

Saturday 27th November 11-1pm

To include Children's Soft Play Area

(Coffee and Market will be held once a month on a Saturday in place of the Friday)

HUB PUB

Wednesday and Friday evenings 7.30pm

LUPPITT PLAYGROUND PROJECT

We were so pleased to welcome over 120 people to our Big Breakfast fundraiser on Sunday 17 October. We have received some really lovely feedback about the event and were utterly delighted to make £1326.30 on the day (including some contributions to the sponsored walk). It was a figure that exceeded all expectations, so thank you Luppitt!

Our www.crowdfunder.co.uk project has now raised in excess of £3000, which makes us eligible for grants from both East Devon District Council and Devon County Council. If successful we hope these grants will take us very close to the £12,000 crowdfunder target. Separately to the crowdfunder project we have also been very lucky to receive a £1000 grant from Councillor Iain Chubb and £200 from the Honiton Lions Club.

It is very exciting to think that the playground really may happen in Spring 2022.

A huge thank you to all the sponsors for Big Breakfast food donations and raffle prizes, which allowed us to maximise profits. Local small businesses and individuals include Highfield Stores, Pearl Pulman, Viceroy Tawa, John Thorne, Wilfred and Elizabeth Tratt, Lakeview Manor, the Grazing Cow, Milkshed Catering, Ganesha Whole Foods, Bakers of Honiton, Hillside Farm, the Chown Family, Rumwell Farm Shop, the Yellow Deli, Otter Brewery and Hillview Floristry. And let's not forget these large household names: ALDI, Marks & Spencer, LIDL, Tesco, Sainsbury's, Iceland, Spar, W.H. Smith and Riverford Organics.

A special thank you must go to Steve Berry and Maggie Oliver who helped us with the hall set-up throughout and also the clear-up operation on Sunday.

Lucy Murray and the Luppitt Playground Project Team

Photos of our happy breakfast goers are sadly limited as we were all too busy cooking, washing up, waitressing or walking! However, Eve Vergano who led the kitchen team managed to take this shot of Rosie Tucker and Adam Crabb (cunningly escaping a photo of herself!).



Photos from the children's sponsored walk – Beacon to Luppitt via Wick



At the start, outside Red Doors, Beacon.



The children enjoyed the walk and especially the 'feed station' at Barn Farm, by permission of Christine Ryder.



Racing up the final hill back to the Village Hall.



NORMAN'S TALES

The Pulman family have lived in and around Luppitt for centuries. It is thought they may have come here during the Norman Conquest. The Devon historian W.G. Hoskins records that his ancestor, George Hoskyns, married Margaret, the daughter of John Pulman – yeoman of Luppitt – on 9 February 1548 when he was barely 21 years old. In 1585 the Hoskyns's moved to Luppitt and probably lived at Overday. There is an interesting inventory of all George's goods and chattels on page 36 of John Sage's Luppitt Parish, Church, and People.

One thing is for certain, the Pulman family have shown themselves to be extremely capable builders and farmers, and many of them have been stonemasons.

Norman Pulman is probably the oldest member of the family and here are some of his memories.

"My great-grandparents lived at Rye Park. Great-grandfather Jim bought Honeywells as a ruin and rebuilt it. I remember him giving me a silver sixpence. I wish I had kept it!

My grandfather was born at Braddicks (opposite Barbers Farm) and became a keen builder. The cottages at Franklyns burnt down in the 1930s. He bought them as ruins and made them into two cottages. A builders' yard (R. Pulman & Sons) was set up on Wingate Hill, and he built himself a bungalow there called Sunnyside.

Dad was born at Meshayes and became a carpenter (nicknamed 'Ridgy'). He helped build Dunkeswell Airfield during the Second World War.



Work finished on this project in 1943 and he was called up. He served in the Medical Corps, landing in Normandy on D Day+6. He remembered driving a 3-ton truck across a pontoon! He had to drive in low gear as if he was going uphill – tricky! In 1945 he was demobbed and returned to work as a carpenter.

I was born at Pulshayes (now holiday lets) on 3 July 1930, my parents having been married at Combe Raleigh church. We shared the house with my Uncle William. He then moved to the larger, more productive Gorwell Farm, and we went to Combe Raleigh Mill House Farm; my sisters, Audy and Christine, arrived during the war. Unfortunately, we contracted measles, and baby Christine died. My mother was heartbroken and unable to cope, so we moved in with my grandparents at Allerbeare Farm, Combe Raleigh, until she was better.

I went to Combe Raleigh School. The head teacher was a Welsh lady called Mrs Lodwick. I was friendly with her son Gareth, and her husband Gaff worked for Grandad Pulman. I did not find school easy, as although I am able to read anything I find it difficult to arrange words on paper (dyslexia was not recognised in those days).

When I was 12, we moved to No. 1 Franklins Cottages, so I changed to Luppitt School. I walked to school each day or cycled, leaving my bike at Dolish Farm. I remember Mrs Stamp, who lived at Appletrees, had a habit of throwing her dishwater out of the door on to the road. It could be extremely dangerous if you happened to be passing at the time!

I had a happier relationship with my new head teacher, Miss Simpson, as she was a grumbler rather than a cane user! The Misses Simpsons had been there for years. One of them even taught Dad. I remember the three Bartlett girls from Lowmans, Hazel Norton from Pound and the Farmer boys from Bywood. Just before I left school, at 14, a new infant teacher started, Miss Olive Sage!

I returned to Allerbeare Farm to work for Granddad. There were no tractors on the farm, only horses. Vic Braddick from Shelvin cared for them. The mare usually produced a foal each year, and Vic enjoyed preparing them for Honiton Show, which was always a highlight in the calendar.

Dad bought land around Franklyns and built a bungalow, Franklyns Farm. Granddad died in the 1950s and the remaining properties were



sold. The bungalow went to Mr and Mrs Rosewell. The larger Greenway Farm was purchased with the proceeds. It was very run down, so Dad set to work rebuilding and tractor-driving. I drove the lorry and Mum milked the Jersey cows. A young lady from Smithenhayes, who was 11 years younger than me, came to help with the milking, Barbara Manley – my Barbara!"

Jacky O'Malley and Mary Hill
To be continued



Luppitt Christmas Choir

A fun, informal and relaxed carol singing initiative for all ages & abilities directed by Charlotte Gibbs

Raising funds for Luppitt Playground Project and St Mary's Church

First rehearsal 4.30-5.30pm Sunday 7th November at St Mary's Church, with a small number of community performances

For more information email luppittchristmaschoir@gmail.com or leave a message on 01404 891140



Visit from Santa

Santa will be delivering gifts to the children of Luppitt on Saturday 18th December 2021 between 10 am and 1pm.

If you would like Santa to visit please text or email by 30th November to Mandy Riley on 07817 517425 or mandyrileydevon@gmail.com

Available to all Luppitt children or grandchildren that are visiting on that date.



Closure of Luppitt Commons to Public Access - Notification of Discretionary “28 Day” Restriction under the CROW Act 2000

Please note that the Commons (Hense Moor, Hartridge, Luppitt Common) are CLOSED TO PUBLIC ACCESS on the following dates;

- 4th, 11th, 18th & 25th November 2021
- 2nd, 9th, 16th 23rd, & 30th December 2021
- 6th, 13th, 20th & 27th January 2022
- 1st February 2022

These closures are to permit rough shooting to take place over these Commons.

Further information about open access land can be found on the following Natural England website; www.naturalengland.org.uk/openaccess

BLOODY BIKERS INVADE VILLAGE HALL

Visitors walking into the village hall hub pub were surprised to see an impressively large motorbike with high-vis markings and blue lights.

Two volunteer riders from the Devon Freewheelers had joined us for the evening to accept a cheque for £75, money raised at the Village Reunion event earlier this summer. It was great to hear about their work and one intrepid resident seized the opportunity to climb on and see the view from behind the handlebars.

“I’ll have a pint of type O, please”... you never know whom you might meet at the hub pub on a Wednesday or Friday evening!



RICH CHRISTMAS CAKE

INGREDIENTS

450g currants
170g sultanas
175g raisins
(soak over night in brandy)
50g glacé cherries
50g candied peel (optional)
3 tablespoons brandy
225g plain flour
1/2 tsp salt
1/4 tsp nutmeg
1/2 tsp mixed spice
225g unsalted butter
225g soft brown sugar
4 eggs
50g chopped almonds
1 dessert spoon black treacle
1 lemon - grated peel & juice
1 orange - grated peel & juice



METHOD

20 cm round tin

Heat the oven gas 2 or 160 centigrade

1. Cream butter, sugar and treacle until light and fluffy
2. Add the eggs one at a time, if it curdles add a little flour
3. Gently fold in the flour, spices and salt to avoid knocking the air out of the mixture
4. Then gently fold in the fruit, nuts, orange lemon peel and juices
5. Spoon the mixture into greased and lined tin
6. Bake for 4 1/2 to 4 3/4 hours approx, sometimes needs a little longer, not opening the oven for 4 hours. Should be springy to touch.

Decorate as required

Gill Hunt, Red Doors

POETS CORNER

This poem was shared by Joy Tofts for our November edition in relation to Remembrance Sunday.

WHO ARE THESE MEN?

Who are these men who stand so proud,
who quietly weep, eyes closed, head bowed?
These are the men who once were boys
who missed out on youth and all its joys.

Who are these men, with aged faces,
who silently count the empty spaces?
These are the men who gave their all,
who fought for their country, for freedom for all.

Who are these men with sorrowful look
who still can remember the lives that were took?
These are the men who saw young men die.
The price of peace is always high.

Who are these men who in the midst of pain
whispered comfort to those who they would not see again.
These are the men who's hands held tomorrow.
Who bought back our future, with blood, tears and sorrow.

Who are these men who promise to keep
alive in their hearts the ones God holds asleep.
These are the men to whom I promise again,
veterans, my friends, I Will Remember Them.

Written by a 12 year old girl in 1966

UPOTTERY SCHOOL

From the Headmaster's desk

We continue to be delighted by the children's positive and purposeful attitude towards their learning, after returning for the start of this year. This week, year 6 have been learning the rules of the road, as part of their 'Bikability' course, which teaches older primary aged children about cycling and road safety in a practical and fun way. Of course, this is usually a provision for year 5 pupils, however as this was not possible last year, it has been super to ensure our current year 6 children did not miss out. The instructors were extremely impressed by not only the children's ability, but also by their attitude and respect for what they were being shown. Well done to all our year 6 students; you have demonstrated a super example to the younger years this week, and you are all a credit to our school.

We are in the process of appointing a new Parent Governor. We would like to thank all of those parents and carers who expressed an interest. It is wonderful to see so much support from our school community for such a vital role. It is very encouraging to see so many people putting themselves forward, with such a keen interest, and wanting to make a difference for the children here at Upottery Primary School.

Thank you to all those who have completed the online form giving consent and numbers for next weeks Harvest Festival. We fully understand that in picking a time and date for an event such as this, we will always struggle to be able to accommodate everyone, however we have done our best to make sure that as many adults are able to attend. We would therefore like to thank you all for your patience, understanding and support around this. Since issuing the online form, we have had contact with the church who have informed us that due to very recent, unforeseen circumstances, currently the church is only accessible via the small, side door. Having added this factor into our risk assessment for the service, we have decided that we will now be holding both services in the school hall. This will ensure that we are able to keep everyone as safe as possible both as part of our covid risk assessment, along with our wider risk assessment, which accounts for other risk factors, such as having to evacuate the space safely in the unlikely event of an emergency. Again, we thank you in advance for your understanding around this. Apart from the venue, all other arrangements for the services on Wednesday 13th remain the same. We would all like to again thank the church for their very generous offer of use, and we hope that we will be able to make use of this for next years Harvest.

Finally, many of you will be aware of the covid cases here in East Devon, particularly in our school and educational settings. While we are getting back to a more regular school routine, it is still important to be cautious and to follow guidance. Therefore, to reiterate this: if a child or family member is symptomatic, they should isolate and get a PCR test. It is important to stress this is a PCR test not LFD test. Household members should also isolate unless they are fully vaccinated or under the age of 18 years 6 months. If a positive result comes from a LFD test then the case should take a confirmatory PCR test within 48hrs of the LFD test, and follow the above guidance.

In making sure we continue to follow and abide by the above, we will all continue to do what we can as a school community to minimise disruption and keep as safe as possible at the current time. Thank you for your continued support with this.

Mr Legg

BULLETIN BOARD

PLANTING TREES OR HEDGES? FREE Used Spirals, Bamboo Canes, Tree Guards and Stakes. Contact Mary Hill. Tel: 891160

Luppitt Wives Lunch at Otter Nursery on Thursday 18 November. Meet outside the main shop at 12:30pm. Enquiries to Joan Beckett.

Harvest Food Bank appeal: Thank you for the generous cash donations to the Harvest Food Bank appeal. A cheque for £193.99 has been delivered.

Telephone Scams. If you feel that a call from a so-called "Bank Fraud Team" doesn't feel quite right put down the phone count to 5 then dial 159. This is a service which will tell you if the call is genuine or not.

Never give your bank numbers, password, PIN numbers etc. to anyone. No genuine caller will ever ask you for this information



SMEATHARPE VILLAGE HALL

CHRISTMAS TABLE TOP SALE

SUNDAY 12th of DECEMBER
10:00 am -- 4:00 pm

BOOK A TABLE AND SELL YOUR UNWANTED ITEMS
OR
COME ALONG AND BROWSE.

Snacks and refreshment will be available

Christmas raffle
Table Hire fee £5.00



To book a table contact: Trish Knowles 01404 890174
email: patricia.knowles@btinternet.com

St Mary's Church, Luppitt



OUR CHURCH SERVICES IN NOVEMBER

7th	09:30 AM	Holy Communion	Revd J Hayhoe
14th	10:50 AM	Remembrance	John White
21st	11:00 AM	Informal Worship for stir up Sunday	Lay Led
28th	11:00 AM	Service of Advent readings and hymns	Lay Led

LEST WE FORGET – REMEMBRANCE 2021

Our service of Remembrance will be held on Sunday 14th November at 10:50am at the War Memorial in the Churchyard. The service will be led by John White and is an outside service, weather permitting, so please wrap up warmly. All donations will go to the Royal British Legion.

CHRISTMAS IS COMING

Sunday 28th November is the first Sunday of Advent and everyone is warmly invited to attend a special service of Advent hymns and readings followed by refreshments. The first candle of the Advent wreath will be lit. This candle represents hope.

John Hayhoe

John Hayhoe leaves his role as Rector of the Dunkswell Mission Community Churches this month. He will conduct his last service at Luppitt on 7 November. John will continue to live in Upottery and we wish him well for the future.

From the Parish Register

On Monday 4th October the late Arthur William SAGE, aged 79 years, was buried in the Churchyard of St. Mary's Church.

Lesley's Skydive in aid of St. Mary's Church

A huge thank you to the amazing Lesley Goode and to everyone who so generously sponsored her skydive held on the 13th October. The total she has raised so far for the church is £1331.25, including Gift Aid. An updated total will be published in next month's packet. This is a phenomenal achievement, hearty congratulations.

Could you jump too?

Sponsored skydives for the Church may be booked later this year and throughout the season in 2022.

If you too would like to make a tandem skydive and raise funds for our beautiful Church building call Sara for further information on 891140.



Open to everyone 16 years and older whether living in Luppitt or further afield.

Visit www.dunkeswell.org.uk and find us on Facebook
@sixworshiptogether

Make your own Christingle

Date: Sunday 5th December

Time: 3pm

Venue: Luppitt Village Hall

Refreshments provided

Voluntary donations to the Children's Society



For further details please contact Sara on 07717 222404

FROM REV PENN'S PEN

The six parishes of our mission community (Broadhembury, Dunkeswell, Luppitt, Plymtree, Sheldon, Upottery) are in a strange position. Our rector has resigned and as he told us in his last letter, his tenure ends in the middle of the month. So we find ourselves facing and trying to plan for a vacancy. We are not quite sure what plans the diocese has for us; and for myself, as a two days a week associate priest, I don't have the time or authority to pick up much of the rector's work.

It feels a little as though we're entering an ecclesial limbo land. The past way of church here changing as John leaves us and the future still a dawning and unknown reality. And as I said at the start it's a strange position to be in. John has gone - but not yet. The diocese will let us know their plans for us – but not yet.

It struck me that this is not unlike the place Christians are living in – the 'now' and 'not yet' of God's kingdom here on earth. We had the old way of living, before Jesus walked on the earth some 2,000yrs ago and more recently as individuals before we began to journey with Jesus . ? .yrs ago. We see signs of God's kingdom here among us and yet we know that there is more to come, we are still waiting for God's kingdom to come in all its fullness.

However there is always plenty to do, it's not a time for sitting around twiddling our thumbs and saying 'we're waiting for God's kingdom to come' of course we are waiting for that to happen meantime there's some old junk to clear out and some new skills to unpack. There are some new paths to explore if you look for them and there are always new people to meet and build relationships with.

A retired priest in one of our parishes recently said to me that a bishop in one of the diocese he used to work in said that during a vacancy a church should grow as it could now do anything it wanted completely freed of any restraint an incumbent might have put on it!

I am looking forward to continuing the journey with you.

Rev Jane Penn

LESLEY'S LEAP OF FAITH

When someone asked at a Luppitt do "Is there anyone here who is willing to do a tandem sky jump to raise money for the church?" there was a deathly hush and everyone was probably thinking, bugger that, not me! Well, everyone except Lesley Goode. On the spur of the moment up went her hand and before she realised what she had done Joy stuck a £20 note in her hand and said: "Here you go, you can't back down now."

Sponsors came forward and money was donated so there was no going back. Friends were a bit worried about her and voiced their concerns but Lesley just brushed them aside and said, "Well, I've always wanted to jump out of a plane so that's what I'm going to do!"



On the day of the jump I picked her up expecting to find a nervous wreck, a shivering jelly!! Oh no, she was as calm as anything and eager to go – no nerves, no sleepless night, even ate breakfast! Off we went to Dunkeswell, Lesley chatting away like it was just a little jolly, nothing to worry about, with a "Let's get on with it" attitude.

On arrival we found a very nice man from Skydive who gave Lesley a form to fill in. While he went off to attend to another group Lesley signed the paper, with just a cursory glance at the list of things you had to say that you didn't have, which a lot them she most likely did have. When I pointed this out she replied, "No, I'm sure I haven't got any of those ailments."

It was time for Lesley's briefing. Half an hour passed and a considerable crowd of friends and neighbours from Luppitt had turned up to support her. Out she came in a lovely yellow all-in-one, accompanied by the man whom she was going to be attached to for the duration of the jump – still not nervous, happy and smiling, quite humbled by the good turnout from Luppitt.

Off she went in the plane, with us all wishing her "Goodbye and God speed" on her jump (and all no doubt secretly thinking "I'm glad it's not me").

After the plane had taken off we all went in the transport to the place where she was going to land, so we could welcome her back and take photos. We were told

where to look, to get early sightings of her, and waited to see who would be first to spot her. We didn't have to wait long! From a great distance we could see there was a tiny speck in the sky that we were told was Lesley.

We watched her make the descent, waving to her as she got closer and closer. She made a perfect landing and we could see from our vantage point that she was actually smiling, always a good sign! After the parachute was taken off we were then allowed to go and congratulate her. She was, apart from being a bit wobbly, in a euphoric state of happiness. So it was hugs and kisses all round and total respect for a really brave lady. Her instructor was very impressed too and praised her courageous spirit.



The amount of money collected will be announced in the next issue of the Luppitt Packet. There is still time to donate if you would like to contribute.

Lesley would like to thank everyone who donated and for the huge support that she has had from our community.

Well done, Lesley! We look forward to your wing walk next year!!

Jacky O'Malley



Quaker Meeting for Worship Spiceland Quaker Meeting Uffculme EX15 3AZ

We Meet for Worship at Spiceland every Sunday at 10.30am till 11.30am –
this is a blended Meeting also available on Zoom –

All are very welcome. Meeting ID: 865 5570 2735 Passcode: 498173

For more information phone Ali Dominy 07810768557 or use the “contact us”
form on our website: <http://www.spicelanduffculmequakers.com/> or email
spicelandnotices@btinternet.com

From Quaker Faith and Practice 26.72

The Universal Light

To you who are seekers, to you, young and old who have toiled all night and caught nothing, but who want to launch out into the deeps and let down your nets for a draught, I want to speak as simply, as tenderly, as clearly as I can. For God can be found. There is a last rock for your souls, a resting-place of absolute peace and joy and power and radiance and security. There is a Divine Center into which your life can slip, a new and absolute orientation in God, a Center where you live with Him and out of which you see all of life through new and radiant vision, tinged with new sorrows and pangs, new joys unspeakable and full of glory... The reality of Presence has been very great at times recently. One knows at first hand what the old inquiry meant, ‘Has Truth been advancing among you?’

Thomas R Kelly, 1941

The Religious Society of Friends (Quakers)



The York Inn



Honiton Road, Churchinford. TA37RF 01823 601 333

NOW AVAILABLE.
UPSTAIRS FUNCTION ROOM WITH WIFI, PROJECTOR & SCREEN.
IDEAL FOR MEETINGS, PRIVATE PARTIES

Country Pub offering a warm welcome.

Log Fire. Large selection of Ales including local brews, Games Room, Large screen TV.

Monthly Meat Draw. Lots of Special Events
Good wholesome food using local ingredients. lunchtime & evenings.

Specials board & Homemade Pie Board. Takeaway.

Sunday Roasts. Saturday Breakfast. Parties catered for. Patio Area. Dogs Welcome



Email: theyorkinn@yahoo.com

www.yorkinn.co.uk



CONNETS FARM

CONNETS FARM, DUNKESWELL, HONITON, EX14 4QZ

Locally Grown Christmas Trees for sale

Christmas trees both traditional & non-drop varieties from 3 to 30 feet

Cut, potted and rooted. - Dig or cut your own!

We also have selection of **tree stands, wreaths, garlands, mistletoe, holly, turkeys** and other local produce.

Come down and play in the snow, see the farm animals and the larger than life Father Christmas!



Complimentary
Mince Pies,
Mulled wine
& Chocolates

Trees Starting
from just
£5



Nick: 07860 459745
Heather: 07809 870230
The Farm: 01404 891684
Evenings: 01884 841694

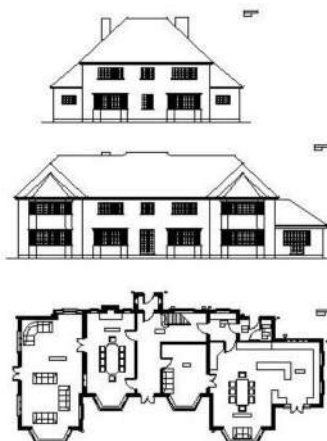
Website: www.connetts.co.uk
Email: connettsfarm@outlook.com
Opening Times: 18th November: 9am - 6pm
9th & 16th December: 9am - 9pm



WE CAN RECYCLE YOUR TREE AFTER CHRISTMAS

**Ringborough
Design and
Planning**

Helping you
design your
dream home



Guillaume Dijon

Telephone: 01823 421 049

Ringborough House
Churchinford, Taunton TA3 7EB

Mobile: 07892 406 096
Email: gdijon@consultant.com

Trees, Woodland & Countryside Management

Woodland & Countryside

Woodland management Garden maintenance

Hedge maintenance / Hedgelaying & Planting

Fruit tree pruning

Tree Work

Felling Crown raising Planting Crown thinning

Technical reductions Pollarding All other tree work

Previous employment: Green Mantle Conservation Contractors National Trust Quantock & Blackdown Hills

Andrew Coleman Environmental Contractors



Phone Rory Proctor: 07966 982845
Email: info@rfptrees.co.uk
Facebook: [rfptreesurgeons](https://www.facebook.com/rfptreesurgeons)
www.rfptreeandlandscapeservices.co.uk



Lending with Heart and Mind

**East Devon District Council fund a
not-for-profit loan scheme for homeowners and landlords*.**

**We understand the expense of maintaining your home and we work with
you to take the stress out of funding repairs, improvements or adaptations.**

We see you as an individual, not a credit score. Our knowledgeable team of advisers
will guide you through the process of applying for a home improvement loan.

For a no-obligation assessment or more information
visit www.lendology.org.uk or call 01823 461099

Heatherton Park Studios, Bradford on Tone, Taunton, TA4 1EU

*subject to eligibility

LOCAL MEAT FOR SALE

Higher Moorlands Farm

* Grass fed beef & hogget

* Free range pork, raised on
British grown peas and barley

For a price list please email:

HigherMoorlandsFarm@gmail.com

Or phone

Ollie 07527627296

Eve 07807305881

PEACE GARDEN PRODUCE

Fresh fruit and veg

Groceries

Dairy products

Cakes and Pastries made to order

Logs (Net or load)

On sale daily
at Dove Cottage, Luppitt

Deliveries made

Tuesdays and Fridays

Please order by 3.00pm day
before

Contact John on 07748780096 or
01404 891412



Finding the best beer in town
doesn't take a lot of investigating



OTTER BREWERY
www.otterbrewery.com



Upottery, Honiton, Devon, EX14 9QT
01404 861705
Charity Number 1157940

Experienced & qualified staff, including 2 Early Years Teachers

Purpose built building * secure outside play area & garden

2-5 year olds

Mon, Tue, Wed, Fri 9am-3.30pm

Thurs 9am-1pm

Parent & Toddler group Thurs 9am-1pm

To find out more or arrange a visit please contact **Abi Few on 01404 861705**
upotterypreschool@outlook.com www.upotterypreschoolcio.weebly.com

Music and Movement or Soft Play Session for Children

Luppitt Village Hall

Wednesdays, term time only

Starts at 9.30am with approximately 45 minutes of singing and dancing

Price is only £1.00 per child, to include a drink and a biscuit,

also coffee or tea for the adults

From babies till school age. **Any enquiries contact Maria 01404 891058**



// It is our belief that a combination of good herd planning, routine monitoring and preventative medicine is the key to success on a modern farm. //



Great value medicines delivered to farm!

mountvets.com

- ✓ 11 Experienced Farm Vets
- ✓ Own Lab For Quick Results
- ✓ Regular Farm Skill Courses
- ✓ Positive Approach To Farm Health Management



Wellington Wiveliscombe Broadhembury

Tel: 01823 662286


COLIN LAYZELL
 CABINET MAKERS

**Makers of
 Furniture, Kitchens
 & Interiors**

www.colinlayzell.co.uk
 T: 01404 891815
 E: colin@colinlayzell.co.uk



S A BOLAND LIMITED
 BUILDING CONTRACTOR & CARPENTER

We take your ideas and designs and turn them into reality.

Specialising in :

- Extensions
- Barn Conversions
- Conversions
- Home Improvements
- Kitchens & Bathroom Renovations
- Roofing
- Carpentry & General Building

Contact Stuart to discuss your requirements.

T. 01404 42467
 M. 07774 907733
 saboland@btinternet.com
 sabolandltd.com

Stuart's Sweeping Service



Support your local trades – use a local Chimney Sweep

A clean chimney is a safe chimney

Chimney, woodburner and range cooker sweeping.
 Power sweeping, Bird's nest removal.
 Camera inspections, Cowls and bird spikes fitted.
 Wood-burners, multi-fuel stoves and liners installed.



07432 118318

Evening and weekend appointments available.



Member of The Guild of Master Sweepers.
 HETAS Approved Chimney Sweep.
 HETAS Registered Installer.
 Sweep Safe accredited.
 Thatch trained. NFU Insured.





Highfield Stores & Post Office

Tel: 01404 891015

The village store offering so much more:

Situated in the Highfield Estate, Dunkeswell, we have a huge range of groceries, fresh meat, fruit & veg, newspapers and much, much more!



Our post office provides most services (excluding car tax).

You can deposit cash and cheques into almost every bank. 7 DAYS A WEEK !!

Why not avoid the queues in the high street and enjoy a browse in our spacious, well-stocked and friendly PREMIER shop with plenty of free parking and fantastic monthly offers!!

**SHOP & POST OFFICE OPENING HOURS:
MONDAY-SATURDAY 7AM-9PM
SUNDAY 8AM-8PM**

Unit 5 Culme Way, Dunkeswell, Honiton, EX14 4JP
Email: highfieldstores14@gmail.com

- Window Cleaner
- High reach hot water system
- Frames and doors all in
- Gutters/Facias Cleaned
- Patios
- Solar Panels

Excellent references if required
For that personal service contact :

Sean Harris
Telephone: 01404 814963
Mobile: 07737 419077



Plumbing & Heating

Southwoods Farm
Ashill
Cullompton
Devon
EX15 3NS

Phone: 01884 841130
Mobile: 07860 441510

No call out charge

- All aspects of plumbing & heating
- Boiler, Aga & Rayburn servicing
- Gas, Oil, LPG & Solid Fuel
- Bathroom installations
- Gas Landlord Safety Certificates
- Under floor heating specialists
- Free estimates
- All work guaranteed

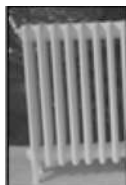
Contact Neil Thomas



www.njtplumbingandheating.co.uk

Need to rejuvenate old metal objects?

We provide a variety of services ranging from powder coating to hot zinc spray and shot blasting. We keep a range of about 100 colours in stock. Most are exterior polyesters, which provide excellent durability and colour retention on gates, railings and garden furniture.



Industrial Coating Supplies

Phone 01884 34506

Opening Hours Monday - Thursday 8 am - 5 pm or Friday 7 am - 1 pm

email coatingsupplies@aol.com www.industrialcoatingsupplies.co.uk

Units 1 + 2 Simmons Place, Kingsmill Industrial Estate, Cullompton EX15 1BH

CUSTOM WOODWORKING, CARPENTRY & JOINERY

TRADITIONAL AND
CAD/CNC DESIGN AND
CONSTRUCTION.

YOUR DESIRES IN WOOD
REALISED.

FROM BOOKSHELVES TO
BOOKCASES. FROM WINDOWS
TO WARDROBES AND FROM
TRINKET BOXES TO BESPOKE
FURNITURE.

WHEN THE JOB REQUIRES JUST
THAT LITTLE BIT OF EXTRA
CARE AND ATTENTION CALL:-

PETE WHITE
07884337570

MANOR ANTIQUES

RESTORATIONS

Specialist in Antique Furniture Restoration

Cabinet making, Inlay, Repairs, Veneering

French Polishing, Wood Finishing,

Bespoke Furniture made

CALL IAN WEDERELL

MOBILE 07732549414

OR 01404 891571

30 years in the trade

www.manorantiquesrestorations.co.uk

THE SIDMOUTH ARMS UPOTTERY

OPEN ALL DAY



Great Drinks!

Great Food!

Great Choice!

Extensive daytime and evening menus using locally sourced ingredients, freshly prepared and cooked on the premises

Food available from 12noon until 9pm weekdays (8pm Sundays)

Book early for our ever-popular Sunday Roast (12 until 5)

Function Room Available

For your meeting, training day
or group presentation.

Equipped with audio-visual facilities
including a hi-def projector and
large drop-down screen.

Outside Functions Catered For

For your wedding or other special
event, we can supply full catering
and bar facilities to suit your
requirements. Any number of
people catered for.

Upottery, Honiton, Devon. EX14 9PN Telephone 01404861252

www.sidmoutharms.com

sidmoutharms@gmail.com



Sidmouth Arms



SPARKLES

CLEANING • SERVICES

For a friendly, personal service

- Weekly / fortnightly cleans
- Spring cleans
- Deep cleans • House moves

Please call Tracy for an informal chat

Phone: 01404 891505

Mobile: 07720 321 413

tracy@sparkleshoniton.co.uk
www.sparkleshoniton.co.uk



Insured • DBS/CRB Checked • References

JOB VACANCIES

RED DOORS FARM

GILL AND TIM HUNT

**WOULD LIKE TO EMPLOY LOCAL CLEANERS FOR OUR
5* HOLIDAY COTTAGES**



£11.00 PER HOUR

COME AND JOIN OUR SMALL AND FRIENDLY TEAM

FRIDAYS AND/OR MONDAYS 10.00AM TO 2.15PM

PLEASE CALL GILL HUNT ON 01404 890067

OR email info@reddoors.co.uk



KFBS LTD

**ARCHITECTURAL DESIGN
PROJECT MANAGEMENT
PLANNING & DEVELOPMENT
BUILDING CONTRACTORS**



• RESIDENTIAL & DOMESTIC PROPERTIES • LISTED & AT RISK BUILDINGS
• HOSPITALITY & LICENCED PREMISES • COUNTRY HOUSES & HOTELS
• AGRICULTURAL/EQUESTRIAN • INDUSTRIAL & COMMERCIAL
FROM INITIAL CONCEPT THROUGH TO FINAL COMPLETION
FREE INITIAL ADVICE AND ESTIMATE

01823 666 223



CIOB



RICS

info@keithfarmer.co.uk



Your friendly, local Small Animal Veterinary Practice

Honiton

62 New Street
EX14 1BZ
01404 42750

Hemyock

Unit 1c Station Rd Ind Est
EX15 3SE
01823 681067

www.newstreetvets.co.uk

Consultation by appointment only

★ **24 hour Emergency service available** ★



Proud members of
Checkatrade.com
where reputation matters



★ **Trustpilot**



**Everything
Plumbing
& Heating**

Email: info@synergisw.co.uk Website: synergisw.co.uk

- | | |
|---------------------------|-----------------------------|
| ✓ New Boilers | ✓ Plumbing |
| ✓ Heating Systems | ✓ Heating Care Plans |
| ✓ Boiler Servicing | ✓ Boiler Repairs |

24 Hour Availability

Call: 01404 234 363



Paul Prettejohn

Garden Machinery & Groundcare



Email: paul.prettejohn@btopenworld.com

www.paulprettejohn.co.uk

Honiton: 01404 890257

Wellington: 01823 662656



NEW PRODUCTS



USED PRODUCTS



REPAIRS



SERVICING



COLLECTION & DELIVERY



CUSTOMISATION

*Professional Gardeners
& Landscapers*



Goodlife
GARDENERS &
LANDSCAPERS

Grass cutting, hedge trimming,
tree surgery and planting.
Garden waste removal service.
Regular gardening undertaken
throughout the year.

.....
WE OFFER A FRIENDLY AND
RELIABLE SERVICE
.....

PROFESSIONAL HARD AND SOFT
LANDSCAPING TEAM FROM
DESIGN TO COMPLETION ALSO
AVAILABLE
.....

.....
Phone Rob or Shelley on 01404 881756 or mobile 07866 672150

www.goodlifegardeners.co.uk

Est. over 75years.

DELVE electrical

Approved engineers and contractors.

Free estimates

Domestic, Agricultural & Industrial Installations & Maintenance,
Economy 7 Heating, Spares & Repairs, Motors & Generators.

For all your electrical needs - large or small.

Unit 1, Devonshire Way, Heathpark, Honiton. EX14 1YF.

Tel: 01404 42958

Email: info@delveelectrical.co.uk

Website: www.delveelectrical.co.uk



ASHCULME

TREE WORK | LANDSCAPING | FENCING | PAVING | MAINTENANCE



TREE WORK - ALL ASPECTS OF TREE WORK INCLUDING: REMOVAL, CROWNING & LIFTING

STUMP GRINDING - TOTAL REMOVAL OF ANY SIZED TREE STUMP

LANDSCAPING - ALL PROJECTS UNDERTAKEN

FENCING - NEW INSTALLATIONS OR REPAIRS TO EXISTING FENCES

TURFING - PREPARATION & LAYING OF YOUR NEW LAWN

PAVING - REPAIRS TO EXISTING PAVING OR COMPLETELY NEW INSTALLATIONS

GARDEN MAINTENANCE - HEDGE & SHRUB TRIMMING, FRUIT TREE PRUNING & MORE

EMERGENCY 24/7-

07815 146343

www.ashculmetreesurgeons.co.uk

info@ashculmetreesurgeons.co.uk

FOR A FREE QUOTE FROM YOUR FRIENDLY, RELIABLE & ESTABLISHED LOCAL FIRM:

**CONTACT
PAUL DURMAN**

01823 353302

CLERK'S REPORT OF A MEETING OF LUPPITT PARISH COUNCIL HELD AT LUPPITT VILLAGE HALL ON TUESDAY, 5 OCTOBER 2021 AT 8 PM

Present: Cllrs Michele Turner (Vice-Chair), Beth Hooper, Paul Prettejohn, Christine Ryder, Martin Summers, Andrew Tucker, David Key (EDDC), Iain Chubb (DCC) and Rosalind Buxton (Parish Clerk)

Receive apologies for absence

Apologies were received from Cllrs John Thorne, Brian Pulman and Colin Brown (EDDC). Cllr Turner took the Chair in Cllr Thorne's absence and welcomed everyone to the meeting.

Minutes of previous meeting

The Minutes of the meeting held on Tuesday, 7 September 2021, were unanimously agreed and signed as a correct record of that meeting (proposed by Cllr Ryder and seconded by Cllr Turner).

Declaration of Interest

There were no declarations of interest.

PLANNING

Applications (for comment, support or objection)

21/1922/FUL – 10 Millrise, Luppitt, EX14 4UA – off road parking in the front gardens of properties 9 & 10 Millrise. The Parish Council has no objection to this planning application.

Field north of Millrise (Cllr Key)

Cllr Key has visited the site and confirmed that the foundations are for a barn, not a house. Cllr Tucker queried whether the planning approval which was granted in 2012 had expired. Cllr Key said that the installation of the cattle grid within 3 years of planning approval being granted meant that work had started on site and the planning approval was still valid.

Noise disturbance at Higher Wick

The clerk read out an email that had been sent to Cllr Thorne by someone who has walked regularly on Dumpdon Hill. The writer had been disturbed by the noise of metal works coming from a farm at Higher Wick. The matter was discussed and Cllr Key confirmed that the Enforcement Officer will visit the premises to assess the situation. Cllr Tucker pointed out that there would be less traffic now than there would have been when it was a working farm. Cllr Key will keep the Parish Council informed.

Decisions

20/2058/MFUL – Otter Falls, New Road, Upton, EX14 4QD – Development of holiday units. Approval with conditions.

Neighbourhood Plan (website)

Cllr Turner advised that she is meeting Roger Hicks and is bringing the Neighbourhood Plan website up to date with the latest information. Reference was made to an email from Angela King outlining progress of the Local Plan and its relationship with made and emerging Neighbourhood Plans.

HIGHWAYS AND TRAFFIC

Parish Highways programme - update on Items to Report as follows:

Potholes at triangle at Hartridge, Jack's House and Barn Cross – all completed. No progress on the following items which will be reported again by the clerk - Ringborough Cross to Coombeshead and pothole between Overday and Gully Lane.

RTA Temporary Restriction

Notice received that the road past Lowmans Farm, Beacon, will be closed on Friday, 17 December 2021, for location and clearing of a blockage.

Road at Stonehayes

Cllr Tucker pointed out that the good work carried out to repair the road by Stonehayes has been undermined because the ditch is too shallow and water still runs over the road. Cllr Chubb undertook to follow up and report back to the Parish Council.

Parish Maintenance

Cllr Tucker is working on the quote to repair potholes in the parish identified by Cllrs Pulman and Thorne.

Sandbag requirements

Cllr Tucker has a sufficient supply of sandbags.

FOOTPATHS AND BRIDLEWAYS

Footpath Wardens' Reports. Nothing to report.

Work on Footpath 14

Cllr Tucker and Gavin Brake had a successful meeting with Ros Davies, Parish Paths Liaison Officer at Devon County Council and Richard Spurway, DCC Footpath Warden, to discuss a possible diversion to avoid the boggy area on this footpath.

ENVIRONMENT/COMMUNITY FACILITIES

Playground initiative

Cllr Summers reported that the working group has made substantial progress, not only in gathering information about equipment but also fundraising ideas and events planned. The parishioner leading the project has been in touch with the clerk who in turn has provided information as requested. A Crowdfunding page has been set up and it is hoped to raise £3,000 by the end of October. This sum will enable the group to be eligible to apply for grants from EDDC and DCC. Cllr Chubb has agreed to donate £1,000 from the Locality budget and it is hoped that a grant application to the National Lottery Fund will also be successful. The Parish Council recognises that the parishioner organising the project has worked extremely hard. The Parish Council will continue to support the project where it can.

Village Hall Representative

Cllr Summers has agreed to be the Parish Council representative on the Village Hall Management Committee. The clerk has written to the secretary of the Management Committee to confirm.

Green Ambassador

Cllr Turner has approached the parishioner concerned and is waiting to hear the

parishioner's decision.

Airfield Visit

This item was postponed to the November meeting. Cllr Prettejohn gave Cllr Turner a contact number.

Notice Board at Beacon

Cllr Pulman was not at the meeting so could not report on progress. This item will be discussed at the November meeting.

FINANCE AND ADMINISTRATION

Correspondence

An email from Devon Communities publicising forthcoming events was noted. The clerk will book Cllr Tucker on the webinar on the Importance of Hedges and Cllr Turner on the one concerning Dark Skies. The clerk will establish if these webinars are only available for Parish Councillors to attend.

Half-yearly figures

The clerk had not received the September bank statement but, once this is received, will complete the figures and present them at the November meeting.

CHAIRMAN'S DISCRETION

The clerk will book Cllr Turner on a Chairman's course run by DALC to be held via Zoom on 22 November.

The clerk has been advised by Cllr Pulman that a risk assessment and safety inspection have been carried out at the play area at Millrise with no problems arising. The clerk has not received a safety certificate so will follow up.

Cllr Tucker raised the matter of water running into the gardens at Millrise. The clerk was asked to follow up but since the meeting Cllr Tucker has confirmed that the matter has been resolved.

QUESTIONS FROM THE PUBLIC

There were no questions and the meeting closed at 9.05 pm.

Date for next meeting to be held in Luppitt Village Hall at 8 pm: Tuesday, 2 November 2021

DIRECTORY

Parish Council	www.luppittparishcouncil.co.uk	
Chairman	John Thorne	01404 891412 07748 780096
Clerk	Rosalind Buxton	01404 861565 07944 625025
Village Hall		
Chair	Stephen Smith	01404 892839
Secretary	Mary Hill	01404 891160
Bookings	Jean Hooper	01404 892969
Commoners' Secretary	Kevin Lockyer	07827 309229
Luppitt Neighbourhood Plan	www.luppittneighbourhood.org.uk	
Chair	Roger Hicks	01404 891579
Consultation	Christine Ryder	01404 892880
Parish Notices WhatsApp	Lucy Murray	07968 900349
Luppitt Wives	Mrs Joan Beckett	01404 891308
Associate Priest	Jane Penn revjane@dunkeswell.org.uk	01404 841523
Mission Community Admin	Sara Gordon sara@dunkeswell.org.uk	07717 222404
Church Warden	Brian Pulman	01404 891324
PCC Secretary	Vacancy	
Luppitt Entertainments Cttee	Pat Bussey	01404 892720
Captain of Bellringers	Pearl Pulman	01404 891324
Cricket Club	Steve Berry	01404 891268
Hartridge Buddhist Monastery		01404 891251
Surgeries	Blackdown Dunkeswell	01823 681720
	Honiton Medical Centre	01404 548544
	Honiton Minor Injuries Unit	01404 540540
Devon Air Ambulance		01392 466666
East Devon District Council		01404 515616
TRIP (community transport)		01404 46529
Citizens Advice Bureau		0344 411 1444
Location of defibrillators		
Village Hall EX14 4RT		
Lowman's Farm, EX14 4TX (near Red Doors)		



DABBLING DUCK

♥ SUNDAY CARVERY ♥

Treat yourself to a delicious Sunday carvery at the fully refurbished Dabbling Duck Restaurant and Bar.

We guarantee you a warm welcome and excellent value. All our meals are prepared by our Head Chef using the finest local seasonal produce from local farmers, growers and suppliers.

Adults from £11.50, children from £9.50

Available every Sunday 12-3pm

Booking is required.

Call us on 01404 891287 to reserve your table.

