

LUPPITT PACKET



February 2021

THE LUPPITT PACKET

Welcome to 2021!! We hope all our readers managed to have as good a family Christmas and New Year as conditions permitted. At the time of writing, the country has once again entered lockdown but immunisation is underway!

The Packet editorial team, treasurer and all our support staff are very sad to report the deaths of Mary Wright and John Hill. We are delighted to hear that, after a very prolonged illness and stay in two hospitals, Joan Beckett is finally home and recovering. It is wonderful to be able to report such good news for once.

For your 'delectation' we have an amusing rewrite of Auld Lang Syne written by a Scottish lady poet and for your 'education' an article kindly submitted by a local which demystifies BROADBAND for those of us who thought chips were what you ate rather than ran computers, and old enough to remember telegrams, the Queen's coronation, black and white TV and horse drawn carts! We are following the same hygiene procedures for distribution of the magazine as during the previous lockdown.

Nigel Hurst & Claire Stevens

CONTENTS

Obituary and thank you	1	St Mary's Church	10-12
Features	2-10	Parish Council	13-16
Swaling Luppitt Common	3	Advertisements	17-32, Back Cover
Rector's letter	11	Directory	Inside Back Cover

COPY DATE FOR MARCH ISSUE

18TH FEBRUARY 2021

Editors & Adverts	Claire Stevens & Nigel Hurst	luppittpacket@gmail.com
Treasurer	John Hayes	01404 890114
Cover Art	Vanessa Nancarrow; Susan Hurst, Julia Sparks	
Distribution	Mandy Riley	07817517425

DISCLAIMER

The Editorial Team take no responsibility for the information given or views expressed in the Luppitt Packet and will not be liable for any direct, indirect or consequential loss arising from the use of the information and advertisements contained in this publication. Although every endeavour is made to meet the requirements of advertisers, no responsibility can be accepted for failure to insert an advertisement upon any specified date. The Editorial Team reserve the right to refuse or amend any advertisement without assigning any reason.

OBITUARY - MARY WRIGHT

Sadly on the 6th January 2021, a funeral service and burial was held in Luppitt, for Vera Mary Wright, who died peacefully on the 23rd December 2020.

The service was attended by a COVID restricted number, consisting of family, friends, locals and pub goers (who often fitted into one or more of the previous categories).

Mary was born on 11th February 1922, at Goulds Farm in Luppitt. When she married Albert Wright, her connections with the 'Luppitt Inn' began. The two of them started running the pub together in 1957, until 1989 when she was widowed. She continued running the pub single-handed for the next 31 years, during which time she became a well known character locally, and also further afield. Although the fame was not always wanted, she did enjoy people wanting to speak to her, especially if they could tell her something she hadn't heard!

Many thanks for the many cards and messages of sympathy that have been received.

Her spirit is sure to live on.

Phil Smith

THANK YOU

DEAR FRIENDS

All my grateful thanks for all your kind thoughts and for all the many kind deeds I have received. I send you all my belated good wishes for a peaceful and 'normal' 2021 and I hope to see you all very soon.

Joan Beckett

CHRISTMAS GIFTS TO LUPPITT CHILDREN

Father Christmas appeared for a whistlestop tour of Luppitt to hand out presents to the children this year.

The children were very excited to see him and delighted with their gifts.

Thank you to Father Christmas, Jayne, Mandy and Mia for making this happen.

HONITON FOOD BANK CHRISTMAS APPEAL

Thank you for the wonderful response to our Christmas appeal.

A large amount of ambient goods, including lots of lovely Christmas treats, were gratefully received on 15 December. We also received cash donations and were able to send a cheque for £72.30, which included applicable gift aid, to the Food bank which helped them to buy essential goods.

Ongoing support

If you would like to make a cash donation to the Food Bank, to support their work to provide food to those struggling to feed themselves and their families, please contact them directly on 01404 43800 or find donation options on their website. You are also still able to donate via St. Mary's Church. Please contact the treasurer, Sara Gordon, on 891140 for details.

THANK YOU FROM HELENA RODRIGUES, POSTIE FOR LUPPITT

I would like to thank all my costumers for all their gifts at Christmas.

Wishing you all a happy new year and keep safe.

Lots of love, Helena

LOOKING AFTER LUPPITT COMMONS – PART 2

Luppitt Commons are an important part of the village comprising the land on Hartridge, around Luppitt Cross and the whole of the SSSI Hense Moor Valley plus other smaller areas. Hense Moor SSSI supports some of the best remaining mixed valley bog and lowland heath habitats in Devon. Together with the adjacent commons the SSSI supports many other diverse habitats including wet woodland, streams, neutral and acid grassland.

To help look after the Commons in an environmentally friendly way the land was initially entered into Natural England's (NE) 10 year Higher Level Stewardship (HLS). Over the 10 years of the scheme there was extensive restoration work that aimed to clear areas of scrub and bracken that had started to extend over parts of the important lowland heath and bog habitats. After consultation with all stakeholders, fencing was also improved across the commons to enable better grazing management that was to be the main tool for habitat restoration.

At the conclusion of the HLS scheme NE deemed it to have been a success in meeting its objectives and therefore entered into a new Higher Tier Countryside Stewardship agreement with us which started 1st January 2018 and covers parts of Hartridge and the whole of the SSSI Hense Moor Common. The new 10 year agreement aims to build on the environmental benefits gained from the HLS agreement. The species rich grassland and mire communities will continue to be managed sympathetically with cattle grazing and targeted bracken/scrub control to help further enhance the sward diversity and habitat for a range of flora and fauna.

You may remember from the previous article that under the new agreement 5Ha of the steep west facing side of Hartridge Common have been brought back into grazing management with the aim of reducing bracken levels and increasing the floristic interest in the grassland beneath. The bracken has been controlled by cutting, after the 1st July each year, with follow up grazing by cattle that crush the bracken with their hooves. Grazing has been enabled by temporary fencing that is in place for less than 6 months in every year. The result over the last two years has been amazing with the bracken cover much reduced and wildflowers such as common spotted orchid, Devil's bit scabious, common knapweed and bird's foot trefoil starting to spread up the hill from the already floristically rich roadside verges. The verges have historically been cut in late summer by Bernard Clapp and are a testament to what can be achieved when bracken cover is reduced and wildflowers given the light and management they require.

As part of the preparation for the Higher Tier application a woodland management plan was prepared for the 30+ hectares of woodland on Hense Moor and Hartridge. The plan was approved by the Forestry Commission and aims to improve structural diversity with the woodland areas. Again, you may have noticed that small areas (<0.1Ha) are being coppiced during the dormant winter months on a continuing annual basis. Coppicing allows more light to reach the woodland floor and encourages woodland flowers such as primroses, violets and bluebells and also butterflies such as the silver washed fritillary whose caterpillars feed on dog violet leaves.

Ash dieback has sadly started to affect many trees on the commons. The commoners are very aware of the threat that these trees pose to public safety therefore diseased trees which are close to footpaths & roads are being removed by the commoners on a continuing basis. Within the woodland where the dead or dying trees pose no risk to the public the trees are being left.

Deadwood plays a big part in nutrient recycling, slowly releasing nitrogen into the soil for other plants to use. It acts as a carbon storage system, capturing carbon and locking it into the ground. Deadwood is one of the most important factors for biodiversity in woodland supplying important, shelter, feeding and nesting habitat for birds (eg. woodpeckers, tree creepers, owls, kestrels) mammals (eg. wood mice, dormice, voles), fungi, plants, amphibians, reptiles and insects (eg. stag beetles).

Another reason for leaving diseased ash trees, where safe to do so, is that some trees may develop resistance to the fungus that causes ash dieback. Over time resistant trees may well be able to spread naturally and replace those lost. Genetic variability is higher in ash trees than in the elm trees lost to disease in the last century so they have a better chance of developing effective resistance.

Carbon storage and sequestration is a buzz phrase we hear a lot at the moment. Management of the commons under Higher Tier has an important role to play and the permanent grassland, wet bogs and woodland are all very important carbon sinks and stores. Removing scrub from the wet heath and bogs reduces water loss and prevents the underlying peat from drying out and releasing carbon into the atmosphere.

There will be further articles in The Packet over the next few years to further inform you about management of the commons and how the Higher Tier agreement is achieving its environmental aims.

George Greenshields & David Barlow



SWALING OR BURNING OF THE LUPPITT COMMONS 2021

The Trustees of Luppitt Commons hereby give notice of their intent (weather permitting) to burn parts of the Commons (Luppitt, Hartridge, Hense Moor) during the months of February, March and April 2021.

The Commons will be burnt in accordance with the code of practice laid down by DEFRA for the burning of heather, grass, gorse and vaccinium.

AULD LANG SYNE (2020 remix)

Published with the kind permission of
Breea Keenan

Could auld corona be forgot?
It's time to turn the tide
Could auld corona be forgot?
Let days of '20 slide

Let 2020 slide, my dear,
Let 2020 slide.
Well take a cup o' quarantine,
Let 2020 slide.

We aw hae run right oot o' steam
This year has been pure mince.
We started in oor living rooms
And been here ever since.

Let 2020 slide, my dear,
Let 2020 slide.
Well take a cup o' quarantine,
Let 2020 slide.

The whole year start'd oot, ye see
Wae nowt but normal fears
Who knew we'd finish isolating,
Endin' up in tiers

Let 2020 slide, my dear,
Let 2020 slide.
Well take a cup o' quarantine,
Let 2020 slide.

Don't forget tae wash yer hands
And mind an' don yer mask,
Stay outdoors and mind as well,
Don't share yer wee hip flask.

Let 2020 slide, my dear,
Let 2020 slide.
Well take a cup o' quarantine,
Let 2020 slide.

And surely ye deserve a dram
And surely I'll doon mine,
And we'll take a cup o' quarantine,
Dash home, avoid a fine.

Let 2020 slide, my dear,
Let 2020 slide.
Well take a cup o' quarantine,
Let 2020 slide.

We pause tae think of those we've lost,
The sick and lonley too.
And those who helped along the way,
We're sending thanks to you.

Let 2020 slide, my dear,
Let 2020 slide.
Well take a cup o' quarantine,
Let 2020 slide.

So raise yer wee drams virtually,
An' thank the Lord it's done,
Let 2020 slide, my dear,
An' better times tae come.

BREEA KEENAN
**Wishing you a very happy &
healthy 2021.**

MOBILE LIBRARY

The mobile library will call at Mount Stephens on Wednesday 6th January from 10:45am until 11:15am.

The van is now open for you to select books but face coverings must be worn. If you are not a member of the library you can join on the day.



TOAST TO COAST 2020

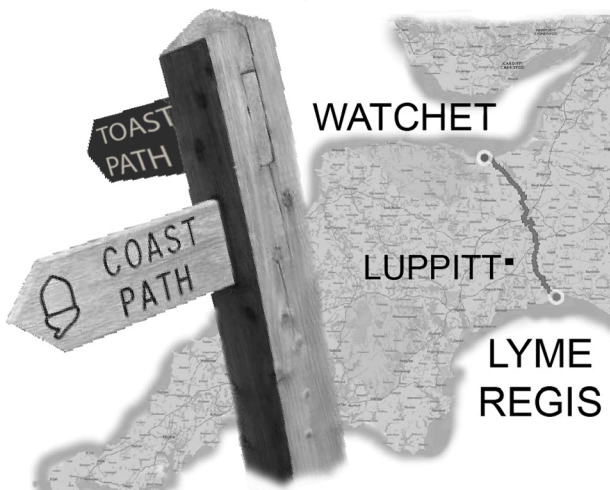
In November last year, amidst the all-consuming struggle against Covid, I remembered that both my husband and our Whippet, Mr. Toast would be celebrating their birthdays within a week of each other. The fast-approaching birthdays would be auspicious in that if one believes one dog year represents seven human years then this year my husband and dog would be the very same age, which surely required something special to mark this once in a lifetime occasion.

A party would be out of the question as indeed the planned extended trip abroad and although both are not 'shy or retiring characters' we were restricted in our celebratory ambitions.

I know, said the husband, "a challenge is required, a long-distance walk, something really tough and demanding, taxing and gruelling". I immediately made a mental note to self "this lightbox inspiration needs careful handling if I am to survive its execution. Must not dampen enthusiasm, trample initiative, or rob husband of his longed-for adventure, but it must stay within Covid restrictions and most importantly my own rules!"

So it was that 'The Toast to Coast' cross county walk originated, Toast conveniently rhyming with coast! It would start from The Cobb at Lyme Regis and finish at the Harbour at Watchet. Spread over four days and using a combination of car, bus, and train we managed to transport ourselves to and from start and finish points thus creating a seamless thread dissecting the land, travelling south to north! It also meant we could enjoy the pleasures of home each evening, hot water, dry clothes, warm bed, good food, a large G&T, all earning a big fat tick!

After pouring over maps, timetables, GPS and existing trails, the husband was ready with his own, personal, and unique walk. There could be no more delay, we were eager for the off, suited, booted, rucksacks and emergency supplies at the ready.



Day 1 Lyme Regis to Axminster (Approx. 8 miles)

A beautiful day of blue skies. Turning our backs to the South we started on our quest for the North heading up the Lim Valley and over Trinity Hill. An easy amble, almost a stroll.

Day 2 Axminster to Bishopswood (Approx. 12 miles)

Smooth, flowing valley terrain with good weather and far-reaching views following the Yarty River up into the Blackdown Hills past Yarcombe. At the finish, the wonderful Candlelight Inn to quench our thirst.

Day 3 Bishopswood to Taunton (Approx. 12 miles)

A long descent from the Blackdown Hills, but very heavy underfoot with thick, sticky, claggy mud everywhere. Arriving in Taunton in twilight a bit bedraggled but cheered by the Christmas lights. Mr. Toast unimpressed with mud caked to his haunches.

Day 4 Taunton to Watchet (Approx. 18 miles)

Hurrah! The last day, but a biggie. Its sensible to leave the worst to last especially when you are tired and grumpy! “Makes you tough and strong. Pain is merely weakness leaving the body” so said the husband.

Early start, marching along deserted lanes by 6.45 a.m., head torches and hi viz for all. What a ‘bright and glowing’ trio we made as we climbed our first summit up to Cothelstone Hill. The Quantocks really showed off today, delivering spectacular views to right and left and the sun broke through at last so our arrival at Watchet Harbour was in warm sunshine.



We had walked over 50 miles and in truth had loved it! Silly sayings such as “no gain without pain” and “motion is lotion” tripped off our tongues as we toasted our achievement with hot chocolate and gravy bones. The promise of a stingingly hot bath and a huge glass of red wine kept us going as we waited for the bus. But, what of our game little dog, he of tender looks and super model frame? Mr Toast took it all in his elegant gait, the perfect companion and that is not just for Lockdown.

Susan Weathrall-King & Jonathan Kellett

IMMUNISATION - A PERSONAL VIEW

Immunisation is underway and I am delighted mine is due any day. Immunisation, along with clean water supplies have arguably been the two greatest benefits to the health of mankind. Sadly, I hear of some who seem resistant to immunisation. Many of us are of a generation when polio, smallpox, scarlet fever and TB were still common, not to mention measles, whooping cough, rubella, typhoid and tetanus. Immunisation, at least in developed nations, has almost completely consigned these diseases to history. We take our freedom from infectious diseases for granted and forget too easily how, until quite recently, these have been a leading cause of death and disability.

Smallpox: The last outbreak of smallpox in the UK (now eradicated worldwide) was only in 1962, imported by a man from Pakistan; the last UK death was of Janet Parker in 1978, a lab worker at the University of Birmingham where smallpox was being researched.

Influenza: In a typical year there are on average about 7,000 excess deaths from influenza and its complications. The pressure which cases of fatal and non-fatal flu place every year on the NHS results in substantial reduction in other forms of routine healthcare such as heart, cancer and orthopaedic operations. Flu vaccination does not give 100% protection, but it does help to keep the numbers down and prevent premature deaths. By comparison, the number of excess deaths recorded in the UK from Covid-19, compared with the last 5 years, from January to September 2020 was 85,000 (ONS).

Anti-vax campaigners feed on a diet of dangerous misinformation fuelled by charlatans like Andrew Wakefield and conspiracy theorists. Not to put too fine a point on it, these people are responsible for deaths and disability in children. For just one example, in 2010, as a result of falls in childhood immunisation caused by 'anti-vaxxers', there was an outbreak of whooping cough in California affecting over 9000 children and ten infants died. "Covid deniers" are equally reprehensible.

Public concerns: Genuine public concerns are often raised through lack of information. One concern is that some vaccines contain thiomersal, a mercury based anti-bacterial preservative. This may be used in multi-dose vials to avoid infection risk. Even so, the amounts of mercury administered are trivial - equivalent to 3 or 4 days of our typical dietary intake of mercury from food and the environment. So not a reason for refusing immunisation. **However, neither the Oxford AstraZeneca nor Pfizer vaccine contain mercury based preservative.**

Another concern is that Covid vaccine development has been rushed and therefore unsafe. This is not true. Both the Pfizer and Oxford vaccines are based on previous long term research work and the Oxford group in particular has worked on Coronaviruses and vaccines for years. Secondly the urgency of the situation has allowed large amounts of funding for all the usual development and safety steps to be done in parallel instead of in sequence - this has cut years off the normal process. The clinical trial process and safety checks have been done in the normal way but at greater scale and efficiency.

PS "GP surgeries are asking - please don't phone the surgery to request vaccination. You will be contacted as soon as it is available"

N. Hurst

GARDEN JOTTINGS

Recently we've been getting Sweet Potatoes from Waitrose and Partners. Where they've been getting them from I don't know. At the moment you can only just about grow them in the UK, and then they really need a poly or a greenhouse. They have to have a longer summer than we get so far north. However I wouldn't be at all surprised if serious efforts aren't being made to breed hardier varieties. So before long they'll be becoming a more familiar vegetable on the dining room table.

Sweet potatoes are also known as batatas, kumara and yams. They are another gift to the world from industrious native American farmers like tomatoes, dahlias (once a food plant), peppers and potatoes. Like potatoes they can be boiled or roasted and eaten with or without their skins. They can even be cut up for chips. Unlike potatoes you can eat the leaves too. Their flesh is less mealy, more like swede. As for sweet potato recipes, myself not being into things culinary, you might like to try the recipe from Mrs Street below.

I listened to an Australian grower on the internet recently, describing how to grow sweet potatoes. He grows his in containers. They should have a rich soil and be kept well watered during their long growing season. This is their main drawback in the UK. A7-7-7 fertiliser seems likely to be suitable. Unlike potatoes, sweet potatoes are not grown from tubers, but from immature shoots, called strips, taken off the parent root stock and planted out in spring. Here in the UK they are also sold as young plants in plugs ready for potting up or planting out. Several varieties are available - beauregard, errato violet, murasaka. Some of these may crop outside in warmer areas of the South East.

Sweet potatoes may be called potatoes, but they do not belong to the same botanical family. Potatoes belong to the deadly nightshade family. Despite naturally containing harmful chemicals, now over centuries carefully bred out, they have become staple diet throughout the world. Sweet potatoes are in the convolvulus group. With further selection and development they may well too become another world wide food.

David Street

CHICKPEA AND SWEET POTATO BAKE.

Ingredients

2 large sweet potatoes, cut into large chunks, skin on.

Oil for cooking; 1 garlic clove;

1 onion, finely chopped

2 handfuls baby spinach;

4 tablespoons tomato paste;

1 400g can cooked chickpeas, drained

Any cheese to taste; Seasoning.

Put sweet potatoes in a pan, cover with boiling water and simmer 8/10 minutes or until soft. Drain well, season and mash until smooth. Heat a little oil in a pan, add garlic and onion. Cook until soft. Add spinach and cook for a few minutes more until the spinach has wilted. Add chickpeas and tomato paste, and stir well. Season. Transfer chickpea mixture to a baking dish

Put the sweet potato mash on top as though you were making a shepherd's pie. Crumble cheese over the top, and bake in the oven until golden.

Oven 200C/400F/gas 6.

Jackie Street

BROADBAND: WHAT'S IT ALL ABOUT?

The world is at our fingertips. Literally. We can now access a previously unimaginable wealth of information from the Internet via broadband. This article aims to explain the basics of broadband.

Broadband transmits data (i.e. words, numbers and pictures) in the form of a digital code – a series of 1s and 0s. The term 'broadband' just means that the connection can transmit a lot of data quickly. To access broadband you need both a physical connection to the internet and an Internet Service Provider.

Physical connections: These can be fixed line or radio connections.

1) Fixed line connections: These are a wired connection to your home either through a copper telephone line or fibre optic cable, or a combination of the two. For a **copper wire** connection, data is sent in the form of electrical pulses. For a **fibre optic** connection, data is sent as pulses of light. BT's network mostly uses a combination - fibre optic cables from the telephone exchange to the local telephone street cabinet, and then copper telephone line to your house. Electrical signals degrade over distance – so if you have slow broadband it could be that the copper line to your home is too long. Fibre optic all the way to your home is best because the light signal does not degrade.

2) Wireless (radio) connections: These include a broadband signal through your mobile phone, via a radio receiver mounted on your home (needs to be in direct line of sight with the radio mast) or via a satellite dish.

Internet Service Providers (ISPs): To get broadband you also need an ISP. This is typically the company we contract with for broadband,

1) For connection via your telephone wire, an ISP needs to use the BT Openreach infrastructure. ISPs which provide broadband services via your telephone line include BT, Sky, Talk Talk, Plusnet (owned by BT), EE and several others. These all use the same copper wire which is owned by Openreach, (a separate BT company). BT is legally required to allow any qualified ISP to sell you a broadband service over its network. Some ISPs bill for their use of Openreach as the line rental charge.

2) For wireless and fibre optic cable right to the home, the ISP provides their own connection. In Luppitt, Voneus (ISP) provides fixed wireless broadband and Gigaclear (ISP) provides fibre optic broadband. For mobile broadband, your mobile operator (EE, Three, O2 or Vodafone) is your ISP.

When choosing an ISP, there are some factors you should think about apart from price and length of contract. These include:

- **Download speed of connection.** This is specified in megabits per second (Mbps). If you are using broadband for web browsing, emails, Netflix, iPlayer and music then a speed of up to 24 Mbps (often called standard broadband) should usually be sufficient. The government deems 10Mbps to be the minimum basic speed we should all have, although some properties aren't there yet. If you want to download large amounts of data or multiple people want to be able to watch films or online TV at the same time then a speed from 24 – 70+ Mbps is more appropriate (often called superfast broadband). Speeds in excess of 100 Mbps are often called ultrafast broadband. If you do a lot of online video gaming then you may need such a connection. Note that advertised speeds are those you should typically receive. During peak hours

speeds may be lower.

- **Upload speed of connection.** Not mentioned in most adverts but typically for broadband over copper lines upload speeds can be a tenth of download speeds. For fibre to the home upload and download speed can be the same. Most of the time low upload speeds won't affect you – but if you have a large collection of, say, photos or videos that you wanted to save to an online location then it might take a long time.
- **Your monthly data allowance.** This is specified in Gigabytes (GB) and is the maximum amount of data you can download per month. Typically videos comprise significantly more data than songs, emails or web pages. If you watch 60 hours of Netflix at standard quality a month then you would use 42GB of data. Many fixed line broadband packages come with unlimited data allowances.
- **Reliability of service.** We frequently find broadband is going slow or there are intermittent failures in your ability to access the Internet. This may be affected by many factors not directly related to the actual broadband connection to your home which is why it can be difficult to diagnose.

Good luck with your broadband.

Phil S.

CHRISTMAS AT ST. MARY'S

Christmas was somewhat different at St. Mary's this year with the Church only open on a Sunday and many preferring not to worship in the building itself.

You may have noticed the arrival of the Nativity on the road by the Church car park. To comply with the then tier 2 restrictions Mary, Joseph, the shepherds, the wise men and the lamb, all arrived in a bubble to await the birth of the baby Jesus on Christmas day.



On the sunny morning of Sunday 20th there was an outside service of lessons and carols. The Church Christmas tree was erected outside the porch and decorated by the congregation. The special dispensation to sing carols outside was fully exercised by the distanced but enthusiastic attendees. The tree was moved inside after the service and prayer requests received at the Nativity service held on 13th December were also hung on the tree.

On Christmas Eve the annual crib service was again held outside with the children invited to lay the knitted nativity figures in the manger.

With thanks to Wendy, Philip, Brian and Pearl for preparing the Church for Christmas and organising the outside services. To Brian and Pearl for building and erecting the nativity stable. To Jean Gardener and Joy Tofts for making the figures for the Nativity.

We wish you all a blessed 2021

THE RECTOR'S LETTER

Sometimes I am just lost for words. As the Rector of our Church of England parishes I spend quite a lot of time preparing sermons and talks to share at Sunday services and other occasions so using words is my bread and butter. But now I am finding it much more challenging. As I write this letter for our magazines, in the middle of the month, the infection rate in the Blackdown Hills has risen by over 366%. I don't know at this point whether the new variant of COVID19 has reached Devon or whether we are just suffering because we were spared to such a degree in the first nine months of the pandemic. What on earth I meant to say.

As a family with school age children living in Upottery we are very fortunate. The schools my children attend are giving them excellent support. My employer is not going to close the 'business'! Over the road The Sidmouth Arms have a pop-up shop for absolute essentials and we are able to take advantage of click and collect shopping from Tesco's. We can exercise safely in a beautiful part of the world. We have been spared COVID (so far). Compared to so many we are incredibly fortunate. So much more so than the elderly living alone, the single parent with pre-schoolers, so much more so than so many others.

At times like this we do have to do exactly what we are asked to do, to keep ourselves and others safe, but there is also so much else that we all can still do, even in our isolation, in lock down.

It is wonderful to know quite how much people are doing despite their isolation – to support neighbours and others further away. A smile sent down the telephone line or through the ether makes a huge difference. It is this aspect of human nature that gives us hope, that 'loving something' that is in every human being (and I do accept that some people have more than others!) It is that 'loving something' that is the servant's heart - that inspires people to be nurses and police, to be carers and teachers, and to be involved in every other aspect of being community, as librarians and shop assistants, and also as being research scientists developing vaccines.

The Bible tells us that God is love and where love is God is. God is the loving something. It is this that gives me hope, and that keeps me hopeful – love is the driving force in the world and so has helped develop the vaccines that will save so many lives in the months ahead.

John Hayhoe johnhayhoe@me.com



Church services are temporarily suspended.

If you are lonely and would like a friendly chat, are facing hardship, or are in need of any kind, we are here to offer help and support. Please do not hesitate to contact our clergy, John Hayhoe or Jane Penn, the Churchwarden, PCC secretary or Administrator. Contact details may be found inside the back cover.

DIAL-IN AND DIGITAL SERVICES DURING FEBRUARY

John and Jane will continue to provide recorded and live services, via Zoom with dial-in, for everyone within the Mission Community. They would love you to join them.

Monday to Friday at 8:30pm: Night Prayer with Jane

Join from 8:15pm onwards for informal chat beforehand.

Dial 0131 460 1196 **OR** 0203 481 5237

Meeting id: 470 394 716# Personal id: # Password: 029755#

Use the meeting id and password to join by Zoom

Sunday Worship at 5pm: Pre-recorded Sunday service with John

Dial 0203 481 5237 **OR** 0131 460 1196

Meeting ID: 871 281 3717# personal ID: #

Use the meeting id to join by Zoom

For dial-in telephone details or more information please contact
Sara on 01404 891140 or visit www.dunkeswell.org.uk
and find us on Facebook @sixworshipstogether

THANK YOU FOR YOUR FINANCIAL SUPPORT

A enormous thank you to everyone who has so generously given financial support to our Parish Church during 2020.

Did you know that we have a separate Fabric fund which is solely used to maintain the Church building and Churchyard? If you would like your one-off or regular donation to be allocated to the Fabric fund then please let the Treasurer know.

With our sincere thanks

Luppitt Parochial Church Council; Treasurer: Sara Gordon, 891140

CLERK'S REPORT OF A VIRTUAL MEETING OF LUPPITT PARISH COUNCIL HELD ON TUESDAY, 1 DECEMBER 2020 AT 8 PM

Present: Cllrs John Thorne (Chairman), Beth Hooper, Brian Pulman, Christine Ryder, Andrew Tucker, Michele Turner, David Key and Colin Brown (EDDC), Iain Chubb (DCC and EDDC), Rosalind Buxton (Parish Clerk) and two members of the public

Receive apologies for absence Apologies were received from Cllr Paul Prettejohn

Minutes of previous meeting The Minutes of the meeting held on Tuesday, 3 November 2020, were unanimously agreed and signed* as a correct record of that meeting (proposed by Cllr Turner and seconded by Cllr Hooper).

Declaration of Interest Cllr Turner declared an interest in planning applications 20/2609/LBC and 20/2610/FUL as she is the applicant.

PLANNING

Applications (for comment, support or objection)

20/2058/MFUL – Otter Falls, Old Spurtham Farm, Upottery, Honiton, EX14 9QD – construction of 12 no glamping pods and 3 no holiday lodges together with associated access, parking, landscaping and drainage works

The clerk had received several telephone calls from residents living near Otter Falls objecting to this planning application. The clerk explained that Luppitt Parish Council had been very aware that, although the property falls within Luppitt parish, any impact from the scheme would be felt by Upottery residents. The clerk assured the callers that the Parish Council had been careful to follow all the correct procedures before reaching a decision. Cllr Key confirmed that he has also received several objections and that Upottery Parish Council has now been included as a consultee.

20/1088/FUL – Old Spurtham Farm, New Road, Upottery – erection of hay storage barn: Cllr Key is continuing to monitor the situation.

Cllr Key advised that he is following up complaints of reversing lorries at night at Spurtham Farm, New Road, which is also within Luppitt parish.

The Buddhist Monastery, Hartridge: The clerk had received a telephone call from one of the Buddhist monks about a future planning application. It was agreed that a site visit was the best option. The clerk will arrange.

20/2609/LBC and 20/2610/FUL – Mount Stephen Farm, Luppitt, Honiton, EX14 4SU – demolition of porch and wc; replacement with single storey extension to include entrance, wc and utility room; creation of doorway and replacement wall

This planning application was received just before the meeting. It was agreed that a visit would be arranged to coincide with the site visit to the Monastery at Hartridge.

The meeting was then suspended to allow Questions from the Public

Neighbourhood Plan Roger Hicks confirmed that the Parish Council has now held three separate briefing meetings to discuss the Neighbourhood Plan. There is just one section left to discuss. The Parish Council will have a final meeting to decide if any amendments are necessary before giving approval to the Plan. Cllr Thorne thanked Roger for explaining each section so clearly.

Interim Devon Carbon Plan: Nigel Hurst wanted to establish whether or not the Parish Council wanted to become involved with the Devon Carbon Plan or whether the Parish Council was negative about it. Cllr Thorne assured Nigel that the Parish Council took climate change very seriously and the clerk confirmed that an expert speaker on climate change had been organised for the Annual Parish Meeting in April. Unfortunately, the meeting had not taken place because of COVID restrictions.

Roger explained that there is a section on Climate Change in the Neighbourhood Plan and Cllr Turner is the team leader on that topic. Nigel mentioned Dr Dan Lash from the University of Exeter who is developing a carbon audit tool which can be used to assess the carbon footprint at parish level. Paragraph 8.5 of the Neighbourhood Plan deals with

the Devon Climate Change Emergency Declaration. Cllr Turner, Roger and Nigel will liaise and share information. Membership of the Blackdown Hills Parish Network will be discussed at the January meeting.

The meeting then resumed.

HIGHWAYS AND TRAFFIC: Parish Highways programme - update on Items to Report: Clerk had taken photos of severe edge of road deterioration from Maple Cross to Pound Farm. Comment received from Highways is that the deterioration does not meet the criteria for safety repair. Potholes from Barn Cross to Beacon do not meet the criteria for repair.

Parish Maintenance

The Mill: Councillors had visited the site to consider the options. Cllr Tucker is concerned that any work carried out should not impact on the mill stream. The Mill owner has confirmed that he does not own the land at the top of the bank. Cllr Tucker has established that it is part of the waste land of Luppitt and, therefore, the Parish Council is responsible for it. It was agreed that any work carried out should maintain the integrity of the mill race. It was agreed that the best option would be for Cllr Tucker to clear out the waste land rather than create a haunch or use piping at the edge of the road. Cllrs Thorne and Tucker will speak to The Mill owner to discuss this plan and establish where the boundary is.

Lengthsman's Duties: The clerk has established that this scheme is no longer in existence. The clerk can apply to the Highways Maintenance Community Enhancement Fund for funding towards the cost of employing a contractor to carry out this work. It was agreed at the November meeting that Cllr Tucker would free gutters and ditches around the parish and he has quoted £2,700 excluding VAT for this work.

Cllr Chubb advised that the Parish Council can apply for funding for a project from the Locality budget. The clerk suggested that the road deterioration between Maple Cross and Pound Farm (which the Parish Council has spent several months trying to get Highways to repair) might be a suitable project. There are also several potholes around the parish that are troublesome but that do not meet the criteria for repair by Highways. Cllrs Thorne and Pulman will make a list of the potholes and give to Cllr Tucker.

Cllr Tucker will provide a quote for the work between Maple Cross and Pound Farm and the work to fill in the potholes. These repairs could be carried out under the Road Warden Scheme with money from the Locality budget.

Salt requirements and Grit Bins: Cllr Tucker has confirmed that there is a sufficient stock of salt. The clerk has reported the grit bins that need filling.

County Councillor's Report: Cllr Chubb had emailed his report to the clerk. The report covered Highways, COVID-19 testing in care homes, mass vaccination programme and the Exeter Nightingale Hospital. The clerk will forward the report to Parish Councillors.

FOOTPATHS AND BRIDLEWAYS

Replacement Footpath Warden: The clerk has heard from three volunteers for the post of Footpath Warden. After discussion, it was agreed that the clerk would approach the volunteers to see if they would be agreeable to sharing the footpaths (proposed by Cllr Ryder, seconded by Cllr Turner).

Cllr Tucker has cleared the overhanging trees at Footpath 14 near Turf House. Cllr Tucker was asked to carry out the necessary work at the boggy area on Footpath 14. Funding has been given for this work.

ENVIRONMENT/COMMUNITY FACILITIES

Children's alternative Christmas Celebrations. Cllr Turner had passed on information from the organisers. The Parish Council agreed to share the cost with the Village Hall Management Committee. Cllr Thorne thanked the organisers on behalf of the Parish Council for their hard work at a very difficult time.

FINANCE AND ADMINISTRATION

Casual Vacancy: The clerk has put an advertisement in the Luppitt Packet.

Projected Budget: The clerk is waiting for the precept letter from EDDC before sending out the projected budget to Parish Councillors.

Commoners page on Parish Council website The clerk will retain the page on the Parish Council website until Cllr Tucker has spoken to one of the trustees.

Correspondence Letters had been received from TRIP and the Royal British Legion thanking the Parish Council for its donations.

CHAIRMAN'S DISCRETION

The resident who has recently moved into Three Horseshoes Barn, Shaugh, telephoned the clerk to say that arrangements have been made for the overhanging tree at The Linhay to be dealt with. On behalf of the Parish Council, the clerk welcomed the resident to the parish. The resident who has set up the Luppitt WhatsApp wondered if there was merit in including some Parish Council information. The resident is happy to discuss with the Parish Council. The clerk will follow up.

QUESTIONS FROM THE PUBLIC

There were no questions and the meeting ended at 9.50 pm.

CLERK'S REPORT OF A VIRTUAL MEETING OF LUPPITT PARISH COUNCIL HELD ON TUESDAY, 5 JANUARY 2021 AT 8 PM

Present: Cllrs John Thorne (Chairman), Beth Hooper, Paul Prettejohn, Brian Pulman, Christine Ryder, Andrew Tucker, Michele Turner, David Key (EDDC), Iain Chubb (DCC and EDDC), Rosalind Buxton (Parish Clerk) and one member of the public

Receive apologies for absence Apologies were received from Cllr Colin Brown (EDDC)

Minutes of previous meeting The Minutes of the meeting held on Tuesday, 1 December 2020, were unanimously agreed and signed* as a correct record of that meeting (proposed by Cllr Ryder and seconded by Cllr Turner).

Declaration of Interest Cllr Turner declared an interest in planning applications 20/2609/LBC and 20/2610/FUL as she is the applicant.

PLANNING

Applications (for comment, support or objection)

20/2609/LBC and 20/2610/FUL – Mount Stephen Farm, Luppitt, Honiton, EX14 4SU – demolition of porch and wc; replacement with single storey extension to include entrance, wc and utility room; creation of doorway and replacement wall

Cllrs Thorne, Pulman, Ryder and the clerk had carried out a site visit. It was unanimously agreed that the Parish Council would support this application.

The meeting was then suspended to allow **Questions from the Public**

20/2651/FUL – Little Shelvin Farm, Luppitt, Honiton, EX14 4UF – construction of replacement porch and single storey side extension Cllrs Thorne, Pulman, Ryder, Turner and the clerk had carried out a site visit. This application replaced an earlier planning application that had been approved by the Parish Council. The applicant answered several questions and explained that the size of the proposed building is considerably smaller than was first applied for. Cllr Thorne had some concerns about the amount of glass in the design and was assured that suitable non-reflective material will be used. There would be a pitched roof this time rather than a flat roof. Cllr Key could see no problem with the application. It was unanimously agreed to support the application.

The meeting then resumed.

20/2622/FUL and 20/2623/LBC – Stoneacre Farm, Luppitt, Honiton, EX14 4SU – construction of oak mullioned and glazed lean-to garden room/plant room extension and 20/2623/LBC – formation of a structural opening to link new oak mullioned and glazed lean-to garden room/plant room extension through the south gable wall of the farmhouse : The plans were shown online. It was unanimously agreed to support the application (proposed by Cllr Tucker, seconded by Cllr Prettejohn).

20/2738/VAR – Dolish Farmhouse, Luppitt, Honiton, EX14 4RT – variation of condition 2 of planning consent 19/2660/FUL: The clerk will send a link to the original planning application (19/2660/FUL) that the Parish Council approved at the February 2020 meeting so that Parish Councillors can consider the proposed variations.

Visit to the Buddhist Monastery at Hartridge Cllrs Thorne, Pulman, Ryder, Turner and the clerk visited the Monastery at Hartridge. The Parish Council will await the planning application.

Neighbourhood Plan The clerk had forwarded the amendments and final decisions that the Parish Council had reached on the draft Plan to Roger Hicks for his attention.

Interim Devon Carbon Plan Cllr Turner has liaised with Nigel Hurst and has registered for a Zoom meeting to discuss a carbon footprint tool that is suitable for use at parish level.

Blackdown Hills Parish Network After discussion, it was agreed not to join at the moment but the decision will be kept under review.

HIGHWAYS AND TRAFFIC

Parish Highways programme - update on Items to Report:

- Loose kerbstones at Millrise – Cllr Key had no further progress to report but hopes to update next month. Cllr Tucker said that the kerbstones are in a dangerous state.
- Cllr Tucker has submitted a quotation for the work from Maple Cross to Pound Farm..
- Uxford Bridge to Stonehayes – Cllr Chubb had spoken to the NHO who reported that the job is booked in to be done before April. They are going to re-profile the road to collect the water from the field and get it back in the ditches. It is being done as part of the DFT funding.

Parish Maintenance

The Mill Cllr Tucker has carried out work at The Mill. He will complete the work once the resident has provided an over-shoot to prevent water running down over the retaining wall of the property.

Lengthsman's Duties The clerk will apply to the Highways Maintenance Community Enhancement Fund for funding towards drainage and gutter clearance in the parish.

Locality Funding: Cllr Chubb gave an indication of the level of funding he could provide from the Locality fund. The clerk will submit an application.

FOOTPATHS AND BRIDLEWAYS

- Bridlepath 25 – 2 equestrian latches requested. The clerk will speak to Ros Davies at DCC. At the third gate, there is a stony river and footpath warden is asking whether a surface with drainage pipe under could be installed here. Cllr Tucker will investigate when he is next in the area.
- Footpath 14 – poor signage. Clerk will apply to Ros Davies for 6 waymarker posts and Cllr Tucker will deal with this.
- Cllr Tucker reported that the boggy area at Footpath 14 has extended and perhaps a different solution is needed. The area is an SSSI which prevents any digging from taking place. The clerk will speak to Ros Davies about the possibility of re-routing the footpath to take it away from the boggy area.

ENVIRONMENT/COMMUNITY FACILITIES

Millrise Cllr Key will find out about the situation regarding heating in the older houses at Millrise and will report back.

FINANCE AND ADMINISTRATION

Approval of projected budget for 2021/22 The projected budget was approved. It was agreed that the clerk would not renew membership to the Society of Local Council Clerks.

Agree precept for 2021/22 It was agreed to set the precept at £12,000 (proposed by Cllr Pulman, seconded by Cllr Ryder).

Correspondence Email from Neil Parish, MP, sending Christmas greetings was noted.

CHAIRMAN'S DISCRETION There were no items.

QUESTIONS FROM THE PUBLIC There were no questions and the meeting ended at 9.45 pm.

***Minutes will be signed when Parish Council meetings resume.**

Connetts Farm

Dunkeswell

ATTENTION GARDENERS!

****NEW IN****

Ornamental bark only £4 per bag (bulk available.)

Mushroom compost, woodchip, topsoil, farmyard manure, horse manure and chicken manure, compost, wood chip mulch all just £2 per bag.

All approximately 25 kilos.

All products are available in bulk by the ton or m3.

- NOW ABLE TO DELIVER IN DUMPY BAGS -

Topsoil and compost is sieved or screened producing a lump free stone free product .

Bulk orders can be mixed

*Example 1/3 topsoil 1/3 manure 1/3 compost
Great for raised beds*

CONTACT US TODAY

Call us

Nick on **07860 459745**

Heather on **07809 870230**

The Farm **01404 891684**

Evenings **01884 841694**

Email us:

connettsfarm@outlook.com

Delivery available at cost.



Ringborough Design and Planning



Helping you design
your dream home

Guillaume Dijon
Ringborough House
Churchinford, Taunton TA3 7EB

Telephone: 01823 421 049
Mobile: 07892 406 096
Email: gdijon@consultant.com

Trees, Woodland & Countryside Management

Woodland & Countryside

Woodland management Garden maintenance

Hedge maintenance / Hedgelaying & Planting

Fruit tree pruning

Tree Work

Felling Crown raising Planting Crown thinning

Technical reductions Pollarding All other tree work

Previous employment: Green Mantle Conservation Contractors National Trust Quantock & Blackdown Hills

Andrew Coleman Environmental Contractors

Phone Rory Proctor: 07966 982845

Email: info@rfptrees.co.uk

Facebook: [rfptreesurgeons](https://www.facebook.com/rfptreesurgeons)

www.rfptreeandlandscapeservices.co.uk



Upottery, Honiton, Devon, EX14 9QT
01404 861705
Charity Number 1157940

Experienced & qualified staff, including 2 Early Years Teachers
Purpose built building * secure outside play area & garden

2-5 year olds

Mon, Tue, Wed, Fri 9am-3.30pm
Thurs 9am-1pm

Parent & Toddler group Thurs 9am-1pm

To find out more or arrange a visit please contact **Abi Few on 01404 861705**
upotterypreschool@outlook.com www.upotterypreschoolcio.weebly.com

Music and Movement or Soft Play Session for Children

Luppitt Village Hall

Wednesdays, term time only

Starts at 9.30am with approximately 45 minutes of singing and dancing

Price is only £1.00 per child, to include a drink and a biscuit,
also coffee or tea for the adults

From babies till school age. **Any enquiries contact Maria 01404 891058**



// It is our belief that a combination of good herd planning, routine monitoring and preventative medicine is the key to success on a modern farm. //



Great value medicines delivered to farm!

mountvets.com

- ✓ 11 Experienced Farm Vets
- ✓ Own Lab For Quick Results
- ✓ Regular Farm Skill Courses
- ✓ Positive Approach To Farm Health Management



Wellington Wiveliscombe Broadhembury

Tel: 01823 662286

LUPPITT INN

Luppitt Inn is now open
on Tuesday, Thursday
and Saturday nights

Opening time 7.30pm

**Otter bitter now
£3 per pint**

**Served by either
Caroline or Phil**

PEACE GARDEN PRODUCE

Fresh fruit and veg

Groceries

Dairy products

Cakes and Pastries made to order

Logs (Net or load)

**On sale daily
at Dove Cottage, Luppitt**

**Deliveries made
Tuesdays and Fridays**

Please order by 3.00pm day before

**Contact John on 07748780096 or
01404 891412**

LOCAL MEAT FOR SALE

Higher Moorlands Farm

*** Grass fed beef & hogget**

*** Free range pork, raised on
British grown peas and barley**

For a price list please email:

HigherMoorlandsFarm@gmail.com

Or phone

Ollie 07527627296

Eve 07807305881

MANOR ANTIQUES

RESTORATIONS

Specialist in Antique Furniture Restoration

Cabinet making, Inlay, Repairs, Veneering

French Polishing, Wood Finishing,

Bespoke Furniture made

CALL IAN WEDERELL

MOBILE 07732549414

OR 01404 891571

30 years in the trade

www.manorantiquesrestorations.co.uk



COLIN LAYZELL
CABINET MAKERS

**Makers of
Furniture, Kitchens
& Interiors**

www.colinlayzell.co.uk

T: 01404 891815

E: colin@colinlayzell.co.uk

Grass Cutting Service

**Garden Hedge Trimming
Strimming, Fencing
Garden Rotovating
Hedgelaying**

**C.F.Tottle
Tel: 01404
891305
Mobile: 0789
0015550**



Stuart's Sweeping Service



Support your local trades – use a local Chimney Sweep

A clean chimney is a safe chimney

Chimney, woodburner and range cooker sweeping.

Power sweeping, Bird's nest removal.

Camera inspections, Cows and bird spikes fitted.

Wood-burners, multi-fuel stoves and liners installed.



07432 118318 or 01404 831288

Evening and weekend appointments available



Member of The Guild of Master Sweepers.
HETAS Approved Chimney Sweep.
HETAS Registered Installer.





Finding the best beer in town
doesn't take a lot of investigating



OTTER BREWERY
www.otterbrewery.com



Highfield Stores & Post Office

Tel: 01404 891015

The village store offering so much more:

Situated in the Highfield Estate, Dunkeswell, we have a huge range of groceries, fresh meat, fruit & veg, newspapers and much, much more!



Our post office provides most services (excluding car tax).

You can deposit cash and cheques into almost every bank. 7 DAYS A WEEK !!

Why not avoid the queues in the high street and enjoy a browse in our spacious, well-stocked and friendly PREMIER shop with plenty of free parking and fantastic monthly offers!!

**SHOP & POST OFFICE OPENING HOURS:
MONDAY-SATURDAY 7AM-9PM
SUNDAY 8AM-8PM**

Unit 5 Culme Way, Dunkeswell, Honiton, EX14 4JP
Email: highfieldstores14@gmail.com



SPARKLES

CLEANING • SERVICES

For a friendly, personal service

- Weekly / fortnightly cleans
- Spring cleans
- Deep cleans • House moves

Please call Tracy for an informal chat

Phone: 01404 891505

Mobile: 07720 321 413

tracy@sparkleshoniton.co.uk
www.sparkleshoniton.co.uk



Insured • DBS/CRB Checked • References

- Window Cleaner
- High reach hot water system
- Frames and doors all in
- Gutters/Facias Cleaned
- Patios
- Solar Panels

Excellent references if required
For that personal service contact :

Sean Harris
Telephone: 01404 814963
Mobile: 07737 419077



Plumbing & Heating

Southwoods Farm
Ashill
Cullompton
Devon
EX15 3NS

Phone: 01884 841130
Mobile: 07860 441510

No call out charge

- All aspects of plumbing & heating
- Boiler, Aga & Rayburn servicing
- Gas, Oil, LPG & Solid Fuel
- Bathroom installations
- Gas Landlord Safety Certificates
- Under floor heating specialists
- Free estimates
- All work guaranteed

Contact Neil Thomas



Reg. 025221C



Reg. C4016



Reg. 215088



Reg. 4629



www.njtplumbingandheating.co.uk



THE YORK INN

Honiton Road, Churchinford. TA3 7RF
01823 601 333

Country Pub offering a warm welcome.

Log Fire. Extensive choice of Ales including local
brews,

Games Room, Large screen TV. Monthly Meat Draw.

Good wholesome food using local ingredients to eat
in or takeaway. Specials board & Homemade Pie
Board.

Sunday Roasts. Saturday Breakfast.



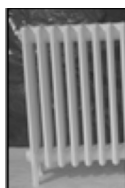
Parties catered for
Patio Area
Dogs Welcome



Email: theyorkinn@yahoo.com

Need to rejuvenate old metal objects?

We provide a variety of services ranging from powder coating to hot zinc spray and shot blasting. We keep a range of about 100 colours in stock. Most are exterior polyesters, which provide excellent durability and colour retention on gates, railings and garden furniture.



Industrial Coating Supplies

Phone 01884 34506

Opening Hours Monday - Thursday 8 am - 5 pm or Friday 7 am - 1 pm

email coatingsupplies@aol.com www.industrialcoatingsupplies.co.uk

Units 1 + 2 Simmons Place, Kingsmill Industrial Estate, Cullompton EX15 1BH

CUSTOM WOODWORKING, CARPENTRY & JOINERY

TRADITIONAL AND
CAD/CNC DESIGN AND
CONSTRUCTION.

YOUR DESIRES IN WOOD
REALISED.

FROM BOOKSHELVES TO
BOOKCASES. FROM WINDOWS
TO WARDROBES AND FROM
TRINKET BOXES TO BESPOKE
FURNITURE.

WHEN THE JOB REQUIRES JUST
THAT LITTLE BIT OF EXTRA
CARE AND ATTENTION CALL:-

PETE WHITE
01404 892869

**TO ADVERTISE
IN THIS SPACE
PLEASE CONTACT**

Luppittpacket@gmail.com

JOB VACANCIES

RED DOORS FARM

GILL AND TIM HUNT

**WOULD LIKE TO EMPLOY LOCAL CLEANERS FOR OUR
5* HOLIDAY COTTAGES**



£11.00 PER HOUR

COME AND JOIN OUR SMALL AND FRIENDLY TEAM

FRIDAYS AND/OR MONDAYS 10.00AM TO 2.15PM

PLEASE CALL GILL HUNT ON 01404 890067

OR email info@reddoors.co.uk



Beacon, Luppitt, Honiton, Devon EX14 4TX



+44 (0)1404 890067

www.reddoors.co.uk



KEITH FARMER **KFBS LTD**
BUILDING SERVICES LTD

**ARCHITECTURAL DESIGN
PROJECT MANAGEMENT
PLANNING & DEVELOPMENT
BUILDING CONTRACTORS**



• RESIDENTIAL & DOMESTIC PROPERTIES • LISTED & AT RISK BUILDINGS
• HOSPITALITY & LICENCED PREMISES • COUNTRY HOUSES & HOTELS
• AGRICULTURAL/EQUESTRIAN • INDUSTRIAL & COMMERCIAL

**FROM INITIAL CONCEPT THROUGH TO FINAL COMPLETION
FREE INITIAL ADVICE AND ESTIMATE**

01823 666 223



CIOB



RICS

info@keithfarmer.co.uk



Your friendly, local Small Animal Veterinary Practice

Honiton

62 New Street
EX14 1BZ
01404 42750

Hemyock

Unit 1c Station Rd Ind Est
EX15 3SE
01823 681067

www.newstreetvets.co.uk

Consultation by appointment only

★ 24 hour Emergency service available ★



Proud members of
Checkatrade.com
where reputation matters



★ **Trustpilot**



Everything
**Plumbing
& Heating**

Email: info@synergisw.co.uk Website: synergisw.co.uk

- | | |
|---------------------------|-----------------------------|
| ✓ New Boilers | ✓ Plumbing |
| ✓ Heating Systems | ✓ Heating Care Plans |
| ✓ Boiler Servicing | ✓ Boiler Repairs |

24 Hour Availability
Call: 01404 234 363



THE SIDMOUTH ARMS UPOTTERY

OPEN ALL DAY



Great Drinks!

Great Food!

Great Choice!

Extensive daytime and evening menus using locally sourced ingredients, freshly prepared and cooked on the premises
Food available from 12noon until 9pm weekdays (8pm Sundays)
Book early for our ever-popular Sunday Roast (12 until 5)

Function Room Available

For your meeting, training day
or group presentation.

Equipped with audio-visual facilities
including a hi-def projector and
large drop-down screen.

Outside Functions Catered For

For your wedding or other special
event, we can supply full catering
and bar facilities to suit your
requirements. Any number of
people catered for.

Upottery, Honiton, Devon. EX14 9PN Telephone 01404861252

www.sidmoutharms.com

sidmoutharms@gmail.com



Sidmouth Arms

Paul Prettejohn

Garden Machinery & Groundcare



Email: paul.prettejohn@btopenworld.com

www.paulprettejohn.co.uk

Honiton: 01404 890257

Wellington: 01823 662656



NEW PRODUCTS



USED PRODUCTS



REPAIRS



SERVICING



COLLECTION & DELIVERY



CUSTOMISATION

*Professional Gardeners
& Landscapers*



Goodlife
GARDENERS &
LANDSCAPERS

Grass cutting, hedge trimming,
tree surgery and planting.
Garden waste removal service.
Regular gardening undertaken
throughout the year.

.....
WE OFFER A FRIENDLY AND
RELIABLE SERVICE

.....
PROFESSIONAL HARD AND SOFT
LANDSCAPING TEAM FROM
DESIGN TO COMPLETION ALSO
AVAILABLE

.....
Phone Rob or Shelley on 01404 881756 or mobile 07866 672150

www.goodlifegardeners.co.uk

Est. over 75years.

DELVE electrical

Approved engineers and contractors.

Free estimates

Domestic, Agricultural & Industrial Installations & Maintenance,
Economy 7 Heating, Spares & Repairs, Motors & Generators.

For all your electrical needs - large or small.

Unit 1, Devonshire Way, Heathpark, Honiton. EX14 1YF.

Tel: 01404 42958

Email: info@delveelectrical.co.uk

Website: www.delveelectrical.co.uk



ASHCULME

TREE WORK | LANDSCAPING | FENCING | PAVING | MAINTENANCE



TREE WORK - ALL ASPECTS OF TREE WORK INCLUDING: REMOVAL, CROWNING & LIFTING

STUMP GRINDING - TOTAL REMOVAL OF ANY SIZED TREE STUMP

LANDSCAPING - ALL PROJECTS UNDERTAKEN

FENCING - NEW INSTALLATIONS OR REPAIRS TO EXISTING FENCES

TURFING - PREPARATION & LAYING OF YOUR NEW LAWN

PAVING - REPAIRS TO EXISTING PAVING OR COMPLETELY NEW INSTALLATIONS

GARDEN MAINTENANCE - HEDGE & SHRUB TRIMMING, FRUIT TREE PRUNING & MORE

FOR A FREE QUOTE FROM YOUR FRIENDLY, RELIABLE & ESTABLISHED LOCAL FIRM:

**CONTACT
PAUL DURMAN**

01823 353302

EMERGENCY 24/7-

07815 146343

www.ashculmetreesurgeons.co.uk
info@ashculmetreesurgeons.co.uk

DIRECTORY

Parish Council	www.luppittparishcouncil.co.uk	
Chairman	John Thorne	01404 891412 07748 780096
Clerk	Rosalind Buxton	01404 861565 07944 625025
Village Hall		
Chair	Stephen Smith	01404 892839
Secretary	Mary Hill	01404 891160
Bookings	Jean Hooper	01404 892969
Commoners' Secretary	Kevin Lockyer	07827 309229
Luppitt Neighbourhood Plan	www.luppittneighbourhood.org.uk	
Chair	Roger Hicks	01404 891579
Consultation	Christine Ryder	01404 892880
Luppitt Wives	Mrs Joan Beckett	01404 891308
Rector	Rev John Hayhoe johnhayhoe@me.com	01404 515083 07864 048575
Associate Priest	Jane Penn	01404 841523
PCC Secretary	Sue Lauzier-Piechowiak	01404 891924
Church Administrator	Sara Gordon admin@dunkeswell.org.uk	07717 222404
Church Wardens	Brian Pulman	01404 891324
Luppitt Entertainments Cttee	Pat Bussey	01404 892720
Captain of Bellringers	Pearl Pulman	01404 891324
Cricket Club	Steve Berry	01404 891268
Hartridge Buddhist Monastery		01404 891251
Surgeries	Blackdown Dunkeswell Honiton Medical Centre Honiton Minor Injuries Unit	01823 681720 01404 548544 01404 540540
Devon Air Ambulance		01392 466666
East Devon District Council		01404 515616
TRIP (community transport)		01404 46529
Citizens Advice Bureau		0344 411 1444

Location of defibrillators

Village Hall EX14 4RT
Loman's Farm, EX14 4TX (near Red Doors)



Weddings

♥ NOW TAKING BOOKINGS FOR 2022 ♥

Set in 45 acres of gloriously secluded parkland and gardens, Lakeview Manor is the most beautiful location for your big day. For the wedding you always dreamed of, we've everything here for you.

CEREMONY AND WEDDING BREAKFAST

Exclusive use of the grounds and venue for up to 60 people

EVENING RECEPTION

Up to 100 people

ACCOMMODATION

Honeymoon suite plus 14 bedrooms for you and your guests

DEDICATED WEDDING COORDINATOR

There for you every step of the way

If you've fallen in love with Lakeview Manor, then let us make your wedding dreams come true...

